

STRIPING LEGEND

- BS** Left-Facing Bike Lane Stencil-to be high skid thermoplastic. See detail TM503.
- TWL** Install Two-way Left Turn Lane. See detail TM500.
- LA** Install Left Turn Arrow. See detail TM501.
- S** Stop Bar (1 ft. White Bar). See detail TM503, TM530.
- CW-SC** Staggered Continental Crosswalk. 2' Wide Bars. See detail TM503, TM530.
- CH-BS** Install Chevron Bars. Buffer Space 8" Wide Bars at 20' Spacing. See detail TM504.
- STOP** Install STOP legend. See detail Sheet ST-7.

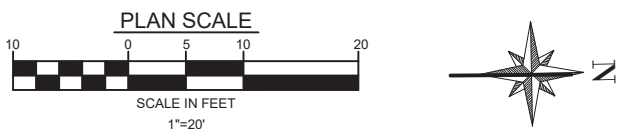
- RX Y** Remove Existing Yellow Stripe.
- RX W** Remove Existing White Lane Striping.
- RX RSA** Remove Existing Straight-Turn Arrow.
- RX CW** Remove Existing Crosswalk Striping.
- RX S** Remove Existing Sign and Post. Return to City.
- RX LA** Remove Existing Left Turn Arrow.
- RX TWL** Remove Existing Two-Way Left Turn Lane Striping.

SIGNING LEGEND

- NEW TRAFFIC PATTERN AHEAD W23-2** Place "NEW TRAFFIC PATTERN AHEAD" W23-2 Sign. 36"x36" diamond shape warning sign with florescent orange background with black letters, mounted on temporary sign support. See detail TM 821. Sign to be placed a minimum of 250 feet ahead of new stop bar.

NOTES

- 1** Stop Sign to be installed by the City of Coquille.
- 2** Temporary W23-2 signange to be installed by the City of Coquille
- 3** Yellow Two Way Left Turn Lane striping to be placed over existing striping between 4th Street and 6th Street. Except as noted.



HGEARCHITECTS.

333 S. 4TH STREET
COOS BAY, OR 97420
P: 541.269.1166
www.hge1.com
general@hge1.com

SANDOWENGINEERING

160 MADISON STREET
SUITE A
EUGENE OREGON 97402

REGISTERED PROFESSIONAL
ENGINEER
77929PE
KELLY R. SANDOW
RENEWAL 06/30/26

PROJECT NO.:

CITY OF COQUILLE URA
CENTRAL BOULEVARD STRIPING

CITY OF COQUILLE
COQUILLE, OREGON

DESIGN DEVEL.

REVISIONS:
DATE DESCRIPTION

DATE:

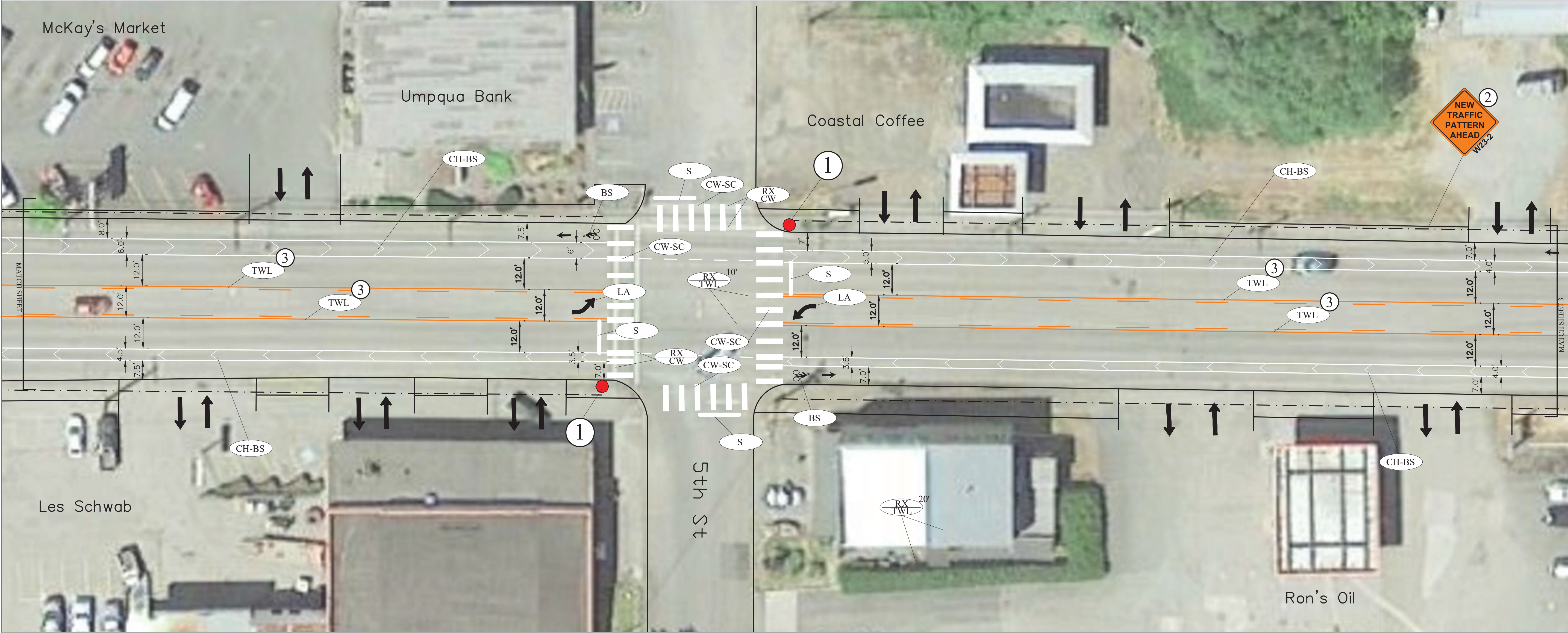
July 2025

SHEET TITLE:

Roadway
Striping

ST-1

Copyright © 2025
HGE ARCHITECTS, INC.



STRIPING LEGEND

- BS Left-Facing Bike Lane Stencil-to be high skid thermoplastic. See detail TM503.
- TWL Install Two-way Left Turn Lane. See detail TM500.
- LA Install Left Turn Arrow. See detail TM501.
- S Stop Bar (1 ft. White Bar). See detail TM503, TM530.
- CW-SC Staggered Continental Crosswalk. 2' Wide Bars. See detail TM503, TM530.
- CH-BS Install Chevron Bars. Buffer Space 8" Wide Bars at 26' Spacing. See detail TM504.

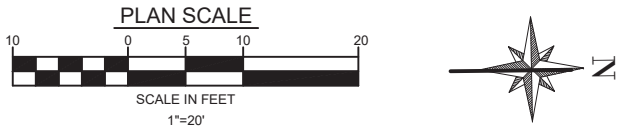
- Remove Existing Crosswalk Striping.
- Remove Existing Two-Way Left Turn Lane Striping.

SIGNING LEGEND

- Place "NEW TRAFFIC PATTERN AHEAD" W23-2 Sign. 36"x36" diamond shape warning sign with florescent orange background with black letters, mounted on temporary sign support. See detail TM 821. Sign to be placed a minimum of 250 feet ahead of new stop bar.

NOTES

- 1 Stop Sign to be installed by the City of Coquille.
- 2 Temporary W23-2 signange to be installed by the City of Coquille
- 3 Yellow Two Way Left Turn Lane striping to be placed over existing striping between 4th Street and 6th Street. Except as noted.



HGEARCHITECTS,LLC

333 S. 4TH STREET
COOS BAY, OR 97420
P: 541.269.1166
www.hge1.com
general@hge1.com

SANDOWENGINEERING

160 MADISON STREET
SUITE A
EUGENE OREGON 97402

REGISTERED PROFESSIONAL
ENGINEER
77929PE
KELLY R. SANDOW
RENEWAL 06/30/26

PROJECT NO.:

CITY OF COQUILLE URA
CENTRAL BOULEVARD STRIPING

CITY OF COQUILLE
COQUILLE, OREGON

DESIGN DEVEL.

REVISIONS:
DATE DESCRIPTION

DATE:

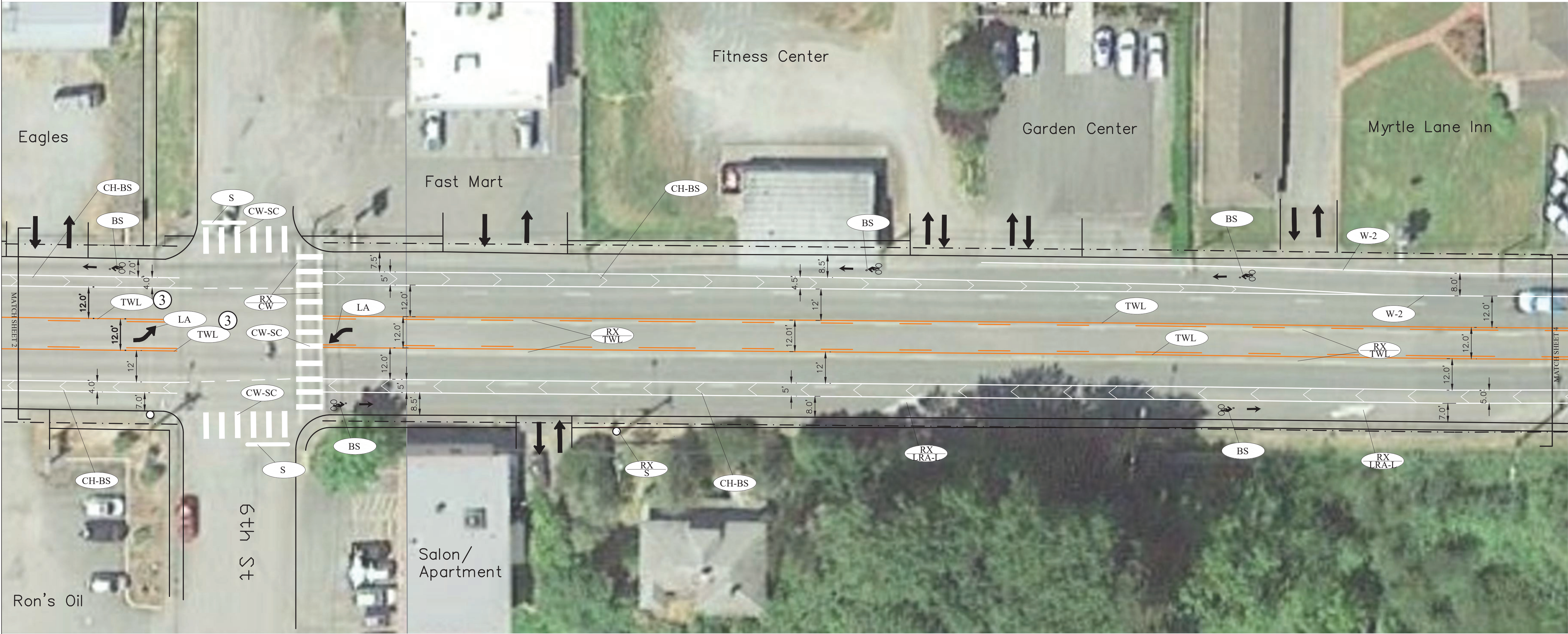
July 2025

SHEET TITLE:

Roadway
Striping

ST-2

Copyright © 2025
HGE ARCHITECTS, LLC



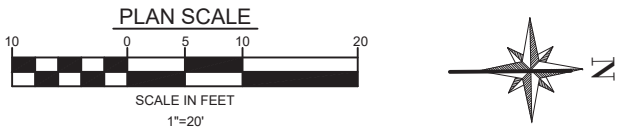
STRIPING LEGEND

- BS** Left-Facing Bike Lane Stencil-to be high skid thermoplastic. See detail TM503.
- W-2** 8 in. White Line. See detail TM500.
- TWL** Install Two-way Left Turn Lane. See detail TM500.
- LA** Install Left Turn Arrow. See detail TM501.
- S** Stop Bar (1 ft. White Bar). See detail TM503, TM530.
- CW-SC** Staggered Continental Crosswalk. 2' Wide Bars. See detail TM503, TM530.
- CH-BS** Install Chevron Bars. Buffer Space 8" Wide Bars at 26' Spacing. See detail TM504.

- RX CW** Remove Existing Crosswalk Striping.
- RX S** Remove Existing Sign and Post. Return to City.
- RX LRA-T** Remove Existing Lane Reduction Arrow.
- RX TWL** Remove Existing Two-Way Left Turn Lane Striping.

NOTES

- 3** Yellow Two Way Left Turn Lane striping to be placed over existing striping between 4th Street and 6th Street. Except as noted.



HGEARCHITECTS.

333 S. 4TH STREET
COOS BAY, OR 97420
P: 541.269.1166
www.hge1.com
general@hge1.com

SANDOWENGINEERING

160 MADISON STREET
SUITE A
EUGENE OREGON 97402

REGISTERED PROFESSIONAL
ENGINEER
77929PE
KELLY R. SANDOW
RENEWAL 06/30/26

PROJECT NO.:
CITY OF COQUILLE URA
CENTRAL BOULEVARD STRIPING

CITY OF COQUILLE
COQUILLE, OREGON

DESIGN DEVEL.

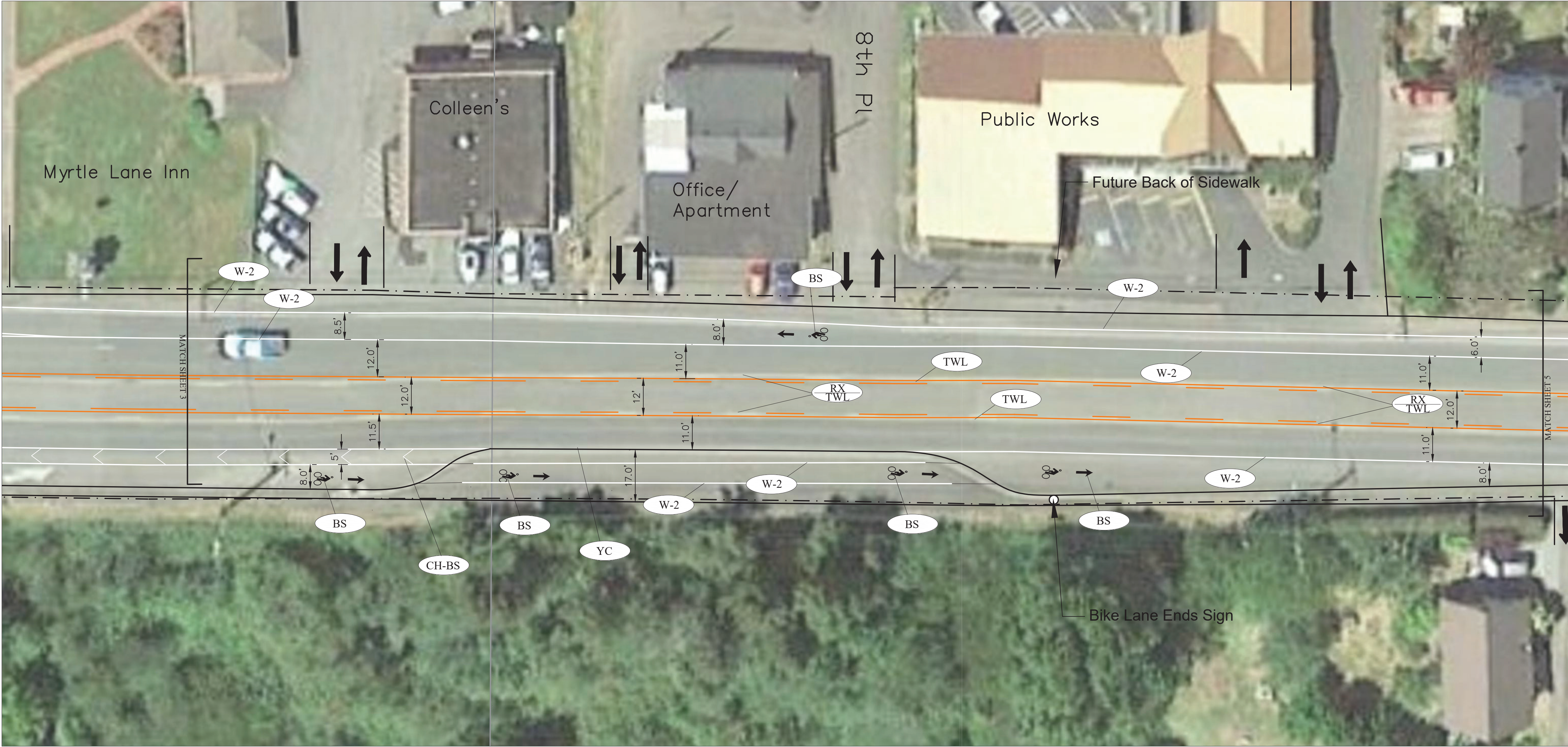
REVISIONS:
DATE DESCRIPTION

DATE: July 2025

SHEET TITLE:
Roadway
Striping

ST-3

Copyright © 2025
HGE ARCHITECTS, INC.



STRIPING LEGEND

- BS

Left-Facing Bike Lane Stencil-to be high skid thermoplastic. See detail TM503.
- TWL

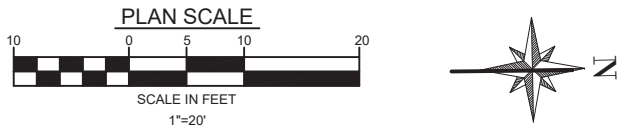
Install Two-way Left Turn Lane. See detail TM500.
- CH-BS

Install Chevron Bars. Buffer Space 8" Wide Bars at 26' Spacing. See detail TM504.
- W-2

8 in. White Line. See detail TM500.
- YC

Yellow curb
- RX TWL

Remove Existing Two-Way Left Turn Lane Striping.



HGEARCHITECTS, INC.

333 S. 4TH STREET
COOS BAY, OR 97420
P: 541.269.1166
www.hge1.com
general@hge1.com

SANDOWENGINEERING

160 MADISON STREET
SUITE A
EUGENE OREGON 97402

REGISTERED PROFESSIONAL ENGINEER
77929PE
JAN. 4, 2011
OREGON
KELLY R. SANDOW
RENEWAL 06/30/26

PROJECT NO.:
CITY OF COQUILLE URA
CENTRAL BOULEVARD STRIPING
CITY OF COQUILLE
COQUILLE, OREGON

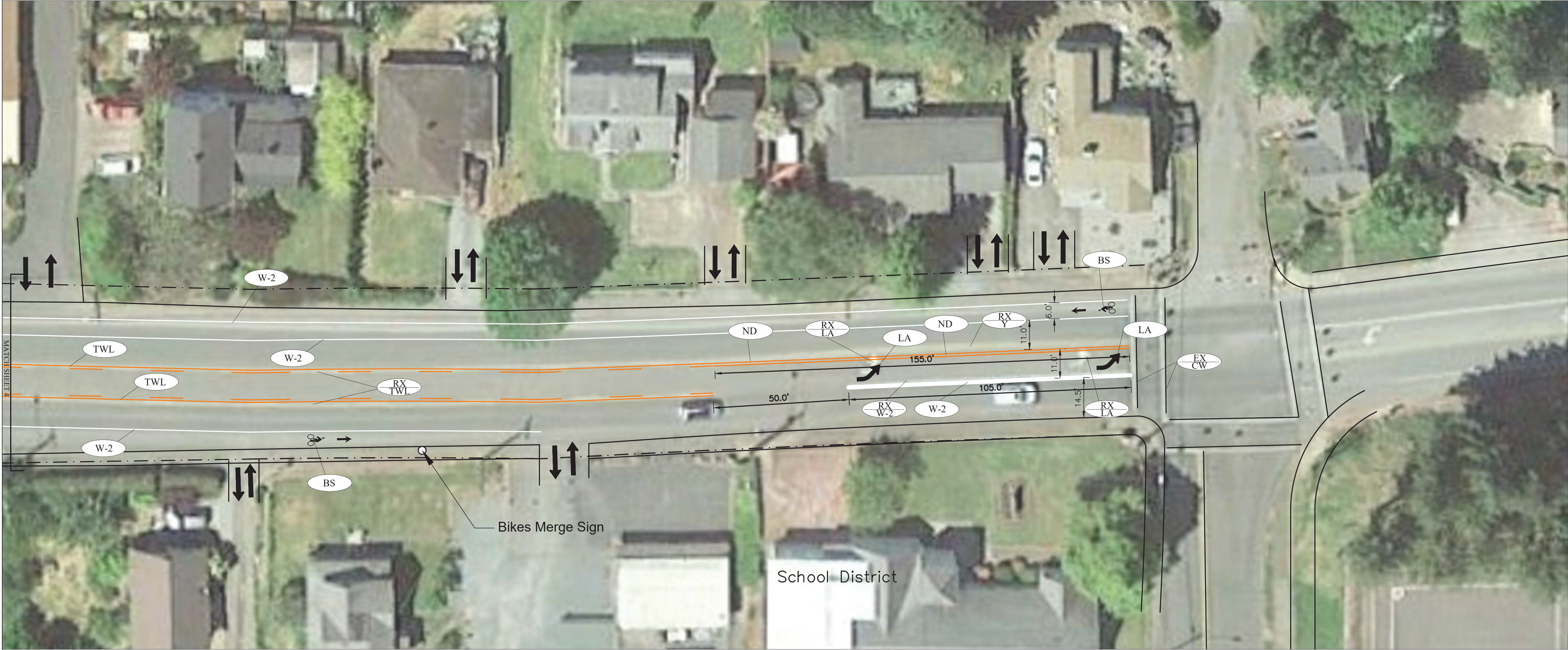
DESIGN LEVEL.

REVISIONS:
DATE DESCRIPTION

DATE: July 2025
SHEET TITLE:
Roadway Striping

ST-4

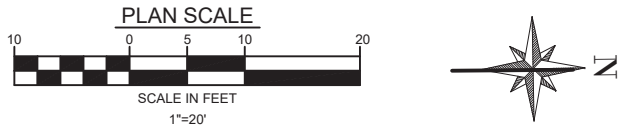
Copyright © 2025
HGE ARCHITECTS, INC.

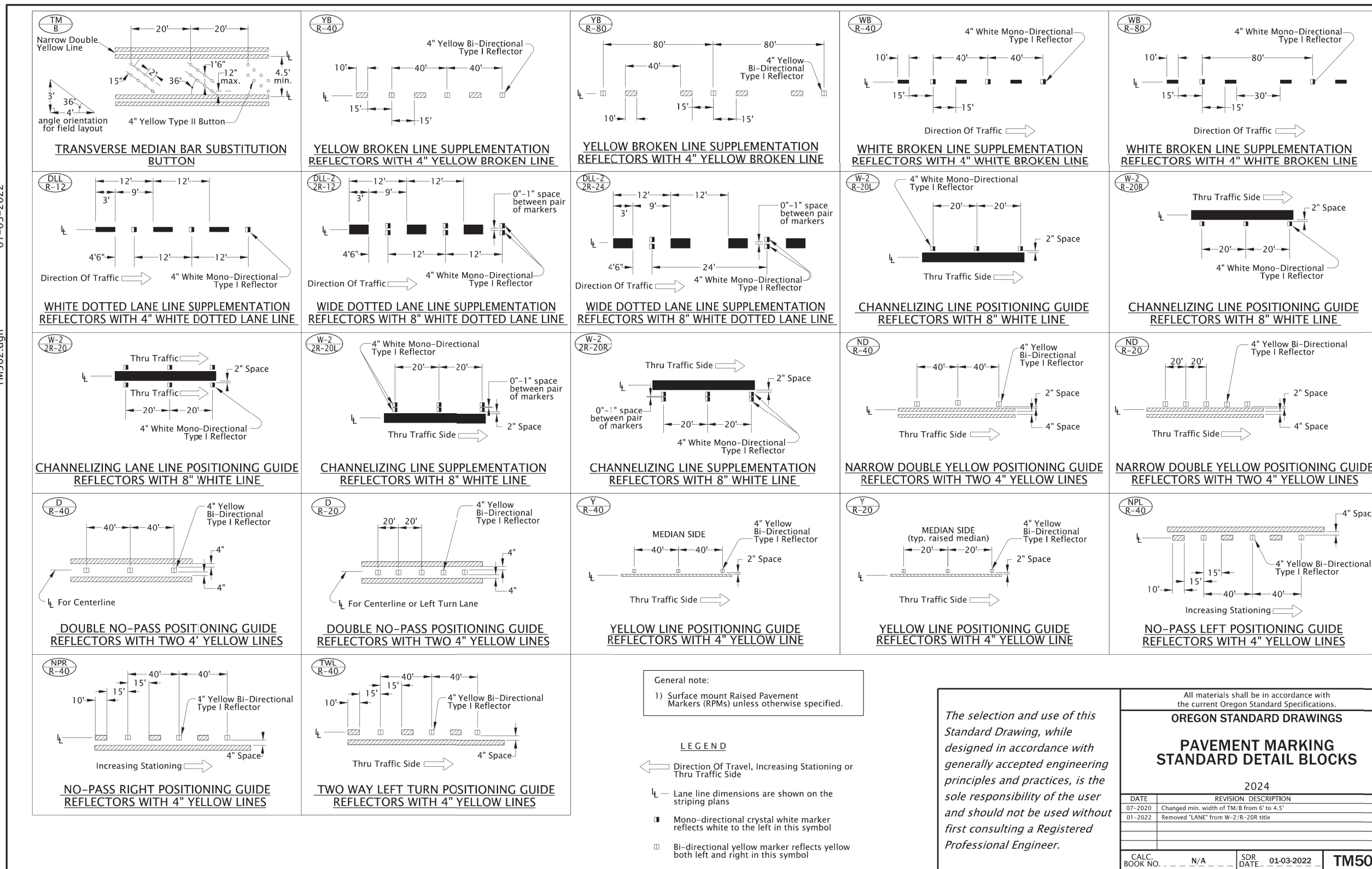
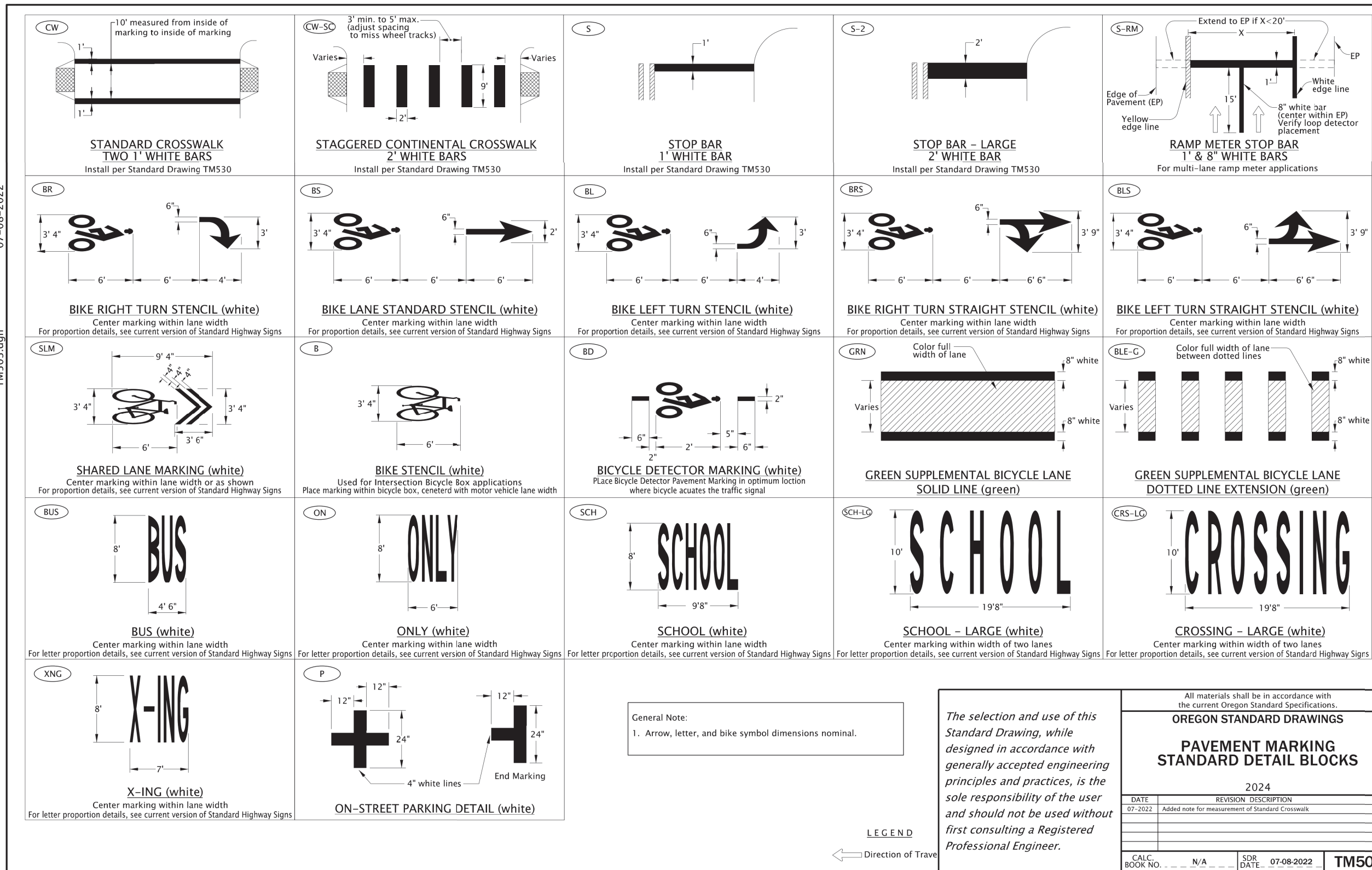
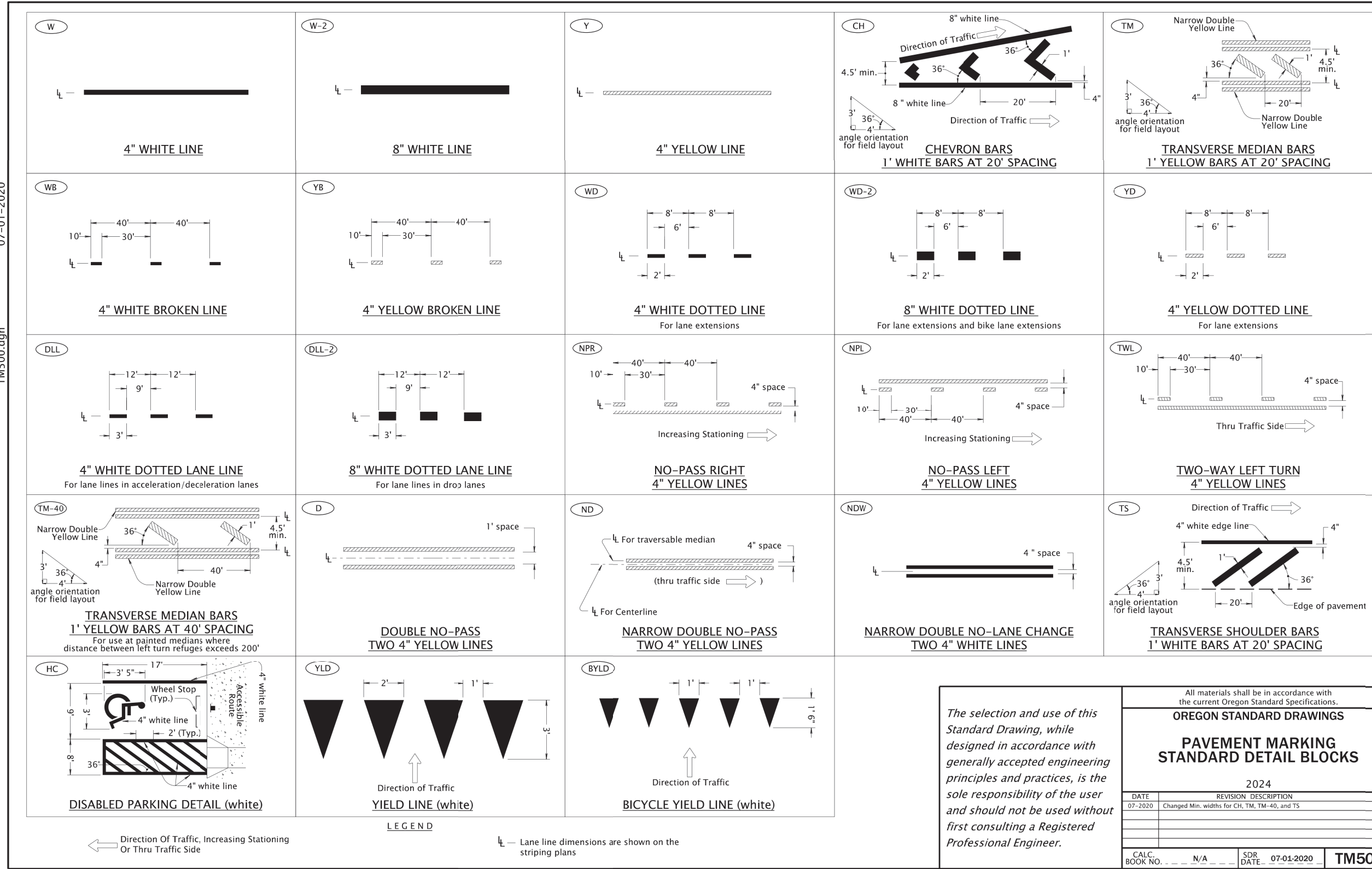
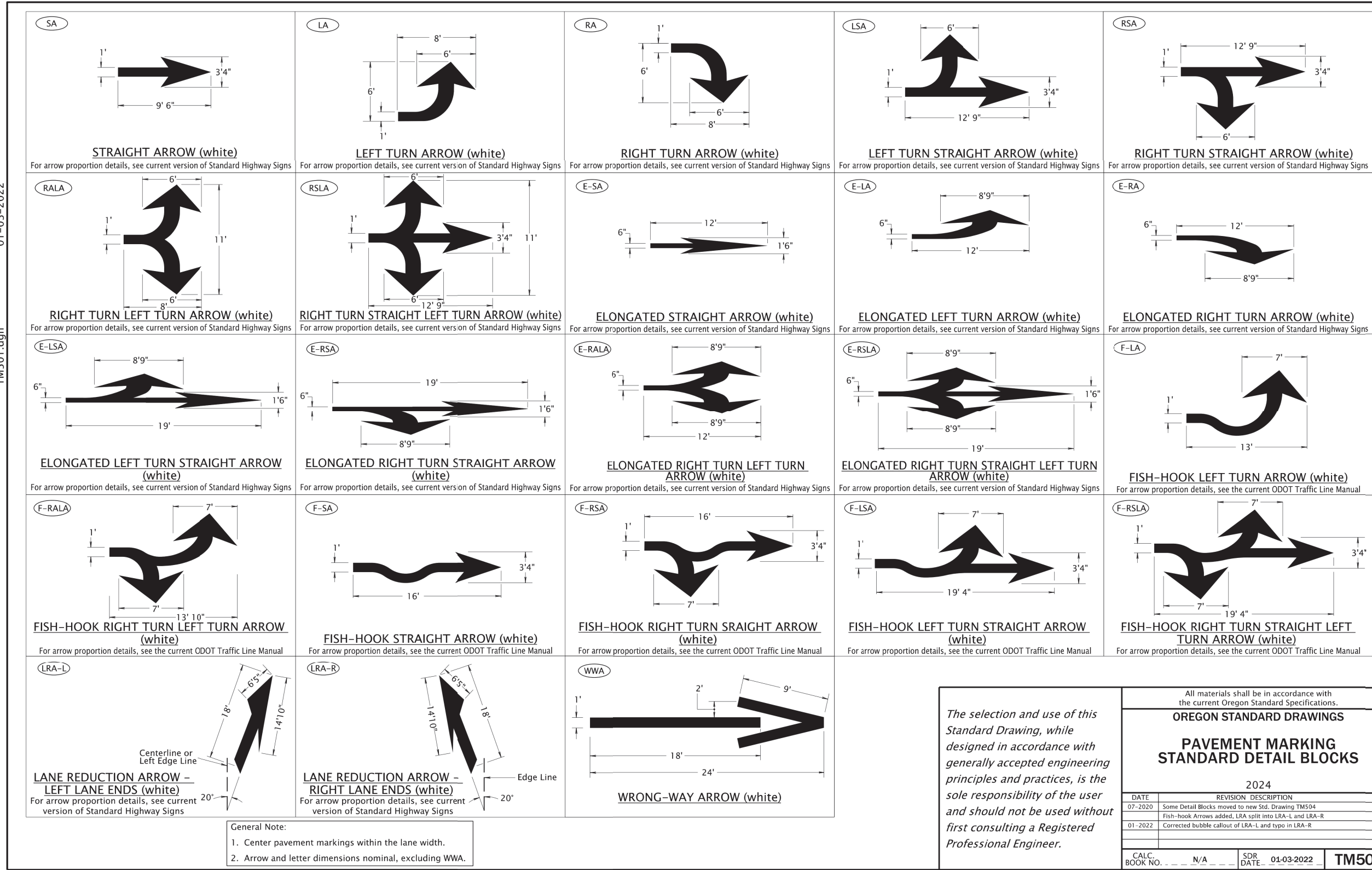


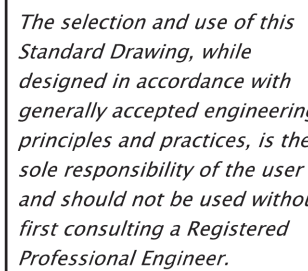
STRIPING LEGEND

- BS Left-Facing Bike Lane Stencil-to be high skid thermoplastic. See detail TM503.
- TWL Install Two-way Left Turn Lane. See detail TM500.
- LA Install Left Turn Arrow. See detail TM501.
- W-2 8 in. White Line. See detail TM 500.
- ND Install Narrow Double No-Pass two 4" yellow lines. See detail TM 500.
- EX CW Existing Crosswalk Striping to Remain.

- RX Y Remove Existing Two-Way Left Turn Lane Striping.
- RX W-2 Remove 8in White Line
- RX LA Remove Existing Left Turn Arrow.
- RX TWL Remove Existing Two-Way Left Turn Lane Striping.







Effective Date: June 1, 2025 – November 30, 2025

All materials shall be in accordance with
the current Oregon Standard Specifications.

OREGON STANDARD DRAWINGS

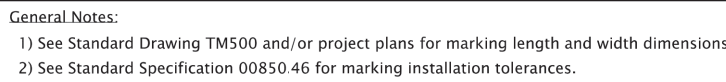
PAVEMENT MARKING STANDARD DETAIL BLOCKS

2024

DATE	REVISION DESCRIPTION
07-2020	New Drawing for additional Detail Blocks

CALC.
BOOK NO. N/A
S&P DATE
07-01-2020
TM504

Effective Date: June 1, 2025 – November 30, 2025



The selection and use of this Standard Drawing, while designed in accordance with generally accepted engineering principles and practices, is the sole responsibility of the user and should not be used without first consulting a Registered Professional Engineer.

Pavement Marking Material Type	Thickness
Durable Method 'A' & Method 'B' & Method 'D'	120 mils
High Performance	25 mils

SURFACE INSTALLED MARKINGS

All materials shall be in accordance with the current Oregon Standard Specifications.

OREGON STANDARD DRAWINGS

DURABLE & HIGH PERFORMANCE

PAVEMENT MARKINGS

SURFACE & GROOVE INSTALLED

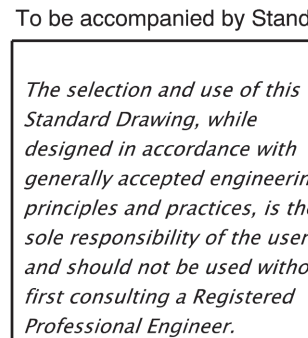
NON-PROFILED

2024

REVISION DESCRIPTION	
DATE	DESCRIPTION
07-2021	Changed groove width for 4 in. markings
01-2022	Changed groove width back to previous width for 4 in. markings

CALC NO.	N/A	SQR DATE	20-20-2023	TM521
----------	-----	----------	------------	-------

Effective Date: June 1, 2025 – November 30, 2025



Effective Date: December 1, 2024 – May 31, 2025

All materials shall be in accordance with the current Oregon Standard Specifications.

OREGON STANDARD DRAWINGS

INTERSECTION PAVEMENT MARKINGS (CROSSWALK, STOP BAR & BIKE LANE STENCIL)

2024

DATE	REVISION DESCRIPTION
07-2022	Added Roadway Standard Drawing reference to detail for clarity

CALC. BOOK NO.	N/A	SDR DATE	06-JUL-2022	TM530
----------------	-----	----------	-------------	-------



STOP (white)
Center marking within lane width
For letter proportion details, see current version of Standard Highway Signs

