

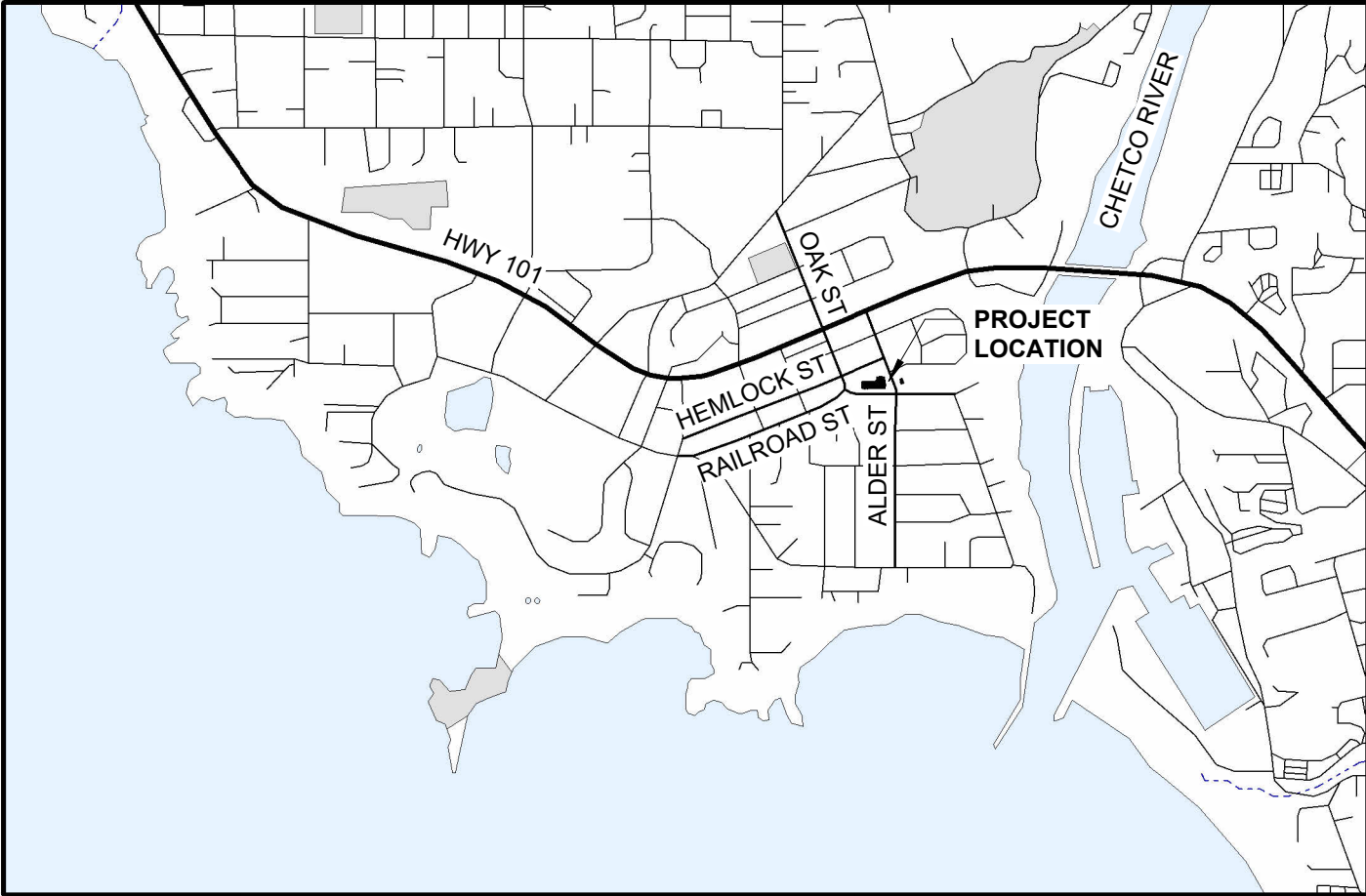
CHETCO COMMUNITY PUBLIC LIBRARY INTERIOR IMPROVEMENTS

405 ALDER ST, BROOKINGS, OR 97415

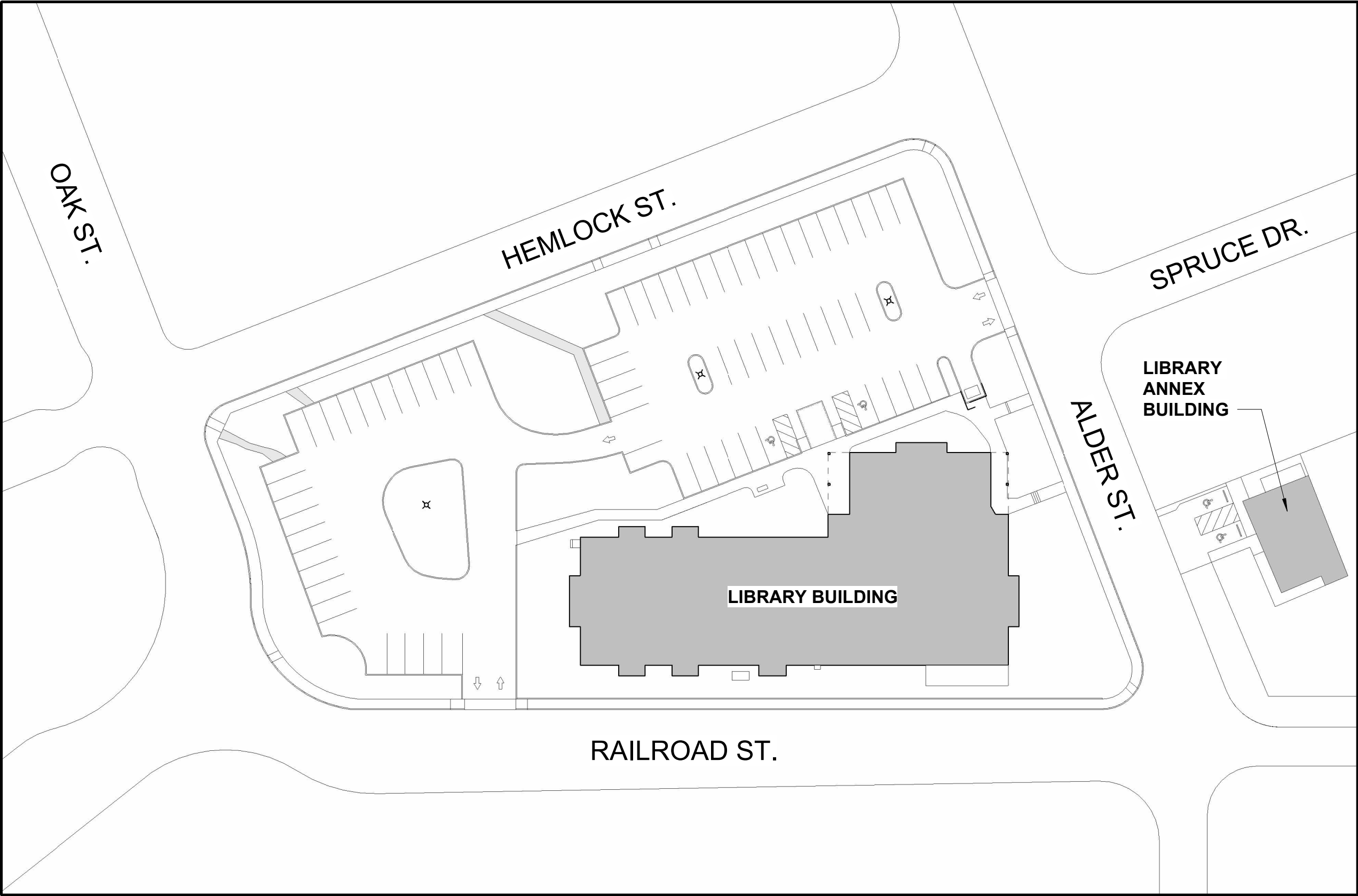
PROJECT DESCRIPTION:
WORK ON THIS PROJECT INCLUDES INSTALLATION OF ALUMINUM-FRAMED GLASS INFILL WALL WITH WOOD DOOR AT EXISTING LIBRARY MAKERSPACE ROOM AND WORK RELATED TO ACCESS CONTROL, INSTALLED BY SEPARATE VENDOR, AT SEVERAL DOORS IN THE LIBRARY AND SEPARATE LIBRARY ANNEX. INCLUDING OPENING UP WALLS FOR ELECTRICAL ROUGH-IN, GYPSUM WALL BOARD REPLACEMENT, REPLACING LIBRARY ENTRY STOREFRONT DOORS, AND OTHER DOOR AND FRAME MODIFICATIONS. ALTERNATE BID WORK INCLUDES REPLACEMENT OF TWO (2) EXISTING COMPRESSOR-OPERATED DOOR MOTORS WITH ELECTRIC MOTORS.

SHEET INDEX

- ARCHITECTURAL
- A-001 COVER SHEET
 - A-201 LIBRARY FLOOR PLAN & DOOR SCHEDULE
 - A-202 ANNEX FLOOR PLAN & DOOR SCHEDULE
 - A-301 SECTION, ELEVATIONS, & DIAGRAMS
 - A-501 DETAILS



1 VICINITY MAP
1" = 50'-0"



2 SITE PLAN
1" = 50'-0"

HGE
ARCHITECTS, INC.

333 S. 4TH STREET
COOS BAY, OR 97420
P: 541.269.1166
general@hge1.com
www.hge1.com

REGISTERED ARCHITECT
2840
JOSEPH A. SLACK
COOS BAY, OREGON
STATE OF OREGON

PROJECT NO.: 23.88.1
CHETCO COMMUNITY PUBLIC LIBRARY
INTERIOR IMPROVEMENTS
405 ALDER ST.
BROOKINGS, OREGON

CONSTRUCTION

REVISIONS:
DATE DESCRIPTION

DATE: JULY 2025

SHEET TITLE:
COVER SHEET

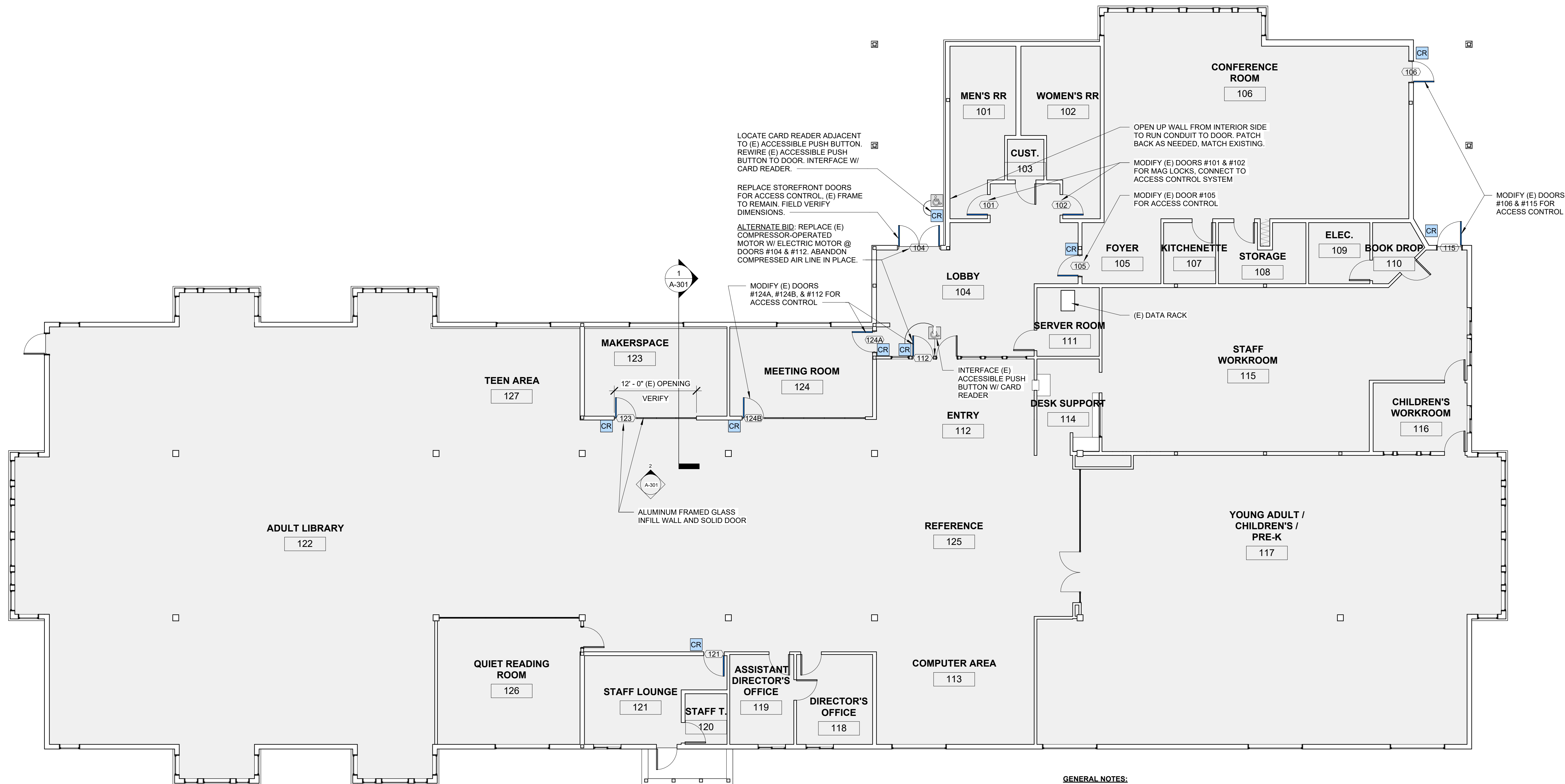
A-001

Copyright © 2025
HGE ARCHITECTS, INC.

DOOR SCHEDULE							
DOOR NO.	ROOM NAME	SIZE (WxH)	TYPE	DOOR MATERIAL	FRAME MATERIAL	HARDWARE GROUP	NOTES
101	MEN'S RR	3' - 0" X 6' - 8"	(E)	(E) WOOD	(E) HOLLOW METAL	HW-53-E	MAG LOCK, CONNECT TO ACCESS CONTROL SYSTEM
102	WOMEN'S RR	3' - 0" X 6' - 8"	(E)	(E) WOOD	(E) HOLLOW METAL	HW-53-E	MAG LOCK, CONNECT TO ACCESS CONTROL SYSTEM
104	LOBBY	6' - 0" X 6' - 8"	FULL GLASS	ALUMINUM / GLASS	(E) ALUMINUM	HW-50	EXTERIOR DOUBLE STOREFRONT DOOR; NOTES: 3, 4; VERIFY (E) SIZE; OPEN UP WALL AS REQUIRED, PATCH BACK.
105	FOYER	3' - 0" X 6' - 8"	(E)	(E) WOOD / GLASS	(E) HOLLOW METAL	HW-50-E	NOTES: 1, 3
106	CONFERENCE ROOM	3' - 0" X 6' - 8"	(E)	(E) HOLLOW METAL / GLASS	(E) HOLLOW METAL	HW-50-E	EXTERIOR DOOR; NOTES: 1, 3
112	ENTRY	3' - 0" X 6' - 8"	(E)	(E) WOOD / GLASS	(E) HOLLOW METAL	HW-50-E	NOTES: 1, 3, 4
115	STAFF WORKROOM	3' - 6" X 6' - 8"	(E)	(E) HOLLOW METAL / GLASS	(E) HOLLOW METAL	HW-50-E	EXTERIOR DOOR; NOTES: 1, 3
121	STAFF LOUNGE	3' - 0" X 6' - 8"	(E)	(E) WOOD	(E) HOLLOW METAL	HW-52-E	NOTES: 1, 2
123	MAKERSPACE	3' - 0" X 7' - 10"	FLUSH	WOOD	ALUMINUM	HW-52	NOTES: 2; VERIFY HEIGHT
124A	MEETING ROOM	3' - 0" X 6' - 8"	(E)	(E) WOOD	(E) WOOD	HW-52-E	NOTES: 1, 2
124B	MEETING ROOM	3' - 0" X 7' - 10"	(E)	(E) WOOD	(E) ALUMINUM	HW-52-E	NOTES: 1, 2

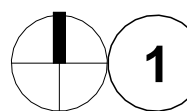
DOOR SCHEDULE NOTES:

- EXISTING DOOR TO REMAIN, MODIFY AS REQUIRED FOR ACCESS CONTROL.
- MODIFY DOOR FRAME FOR ELECTRIC STRIKE FOR ACCESS CONTROL. SEE DETAIL 4/A-301.
- CONCEAL WIRING TO MOTORIZED PANIC DEVICE FOR ACCESS CONTROL. SEE DETAIL 3/A-301.
- INTERFACE CARD READER WITH EXISTING ACCESSIBLE PUSH BUTTON. REWIRE TO DOOR AS NEEDED.



GENERAL NOTES:

- ALL CONDUIT TO BE CONCEALED IN-WALL. SURFACE MOUNTED CONDUIT IS NOT PERMITTED. OPEN UP WALL AS NEEDED AND PATCH BACK TO MATCH, TYPICAL.
- IF DOOR IS IN ROOM WITH NO CEILING, LOCATE POWER SUPPLY IN ADJACENT ROOM WITH CEILING.
- ACCESS CONTROL BY SEPARATE VENDOR. CONTRACTOR TO PROVIDE ROUGH-IN & DOOR MODIFICATIONS ONLY.



FLOOR PLAN - LIBRARY

CONSTRUCTION

REVISIONS:
DATE DESCRIPTION

DATE: JULY 2025

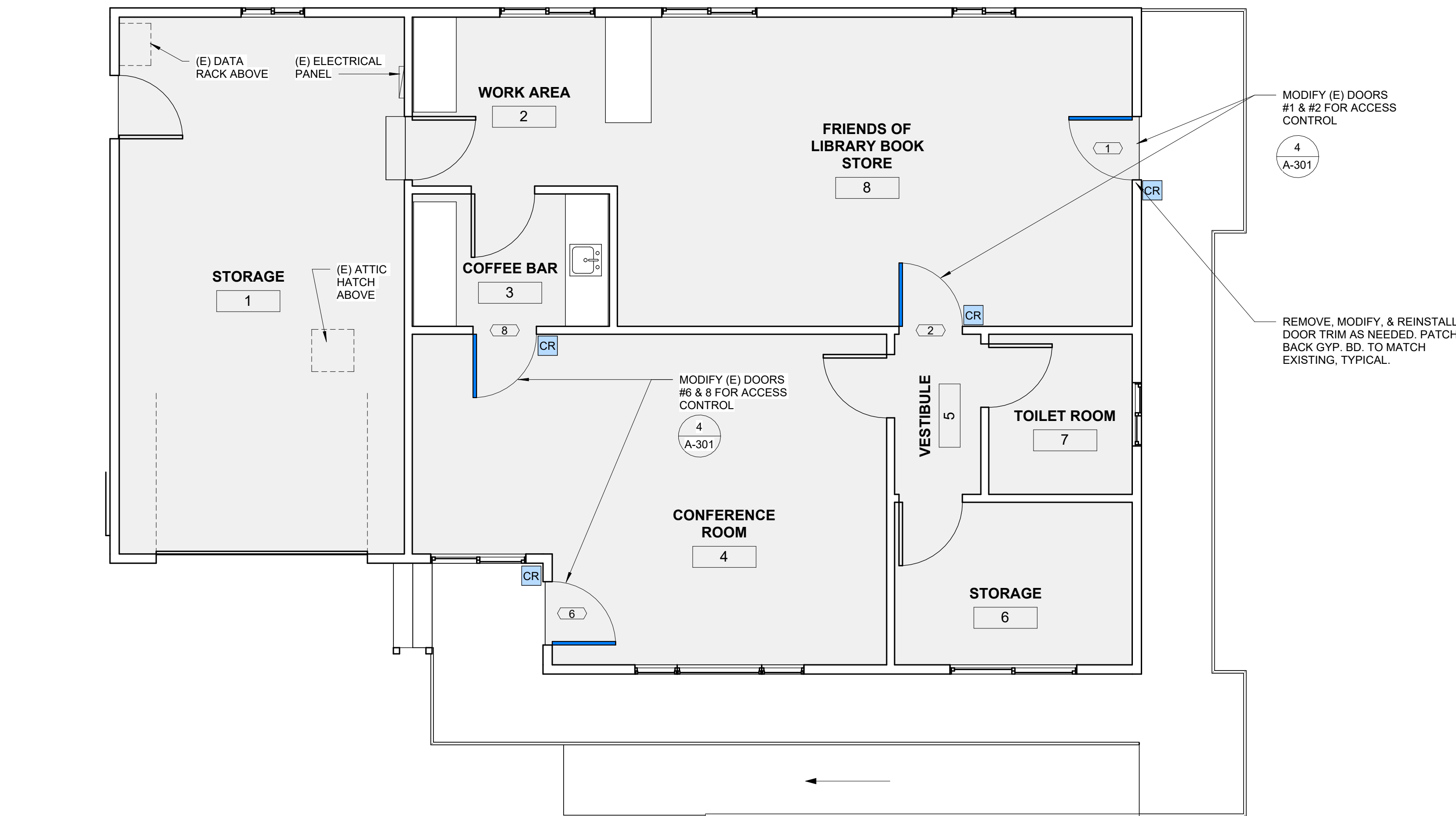
SHEET TITLE:
ANNEX FLOOR PLAN
& DOOR SCHEDULE

A-202

DOOR SCHEDULE - ANNEX							
DOOR NO.	ROOM NAME	SIZE (WxH)	TYPE	DOOR MATERIAL	FRAME MATERIAL	HARDWARE GROUP	NOTES
1	FRIENDS OF LIBRARY BOOK STORE	3' - 0" X 6' - 8"	(E)	(E) FIBERGLASS / GLASS	(E) WOOD	HW-52-E	EXTERIOR DOOR; NOTES: 1, 2
2	VESTIBULE	3' - 0" X 6' - 8"	(E)	(E) WOOD / GLASS	(E) WOOD	HW-52-E	NOTES: 1, 2
6	CONFERENCE ROOM	3' - 0" X 6' - 8"	(E)	(E) FIBERGLASS / GLASS	(E) WOOD	HW-52-E	EXTERIOR DOOR; NOTES: 1, 2
8	COFFEE BAR	3' - 0" X 6' - 8"	(E)	(E) WOOD	(E) WOOD	HW-52-E	NOTES: 1, 2

DOOR SCHEDULE NOTES:

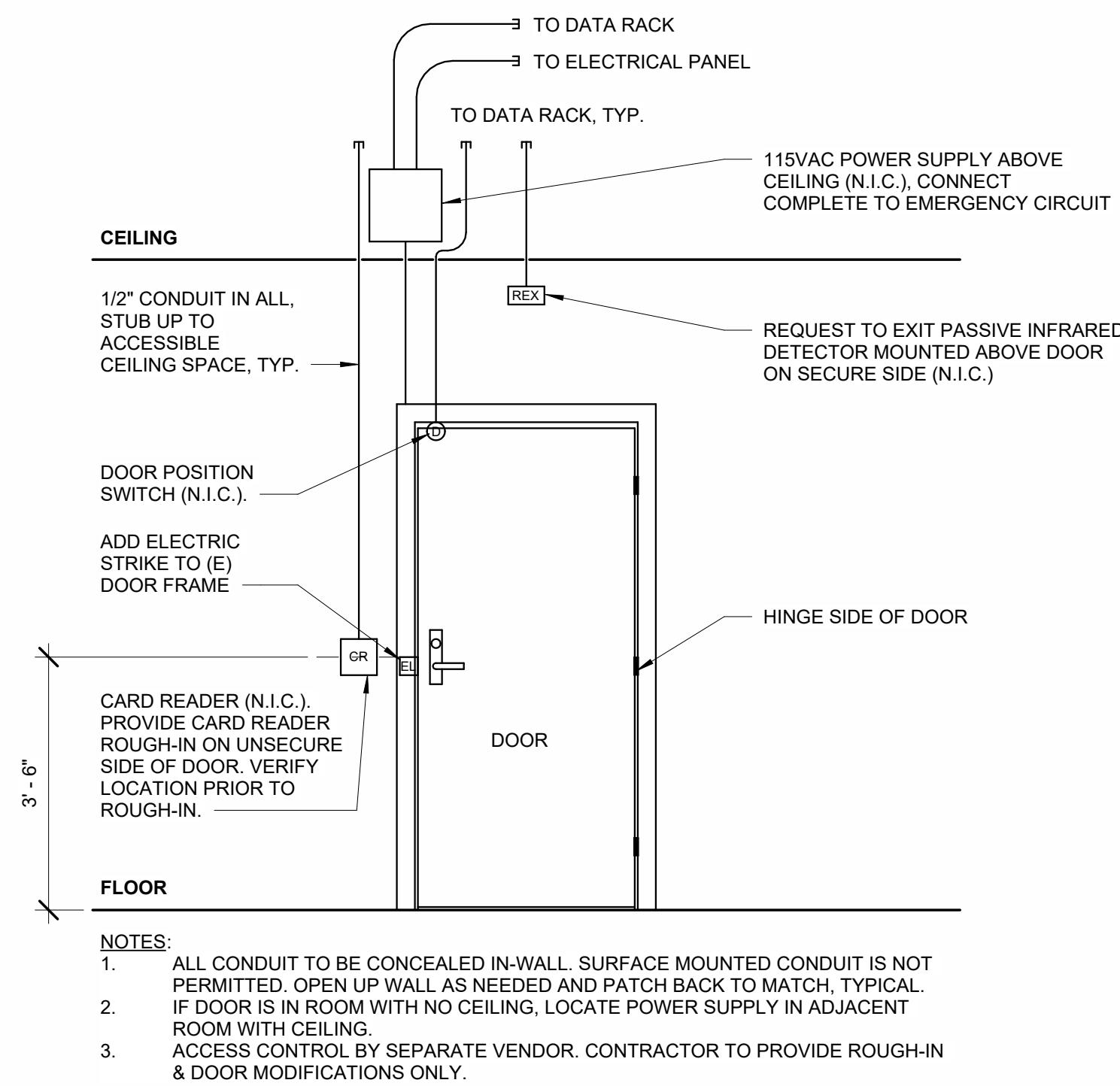
- EXISTING DOOR TO REMAIN. MODIFY AS REQUIRED FOR ACCESS CONTROL.
- MODIFY DOOR FRAME FOR ELECTRIC STRIKE FOR ACCESS CONTROL. SEE DETAIL 4/A-301.
- CONCEAL WIRING TO MOTORIZED PANIC DEVICE FOR ACCESS CONTROL. SEE DETAIL 3/A-301.



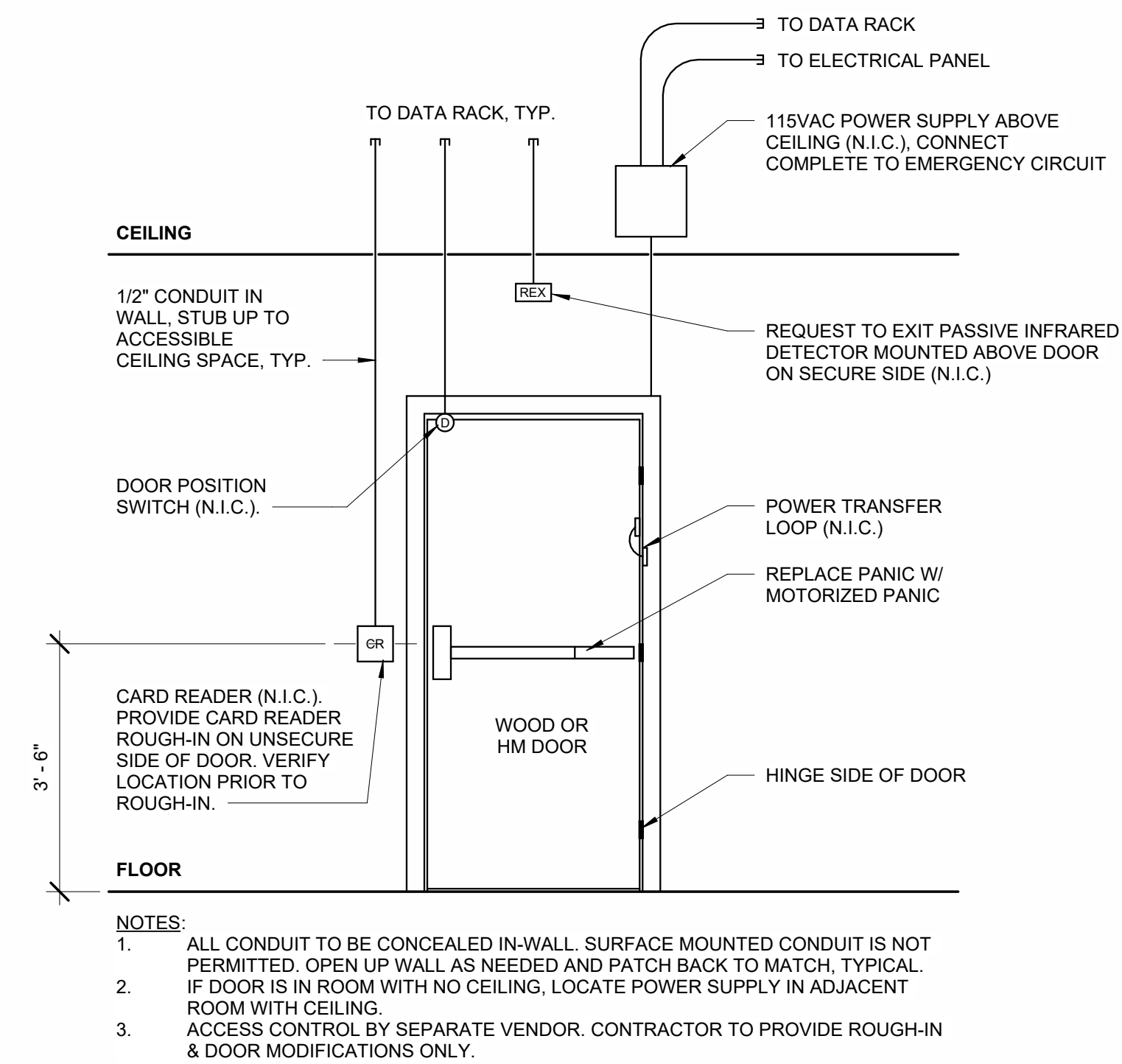
GENERAL NOTES:

- ALL CONDUIT TO BE CONCEALED IN-WALL. SURFACE MOUNTED CONDUIT IS NOT PERMITTED. OPEN UP WALL AS NEEDED AND PATCH BACK TO MATCH, TYPICAL.
- IF DOOR IS IN ROOM WITH NO CEILING, LOCATE POWER SUPPLY IN ADJACENT ROOM WITH CEILING.
- ACCESS CONTROL BY SEPARATE VENDOR. CONTRACTOR TO PROVIDE ROUGH-IN & DOOR MODIFICATIONS ONLY.

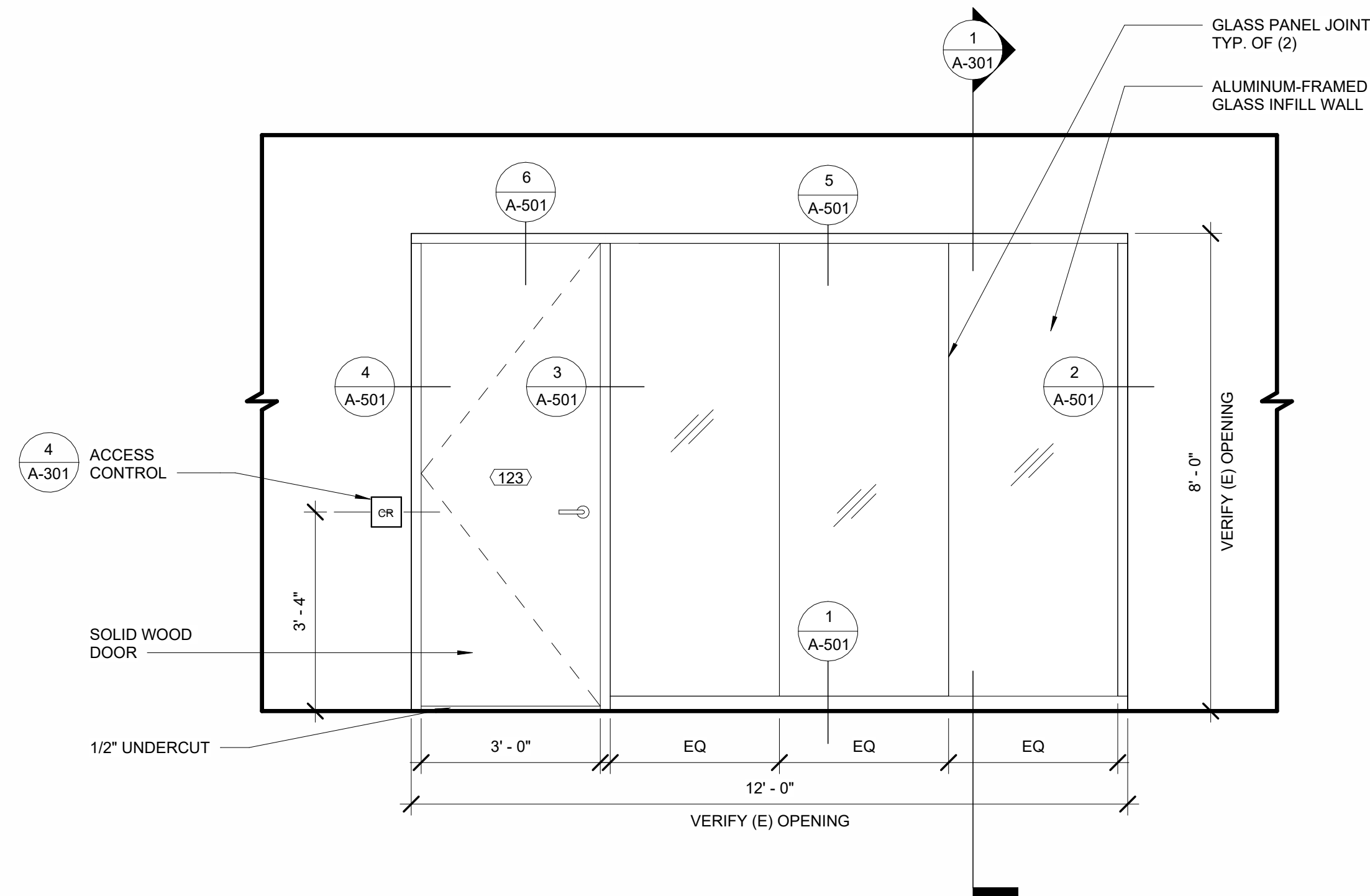
1 FLOOR PLAN - ANNEX BUILDING
1/4" = 1'-0"



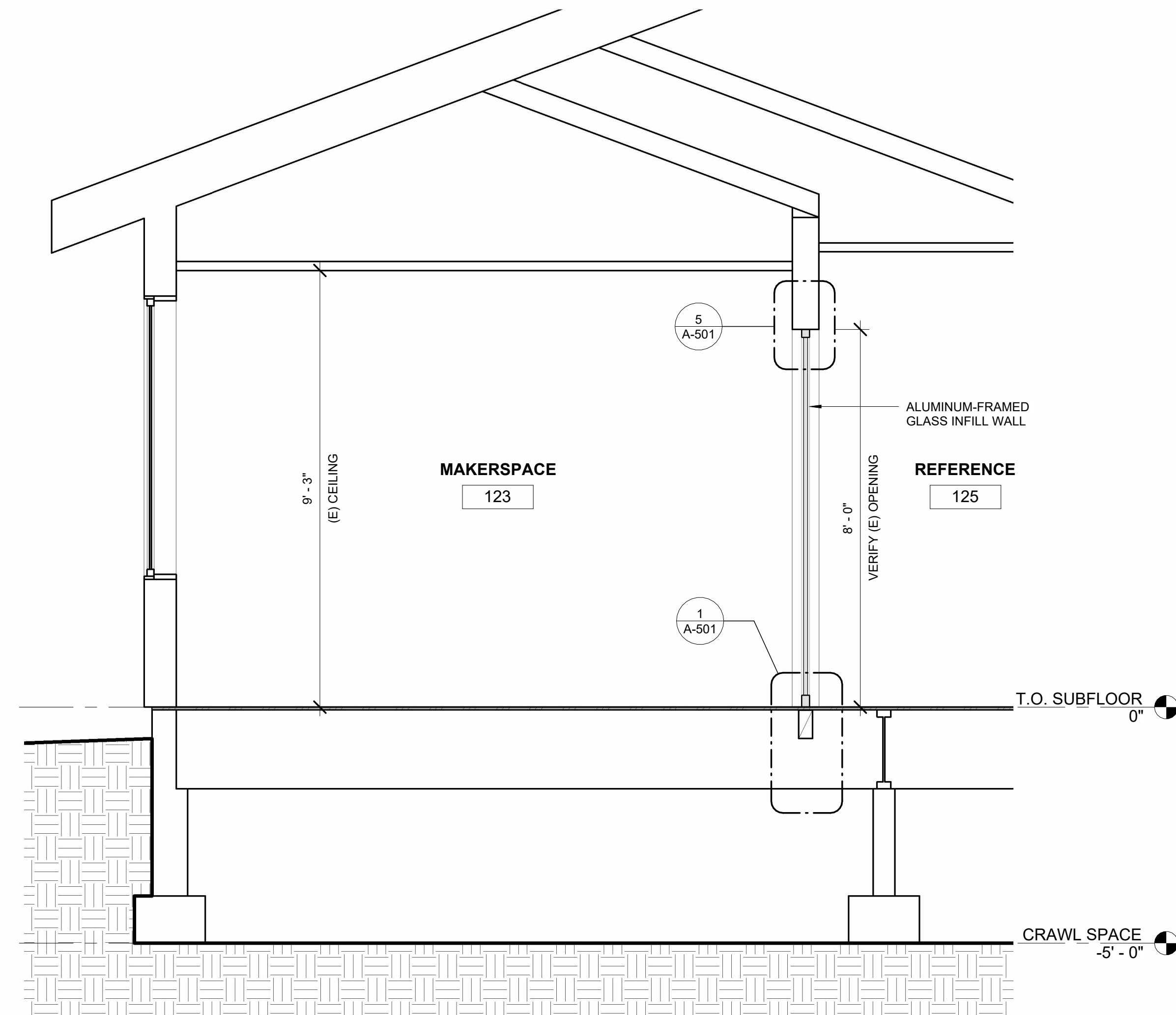
4 ACCESS CONTROL DIAGRAM @ DOOR W/ STRIKE
N.T.S.



3 ACCESS CONTROL DIAGRAM @ DOOR W/ PANIC DEVICE
N.T.S.



2 GLASS INFILL WALL ELEVATION
1/2" = 1'-0"



1 GLASS INFILL WALL SECTION
1/2" = 1'-0"

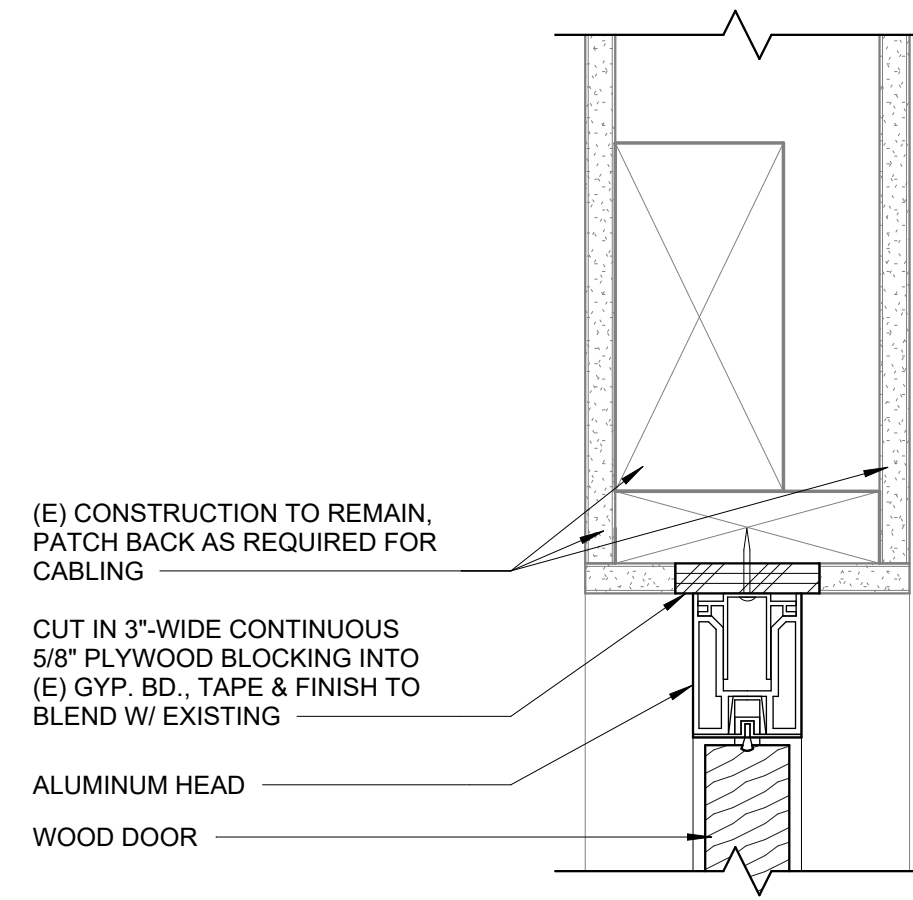
CONSTRUCTION

REVISIONS:
DATE DESCRIPTION

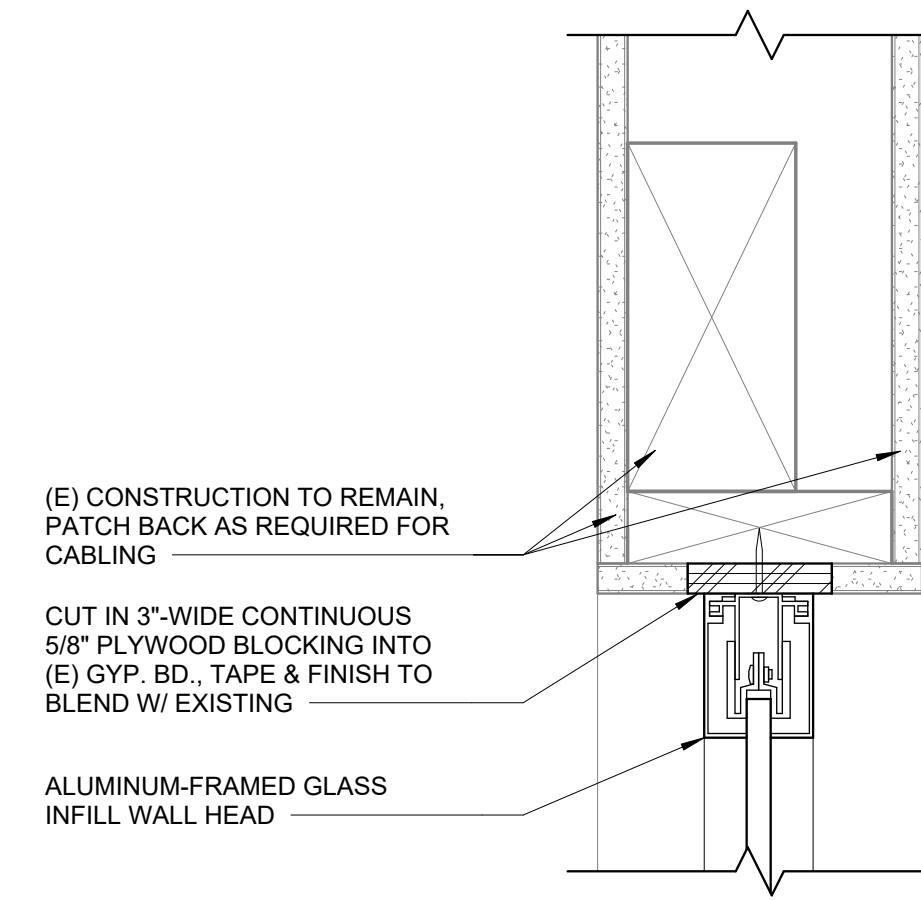
DATE: JULY 2025

SHEET TITLE:
DETAILS

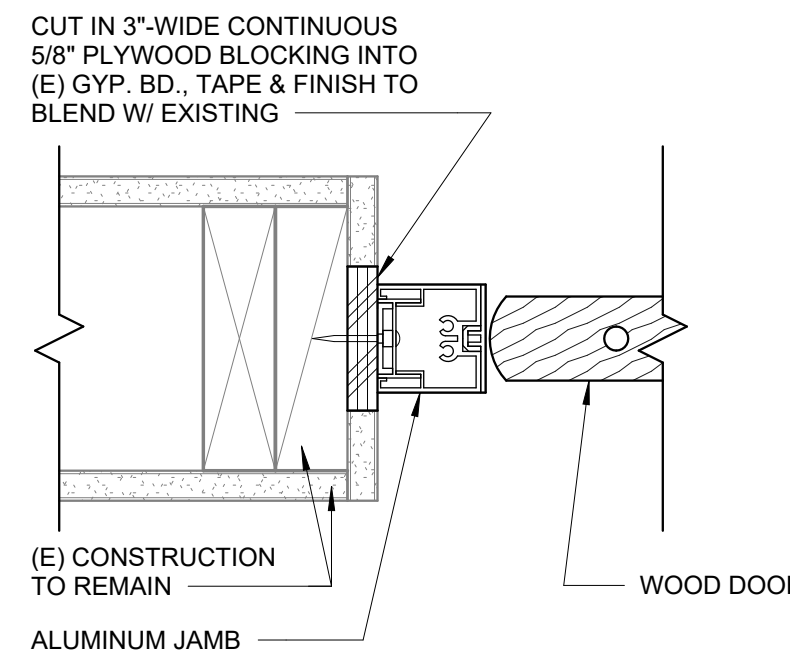
A-501



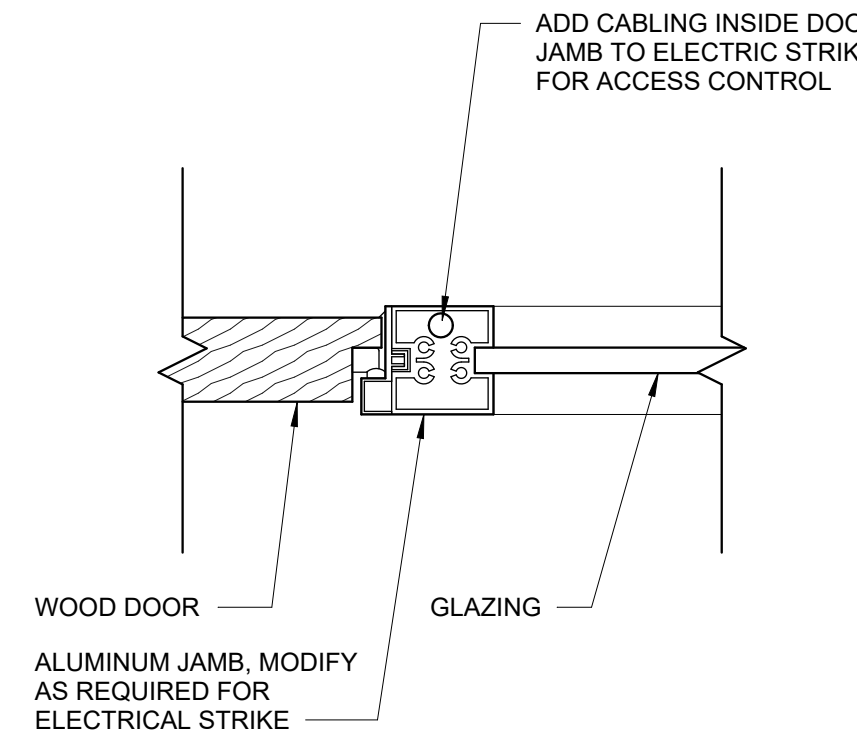
6 ALUM. FRAME DOOR HEAD
3" = 1'-0"



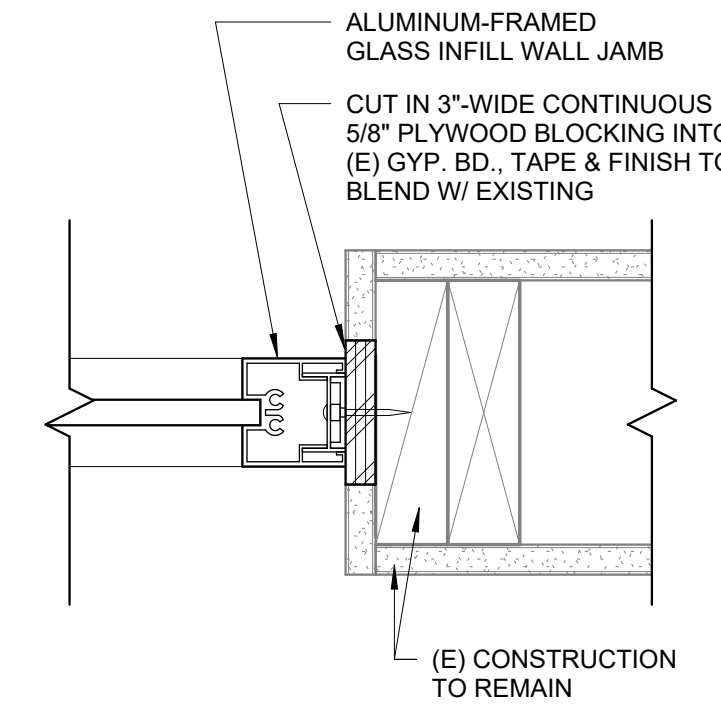
5 GLASS INFILL WALL HEAD
3" = 1'-0"



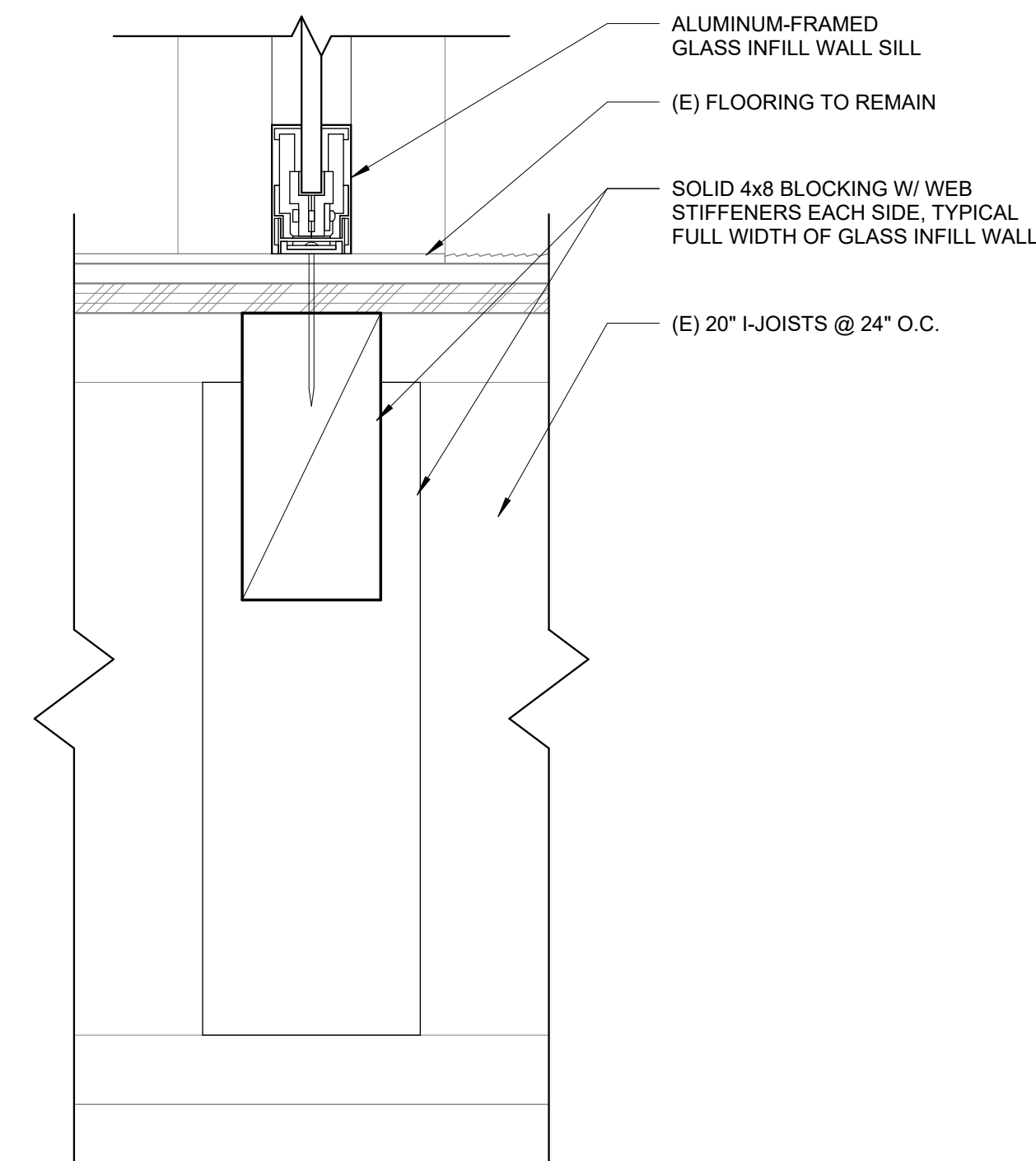
4 ALUM. FRAME DOOR JAMB @ WALL
3" = 1'-0"



3 ALUM. FRAME DOOR JAMB @ GLASS
3" = 1'-0"



2 GLASS INFILL WALL JAMB
3" = 1'-0"



1 GLASS INFILL WALL SILL
3" = 1'-0"