

MILLICOMA MARSH PARKING & TRAIL IMPROVEMENTS

COOS BAY SCHOOL DISTRICT

HGE
ARCHITECTS, INC.

333 S. 4TH STREET
COOS BAY, OR 97420
P: 541.269.1166
www.hge1.com
general@hge1.com



FUNDING BY:

J. A. MOGAN FOUNDATION
THE FORD FAMILY FOUNDATION
TRAVEL SOUTHERN OREGON COAST
COOS BAY-NORTH BEND ROTARY CLUB
OREGON PARKS FOUNDATION
COOS BAY SCHOOL DISTRICT OSAA
BRIAN PRICE

MILLICOMA MARSH TRAIL (ALTERNATE BID):
OPRD RECREATIONAL TRAILS PROGRAM
THREE RIVERS FOUNDATION
MHS ZONTA CLUB

SHEET INDEX

A1.0 COVER SHEET & EXISTING CONDITIONS MAP
A1.1 OVERALL SITE PLAN
A1.2 ENLARGED PARKING LOT PLAN
A1.3 SITE DETAILS

dodge surveying & planning
(541) 404-3799 | rdodgesurvey@gmail.com
SIX FIVE SIX S. 12TH CT
COOS BAY, OREGON 97420

REGISTERED PROFESSIONAL LAND SURVEYOR
PRELIMINARY
OREGON
FEBRUARY 14, 1985
RUSS S. DODGE
2128
EXPIRES 12/31/25

SURVEY FOR:

HGE INC
333 S. 4TH STREET
COOS BAY, OREGON 97420
&
COOS BAY SCHOOL DISTRICT
1255 HEMLOCK AVENUE
COOS BAY, OREGON 97420

PROPERTY INFO

TAX MAP 25 13 25 - TAX LOT 200

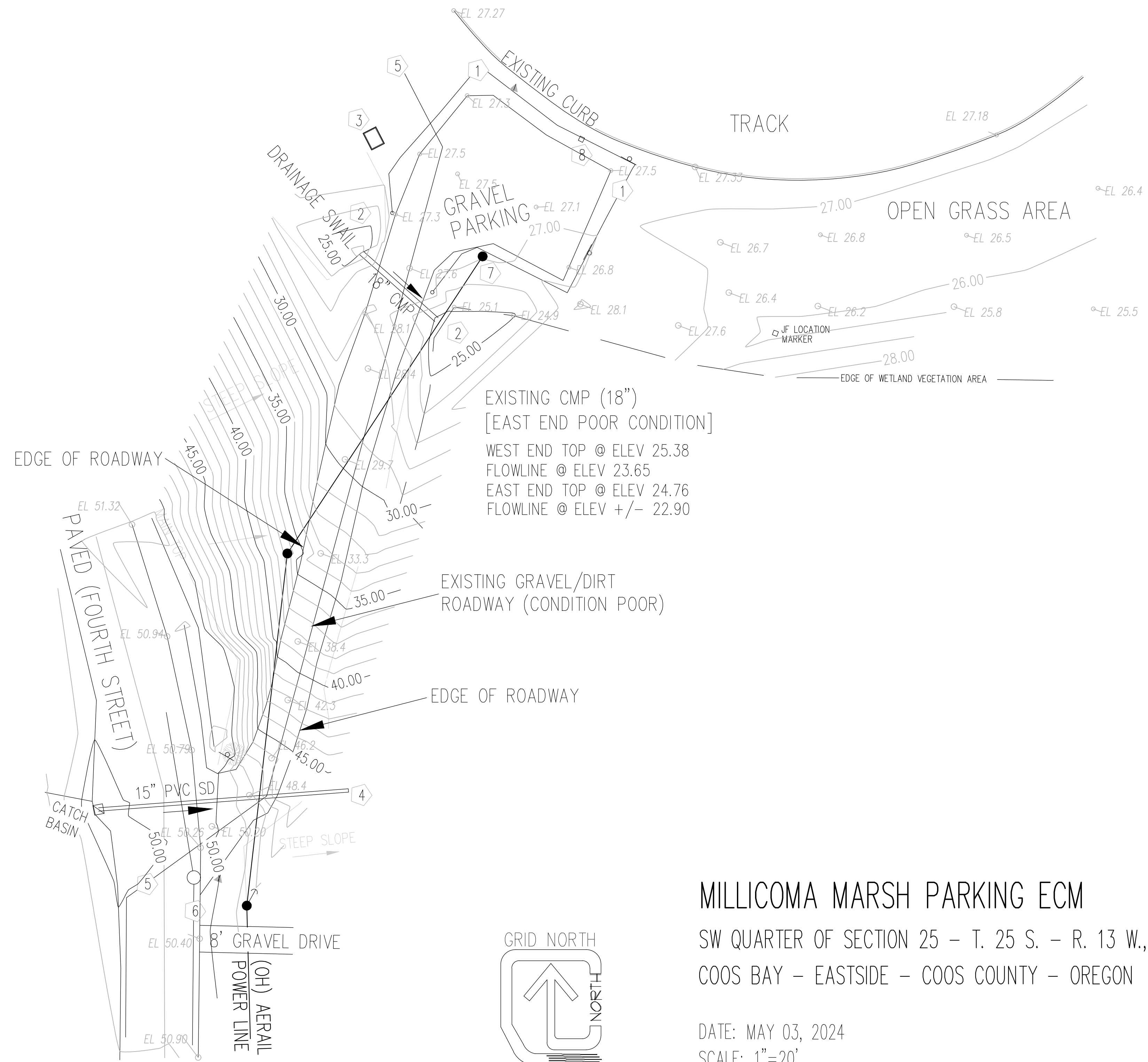
SURVEY NOTES:

- ELEVATIONS SHOWN HAVE BEEN BASED ON AN ASSUMED VALUE.
- CONTOURS HAVE BEEN SHOWN AT A 1' VERTICAL INTERVAL.

- EXISTING POLE BOLLARD LINE [39 IN ALL]
- WETLAND AREA
- FIBERGLASS ABOVE GROUND VAULT [BACKFLOW PREVENTION DEVICE]
- EXISTING 15" PVC SD OPUTLET [LOCATION BY AS-BUILTS]
- EXISTING 12" SEWER FORCE MAIN [LOCATION BY AS-BUILTS]
- EXISTING 8" SEWER LINE [INVERT +20']
- EXISTING POWER POLE W/METER
- SQ BOLLARD (DECORATED)

LEGEND / ABBREVIATIONS

- UTILITY/POWER POLE W/ ANCHOR
- SIGN POST
- TREE
- CATCH BASIN
- DIRECTION
- SPOT ELEVATION
- DS&P CONTROL POINT



MILLICOMA MARSH PARKING ECM

SW QUARTER OF SECTION 25 - T. 25 S. - R. 13 W., W.M.
COOS BAY - EASTSIDE - COOS COUNTY - OREGON

DATE: MAY 03, 2024
SCALE: 1"=20'

PROJECT NO.: 24-024
MILLICOMA MARSH PARKING & TRAIL IMPROVEMENTS
COOS BAY SCHOOL DISTRICT
4TH AVENUE
COOS BAY, OREGON 97420

BIDDING

REVISIONS:
DATE DESCRIPTION

DATE: JUNE 2024

SHEET TITLE:
COVER SHEET & EXISTING CONDITIONS MAP

A1.0

Copyright © 2024
HGE ARCHITECTS, INC.

TRAIL
BASE COURSE MATERIAL TYPE

TYPE	MATERIAL	GRADATION	COMMENTS
B1	PITRUN	3" MINUS	NATIVE MATERIAL SOURCE
B2	AGGREGATE	X	
B3	X	X	

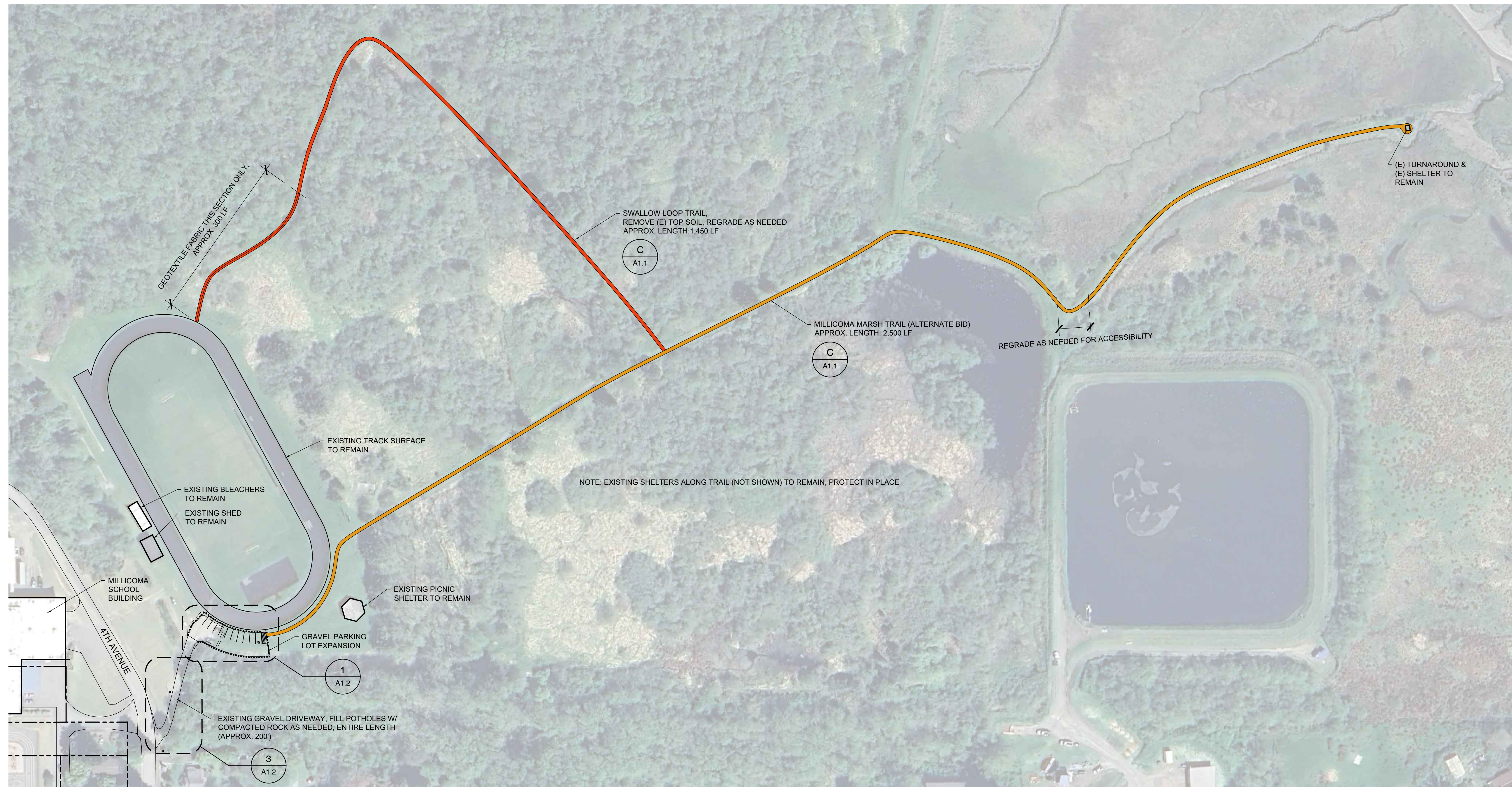
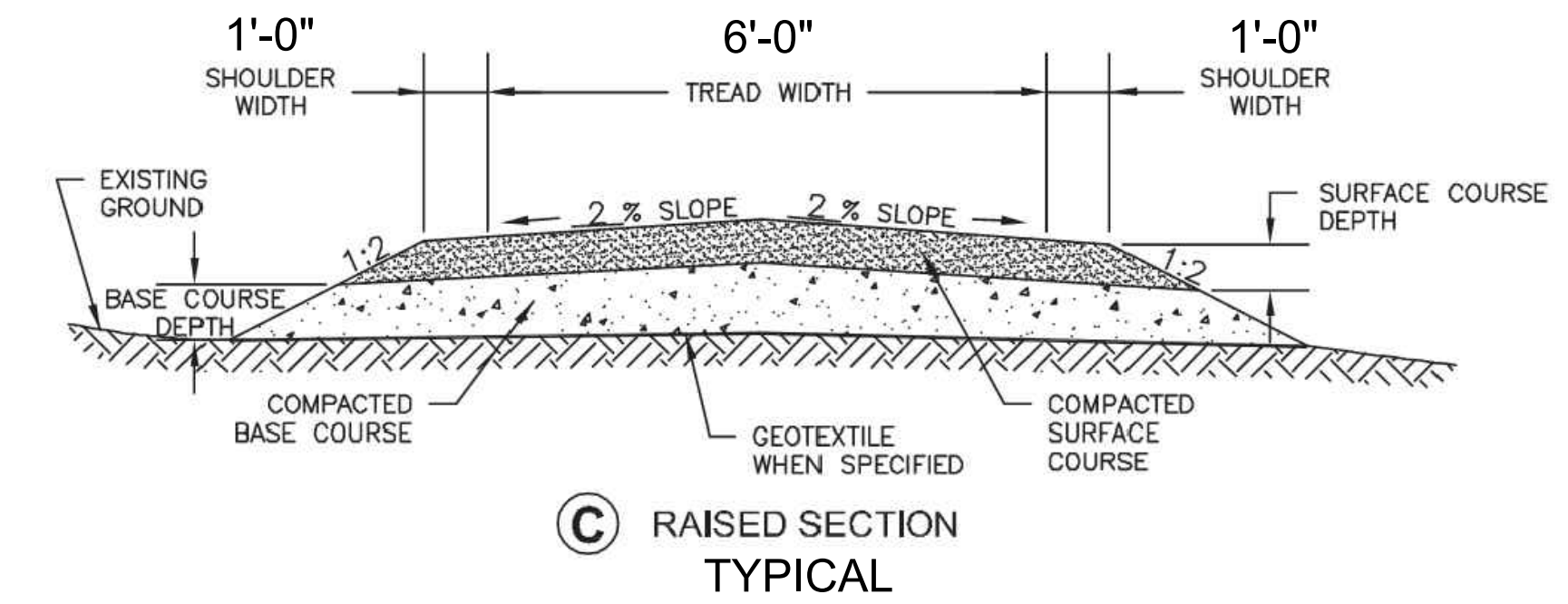
TRAIL
SURFACE COURSE MATERIAL TYPE

TYPE	MATERIAL	GRADATION	COMMENTS
S1	PITRUN	X	X
S2	AGGREGATE	1" MINUS	COMMERCIAL SOURCE
S3	CLAY	X	
S4	WOODCHIPS	X	
S5	X	X	

TRAIL
SURFACING SECTIONS

TYPICAL ID	SECTION TYPE	TREAD WIDTH	SHOULDER WIDTH		GEOTEXTILE TYPE	BASE COURSE		SURFACE COURSE		COMMENTS
			UPHILL	DOWNHILL		TYPE	DEPTH	TYPE	DEPTH	
TSS-1	B	24 IN	12 IN	12 IN	YES	B 1	6	S 2	6 IN	HIKING USE—GEOTEXTILE—NON—WOVEN
TSS-2	A	18 IN	6 IN	6 IN	NA	B 1	6	S 2	6 IN	MOUNTAIN BIKE USE
TSS-3	C	48 IN	12 IN	12 IN	NA	B 1	6	S 2	6 IN	OHV USE

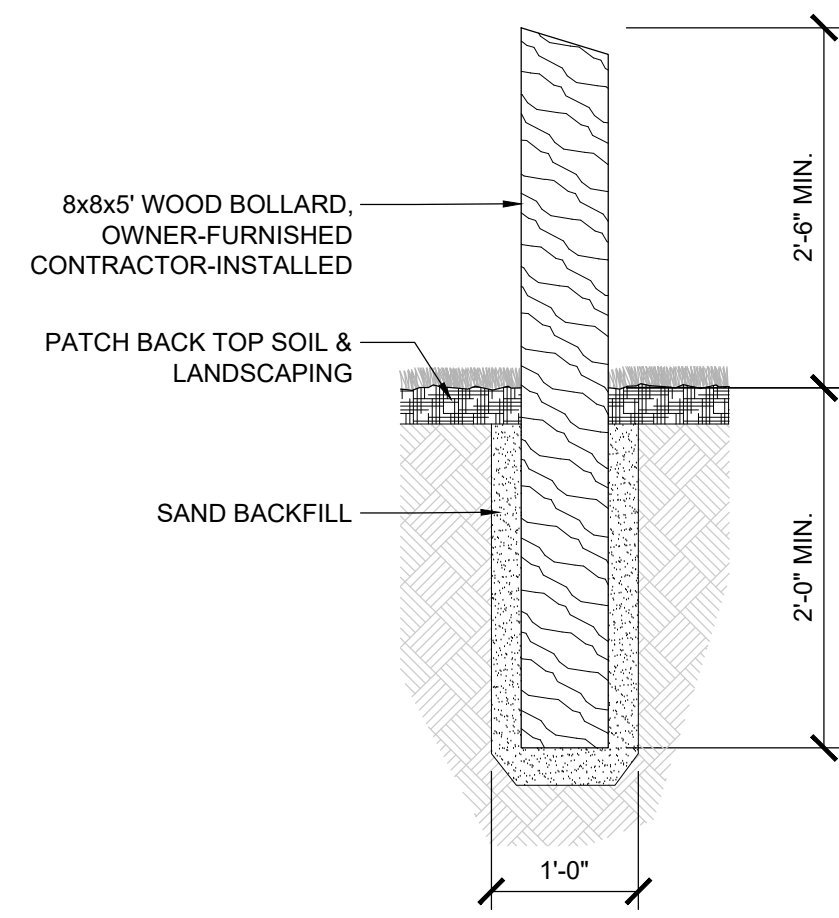
N/A WHEN NOT APPLICABLE



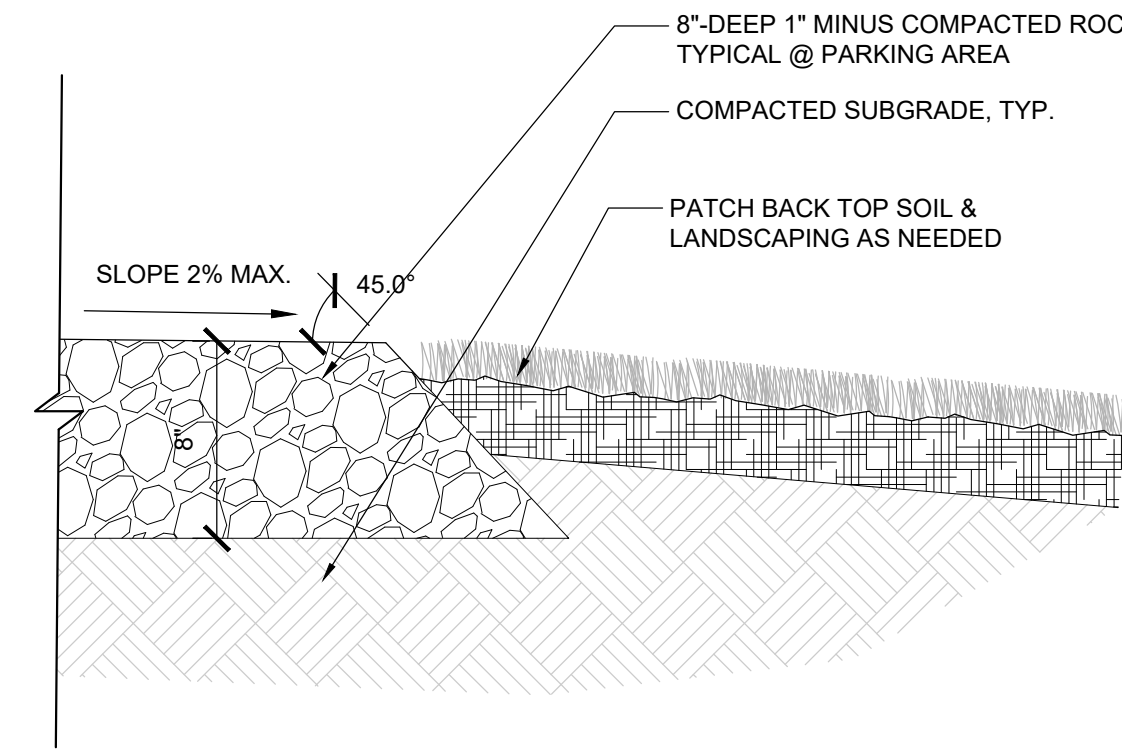
BIDDING

REVISIONS:	#	DATE	DESCRIPTION

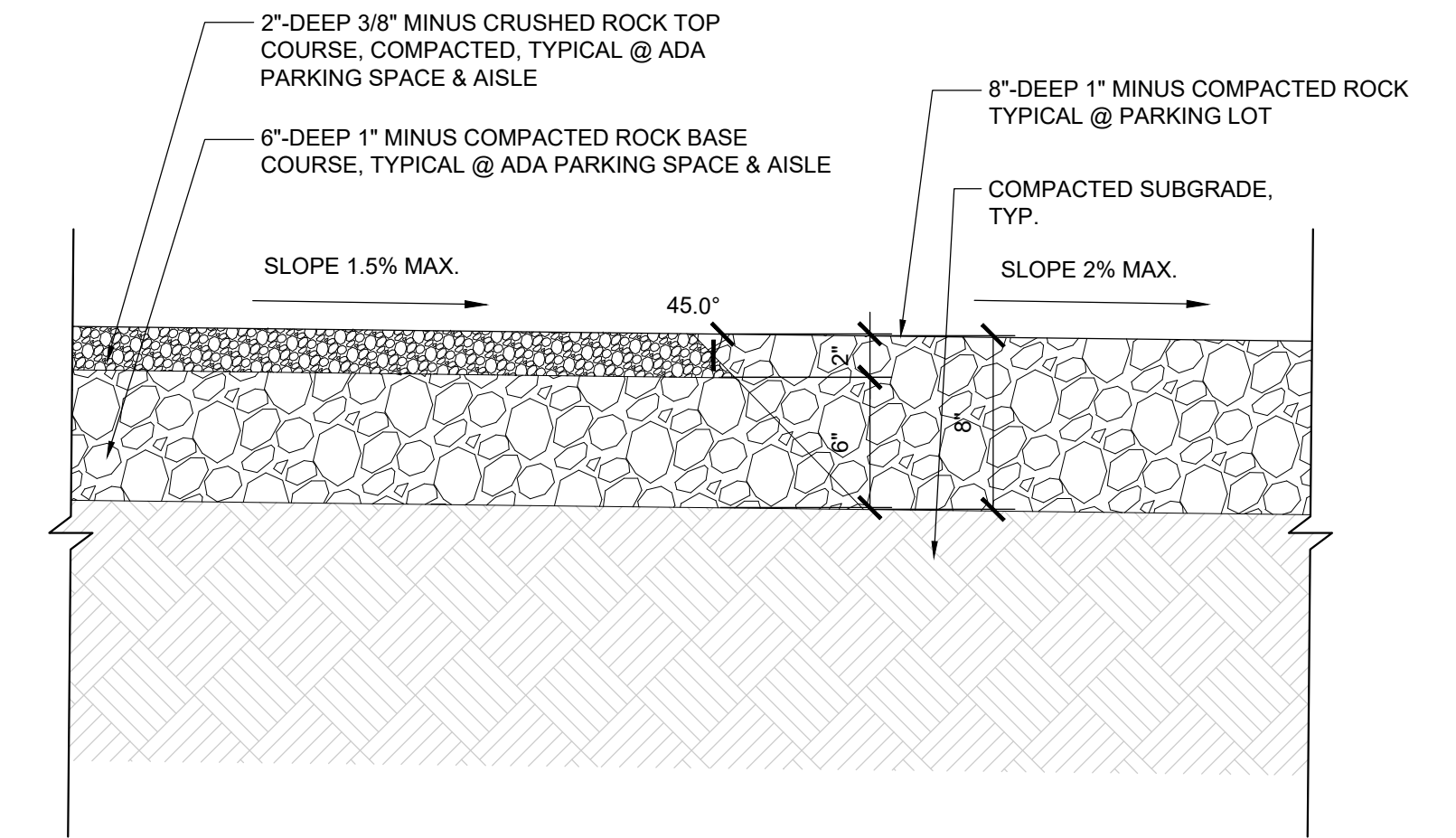
DATE: JUNE 2024
SHEET TITLE:
OVERALL SITE PLAN



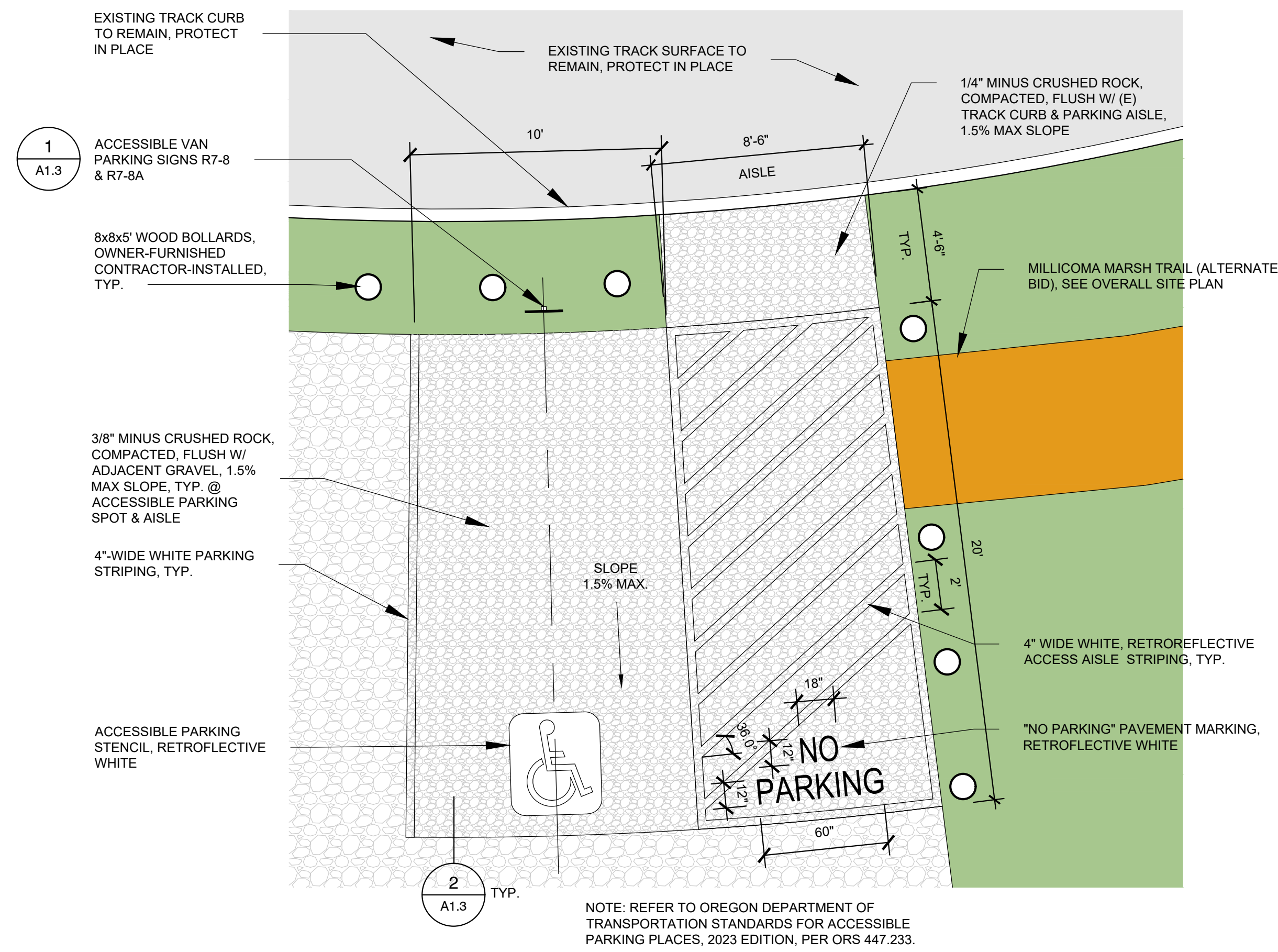
4 WOOD BOLLARD, TYP.
A1.3 SCALE: 3/4" = 1'-0"



3 GRAVEL EDGE, TYP.
A1.3 SCALE: 1-1/2" = 1'-0"



2 ADA PARKING EDGE, TYP.
A1.3 SCALE: 1-1/2" = 1'-0"

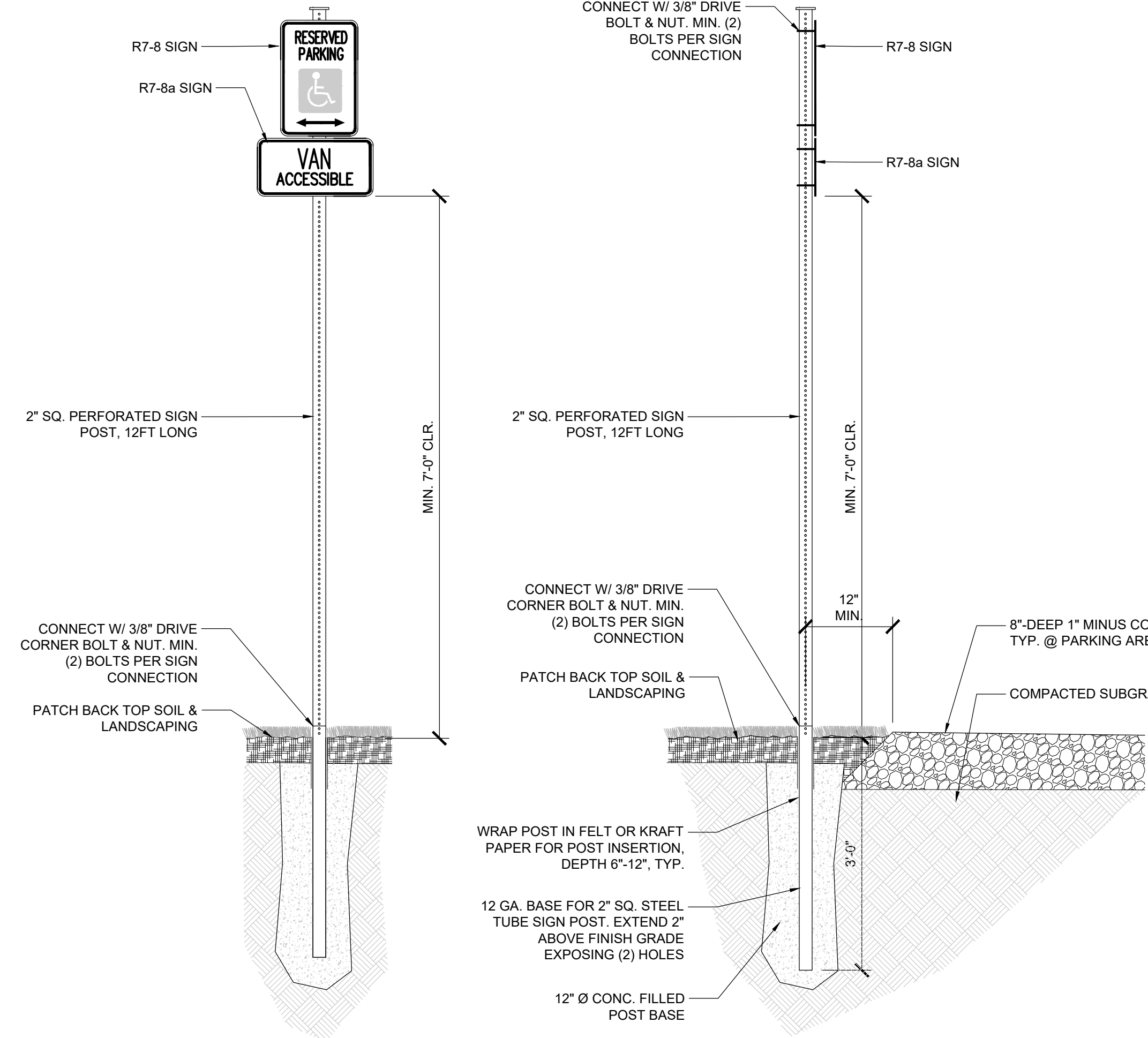


1
A1.3

2
A1.3 TYP.

NOTE: REFER TO OREGON DEPARTMENT OF TRANSPORTATION STANDARDS FOR ACCESSIBLE PARKING PLACES, 2023 EDITION, PER ORS 447.233.

5 ADA PARKING SPACE & AISLE
A1.3 SCALE: 1/4" = 1'-0"



1 ADA PARKING SIGNAGE
A1.3 SCALE: 3/4" = 1'-0"

BIDDING

REVISIONS:	#	DATE	DESCRIPTION

DATE: JUNE 2024

SHEET TITLE:

SITE DETAILS