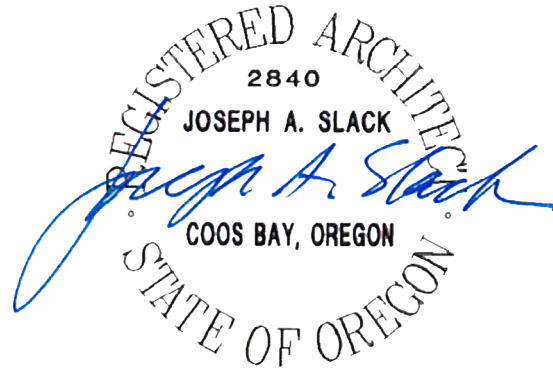


ADDENDUM #1 – FEBRUARY 22, 2024

**RE: COQUILLE SCHOOL DISTRICT
Bus Maintenance Building
Project #22.97**

**FROM: HGE ARCHITECTS, Inc.
333 South 4th Street
Coos Bay, Oregon 97420
541-269-1166**



TO: Prospective Bidders

This Addendum forms a part of the Contract Documents and modifies the original Documents dated February 2024, as noted below. Acknowledge receipt of this Addendum in the space provided on the Bid Form. Failure to do so may subject Bidder to disqualification.

This Addendum consists of **TWO (2)** page(s) together with the following attachments:

- **Sheet A3.1 – Building Sections & Details**
- **Sheet A3.2 – Building Sections & Details**
- **Sheet A7.1 – Schedules**
- **Sheet S4.2 – Foundation Details**
- **Sheet S6.1 – Framing Details**

CHANGES TO PROJECT MANUAL:

1. **Section 07-2100 Thermal Insulation, 2.03:** ADD “B. Extruded Polystyrene (XPS) Board Insulation: Complies with ASTM C578 with either natural skin or cut cell surfaces.
 1. Flame Spread Index (FSI): Class A - 0 to 25, when tested in accordance with ASTM E84.
 2. Smoke Developed Index (SDI): 450 or less, when tested in accordance with ASTM E84.
 3. Type and Thermal Resistance, R-value: Type IV, 5.0 (0.88) per 1 inch thickness at 75 degrees F mean temperature.
 4. Board Edges: Square.
 5. Type and Water Absorption: Type XII, 0.3 percent by volume, maximum, by total immersion.
 6. Products:
 - a. DuPont de Nemours, Inc.; Styrofoam Brand Square Edge: building.dupont.com/#sle.
 - b. Owens Corning Corporation; FOAMULAR Extruded Polystyrene (XPS) Insulation: www.ocbuildingspec.com/#sle.
 - c. Substitutions: See Section 01-6000 - Product Requirements.
 7. Location – below slab as shown in Drawings.”

2. **Section 22-4000 Plumbing Fixtures:** Paragraph 2.03 L: REPLACE with “L. Drinking Fountain, “DF-1”: Wall mounted, Light Gray, non-refrigerated, non-filtered, hands free, Vandal-resistant ADA Bi-Level fountain with bottle filling station. Provide with wall mounting plate, stainless steel wall plate. Elkay-EZSTLDDWSVRLK, or equal Halsey Taylor, Haws, Oasis.”

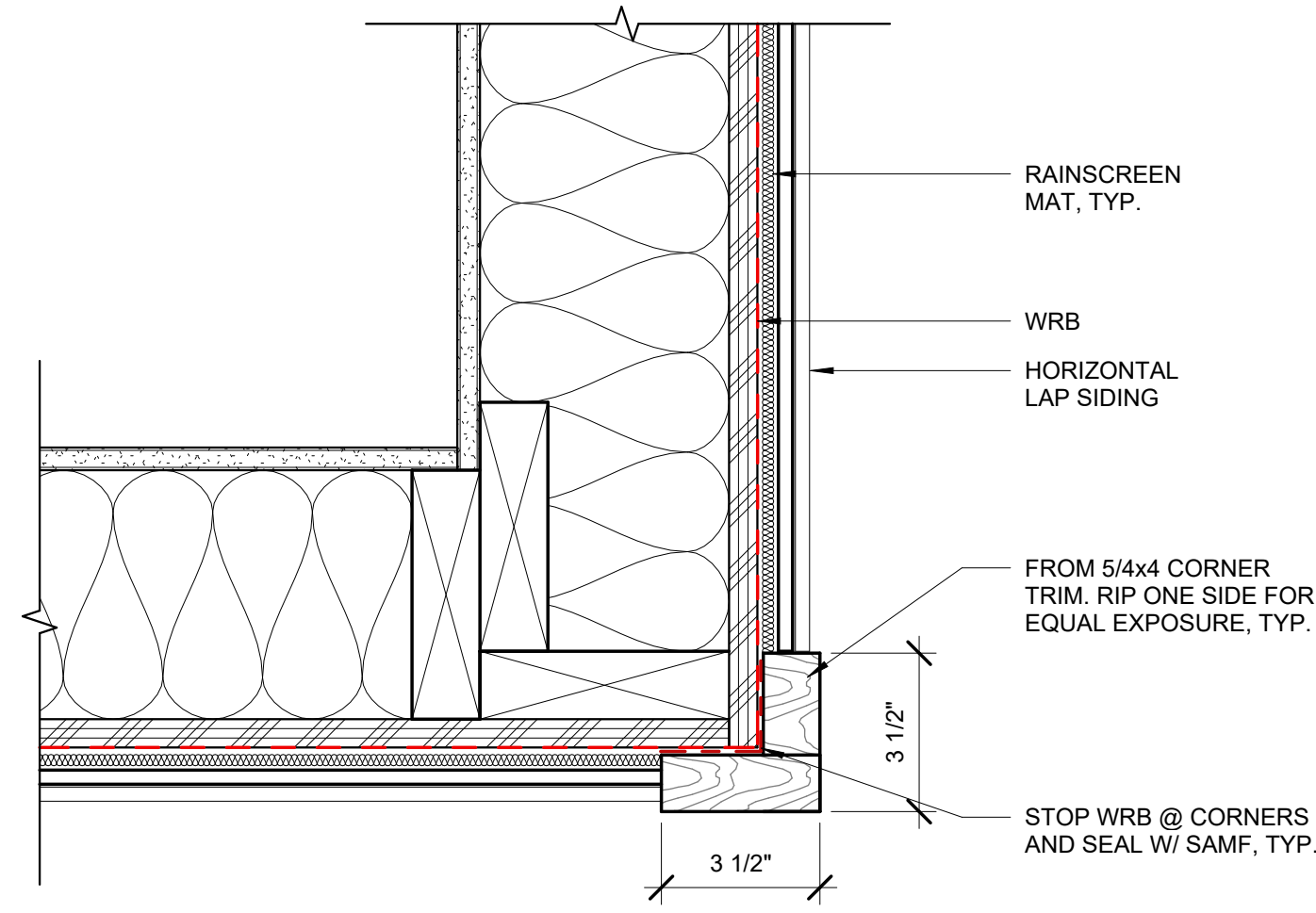
CHANGES TO DRAWINGS:

1. **Sheet A2.1 – Floor Plans:** REPLACE single drinking fountain with ADA bi-level drinking fountain.
2. **Sheet A3.1 – Building Sections & Details:** REPLACE with REVISED Sheet A3.1 – Building Sections & Details, attached. Revisions include addition of Detail 7 – Mounting Block.
3. **Sheet A3.2 – Building Sections & Details:** REPLACE with REVISED Sheet A3.2 – Building Sections & Details, attached.
 - a. **Revision Summary:**
 - i. **Details 2, 6, & 8:** Added note: “(3) 3”Ø vent holes each joist bay.”
 - ii. **Detail 2 & 6:** Added insulation baffle at blocking between I-joists. Deleted “14-inch” from note “14-inch wood I-joists, see Structural.”
 - iii. **Detail 4:** Added note: “(3) 1-1/2”Ø vent holes each joist bay.”
 - iv. **Detail 3:** Added blocking, revised dimensions, and added note: “blocking w/ (3) 2”Ø vent holes each joist bay.”
4. **Sheet A7.1 – Schedules:** REPLACE with REVISED Sheet A7.1 – Schedules, attached.
 - a. **Revision Summary:**
 - i. Added Door Type B, Vision Glass Door.
 - ii. Changed Door 1A & 8A to Type C
 - iii. Changed Door 1B & 2 to Type B.
5. **Sheet S2.1 – Foundation Plan:** ROTATE Detail Callout 4/S4.2 at exterior column footing.
6. **Sheet S2.3 – Roof Framing Plan:** ADD Detail Callout 13/S6.1 at roof ridge.
7. **Sheet S4.2 – Foundation Details:** REPLACE with REVISED Sheet S4.2 – Foundation Details, attached. Revisions include replacement of Detail 4 – Exterior Wood Post Footing on Concrete Pedestal, formerly “Interior Thickened Slab Footing at Wood Post.”
8. **Sheet S6.1 – Framing Details:** REPLACE with REVISED Sheet S6.1 – Framing Details, attached. Revisions include addition of Detail 13 – Vented Roof Ridge Connection and revision of vent hole notes to “3”Ø MAX.”

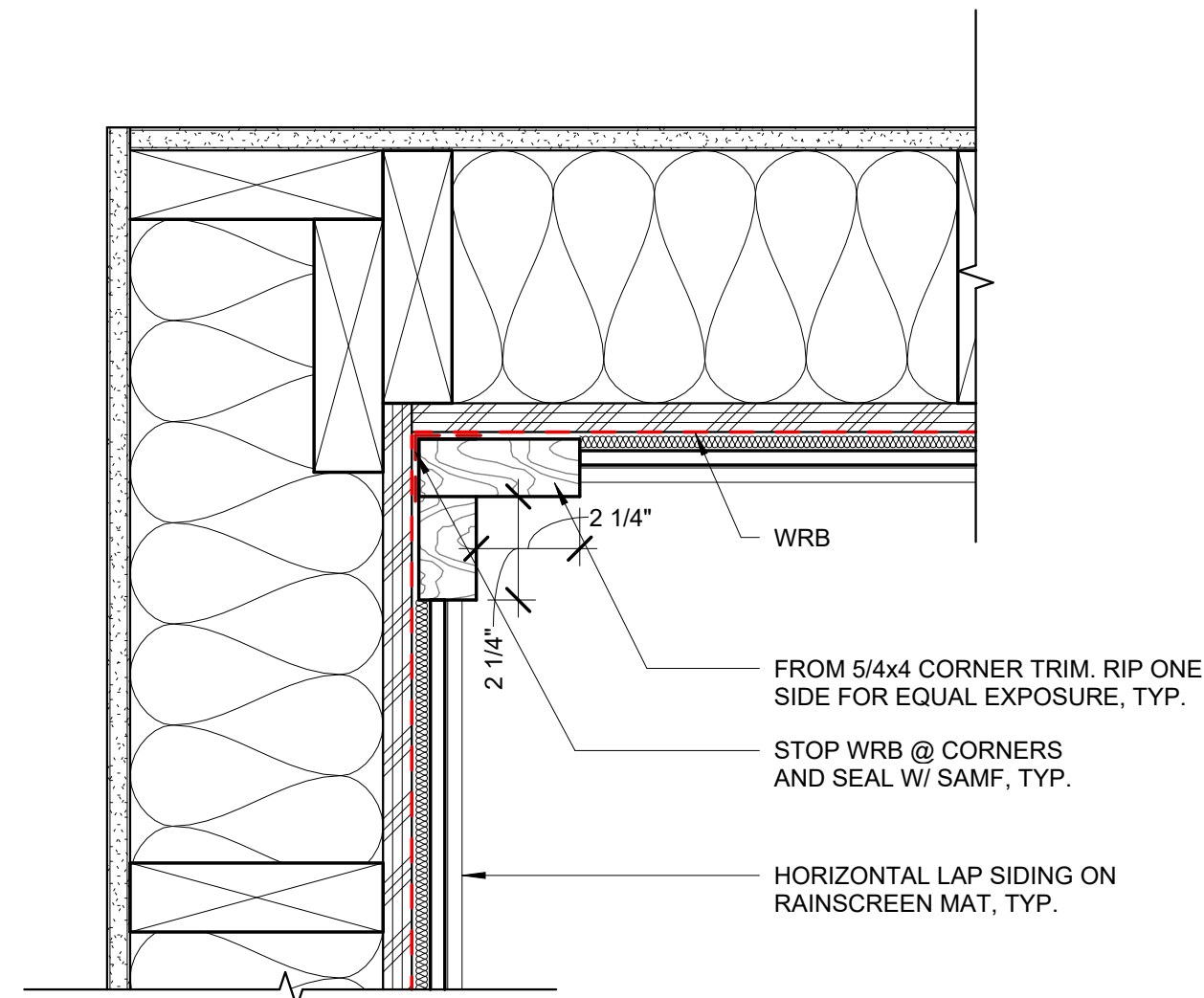
SUBSTITUTION APPROVALS:

<u>SPECIFIED SECTION</u>	<u>SPECIFIED ITEM</u>	<u>APPROVED</u>
03-3511 Concrete Floor Finishes	Joint Filler	Hi-Tech PE90
07-2500 Weather Barriers	Vapor Permeable Air Barrier	WR Meadows Air-Shield SMP

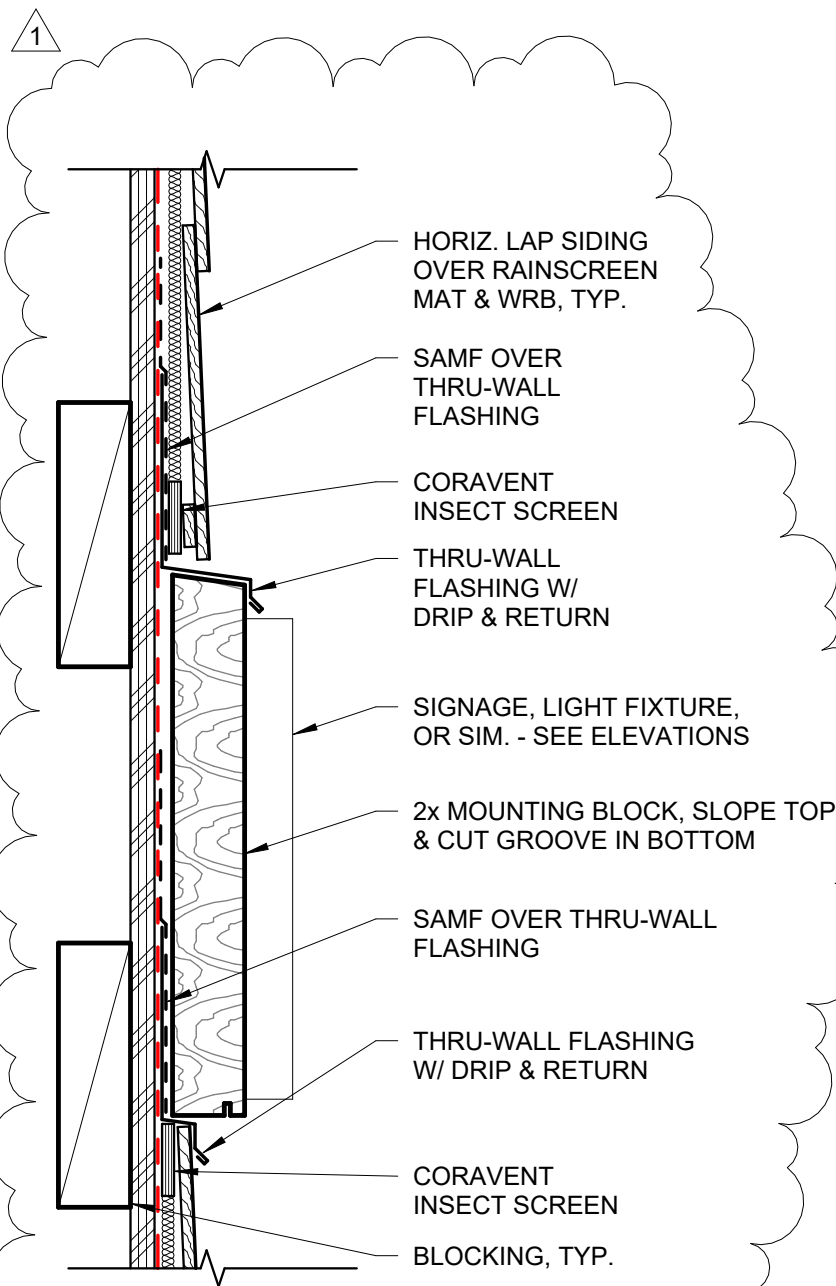
END OF ADDENDUM #1



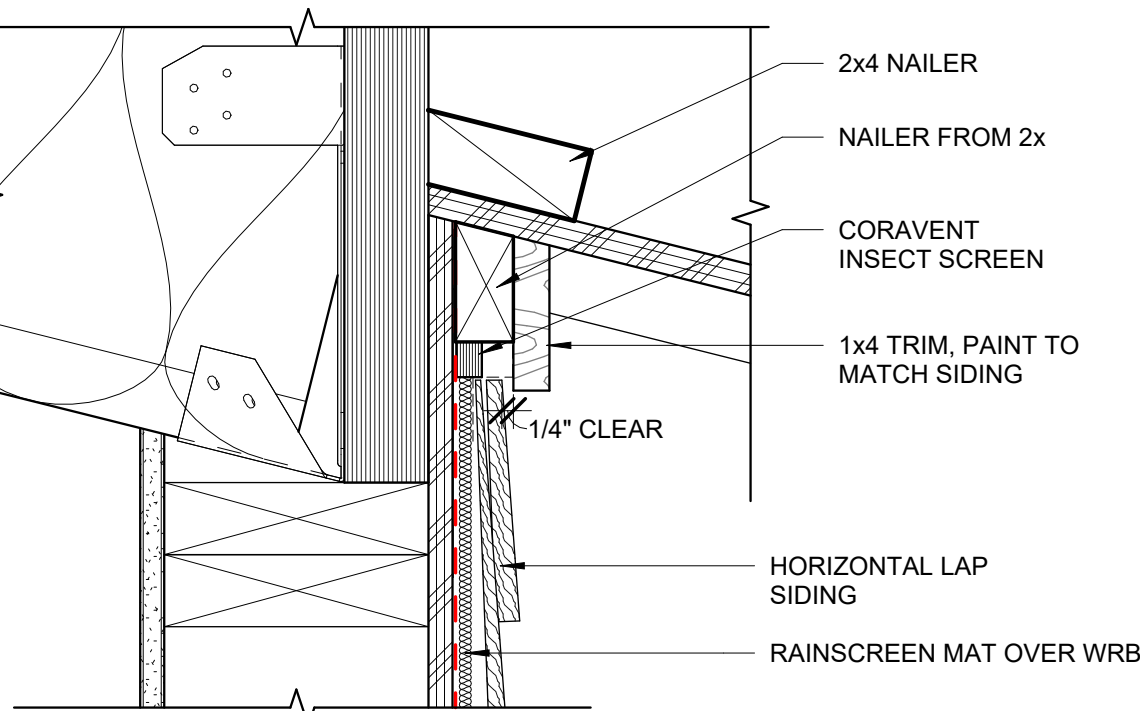
6 OUTSIDE CORNER @ HORIZONTAL SIDING
3" = 1'-0"



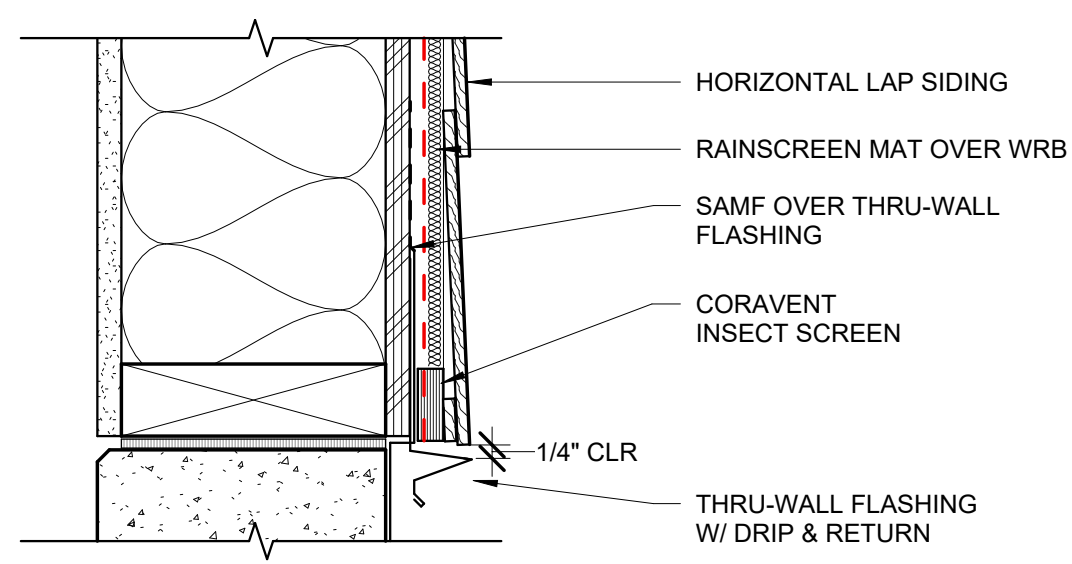
5 INSIDE CORNER @ HORIZONTAL BOARD SIDING
3" = 1'-0"



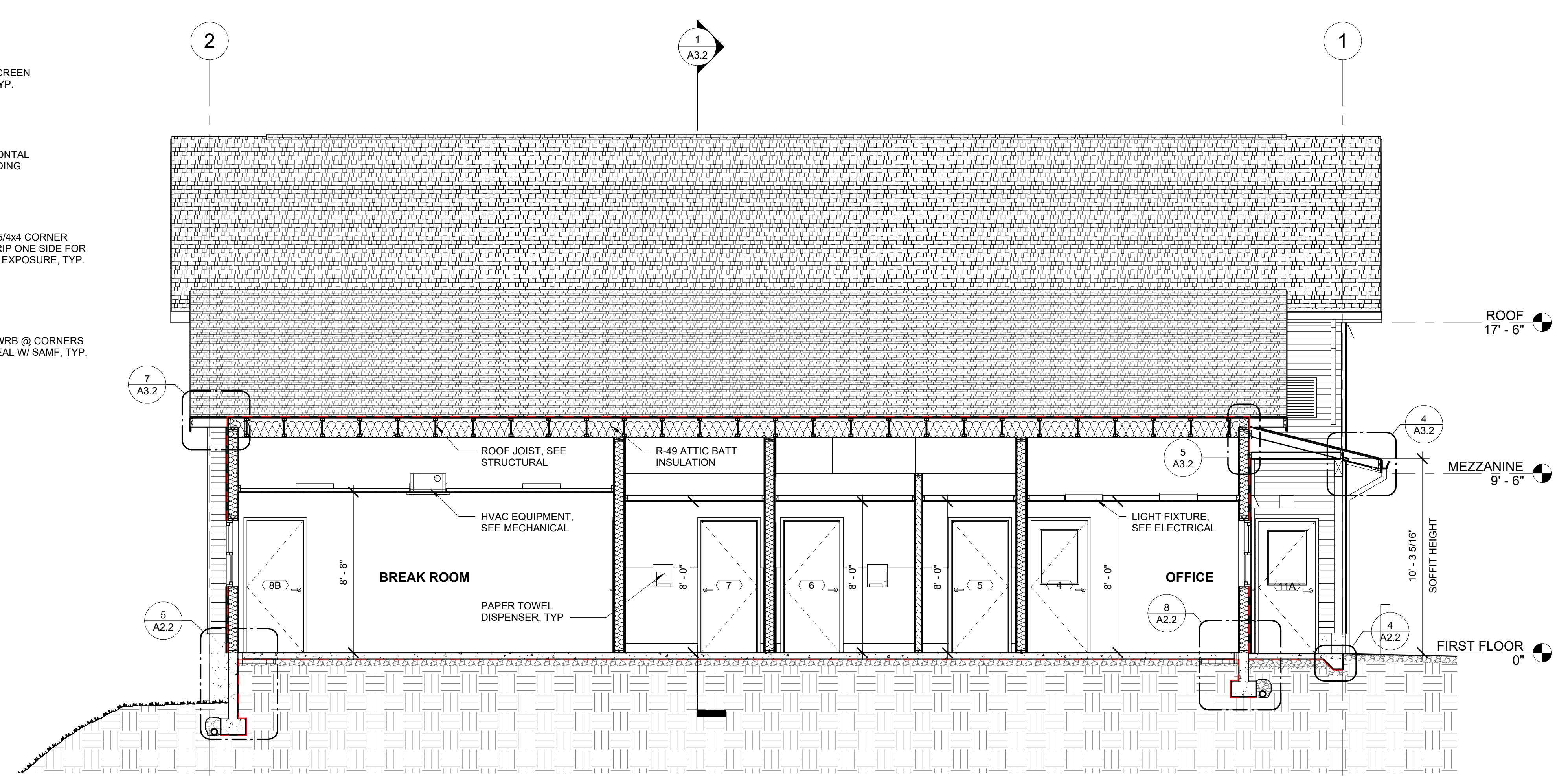
7 MOUNTING BLOCK
3" = 1'-0"



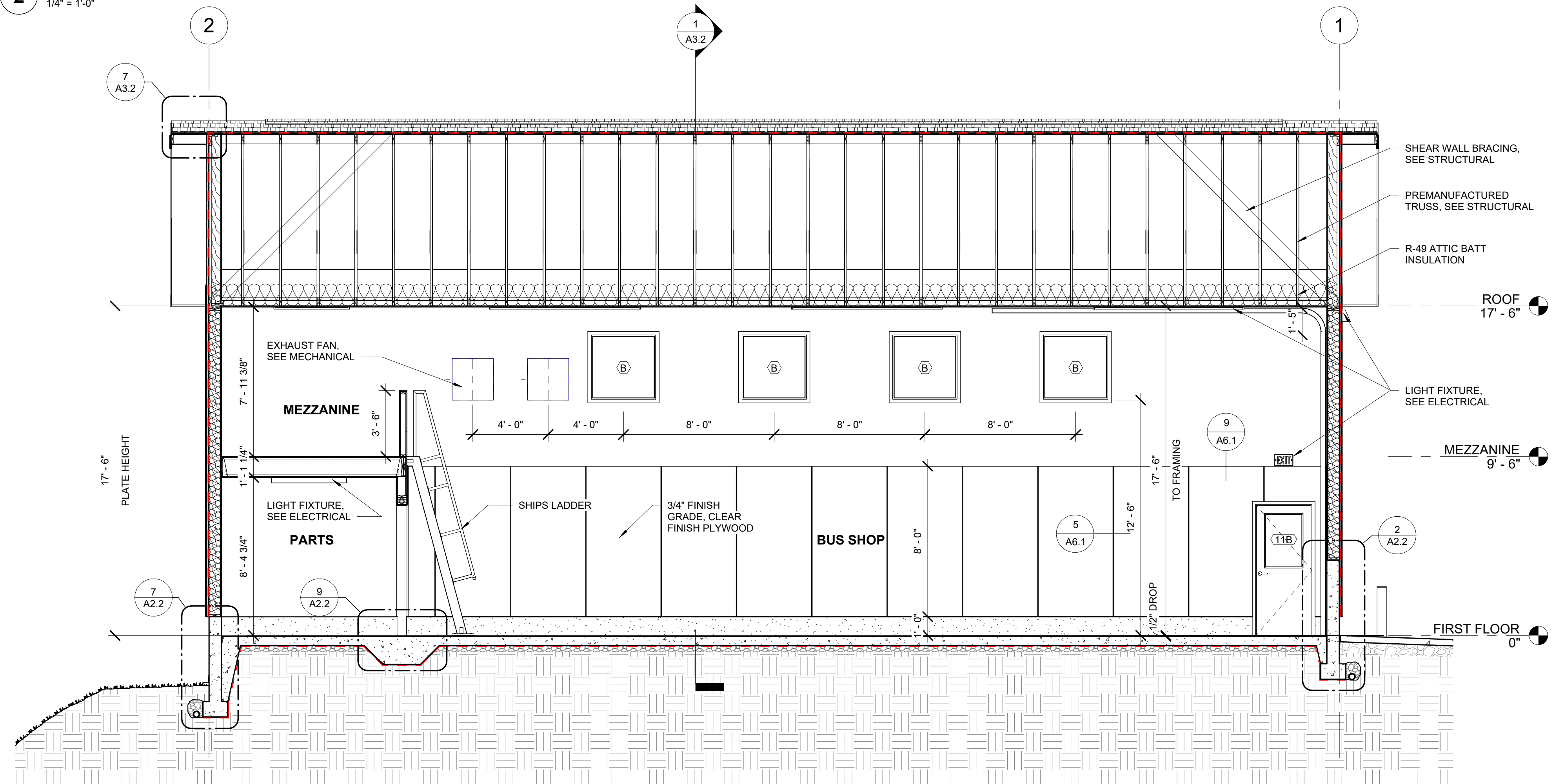
4 TOP OF RAINSCREEN
3" = 1'-0"



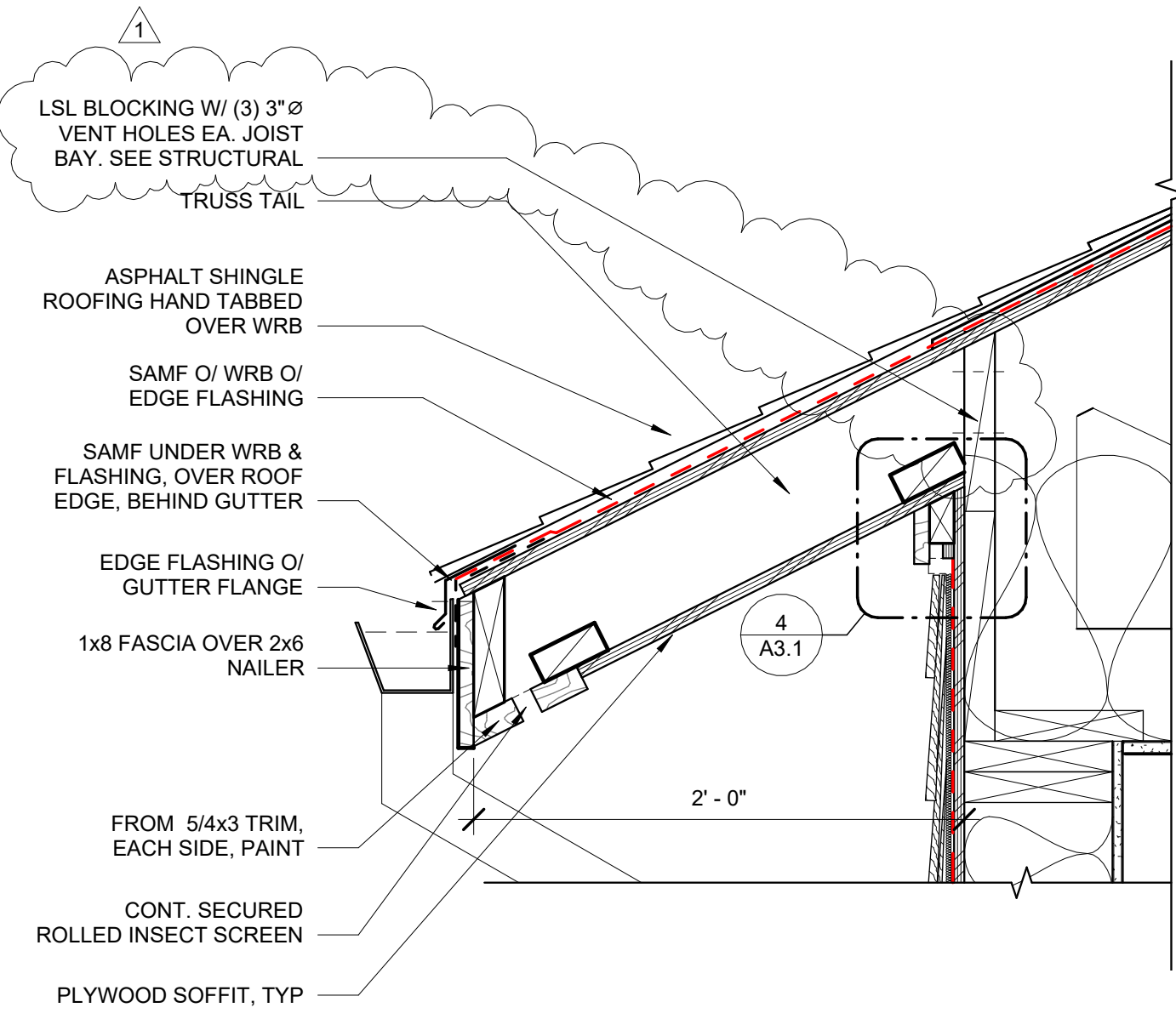
3 BOTTOM OF RAINSCREEN
3" = 1'-0"



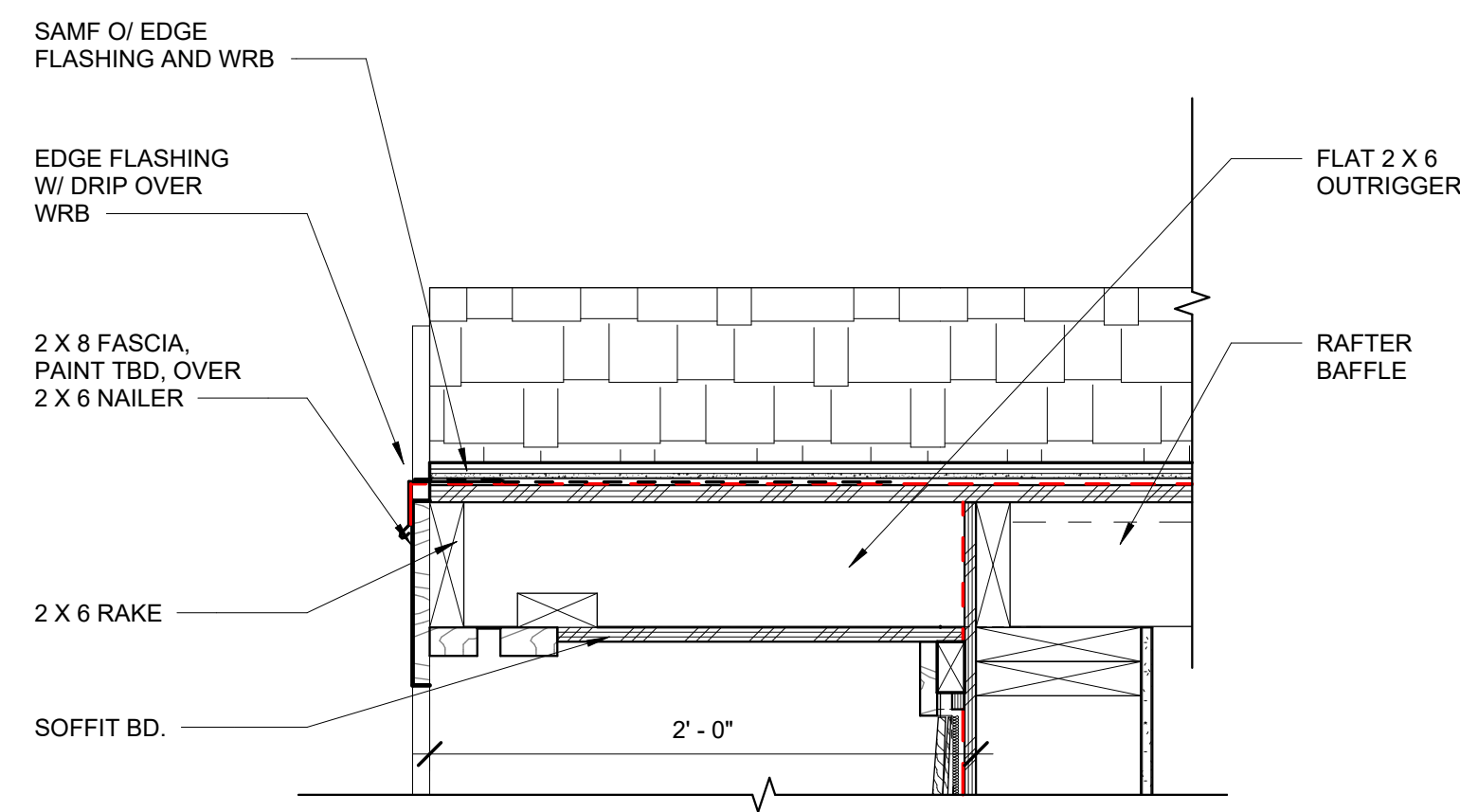
2 E-W SECTION @ BREAK ROOM / HALL / OFFICE
1/4" = 1'-0"



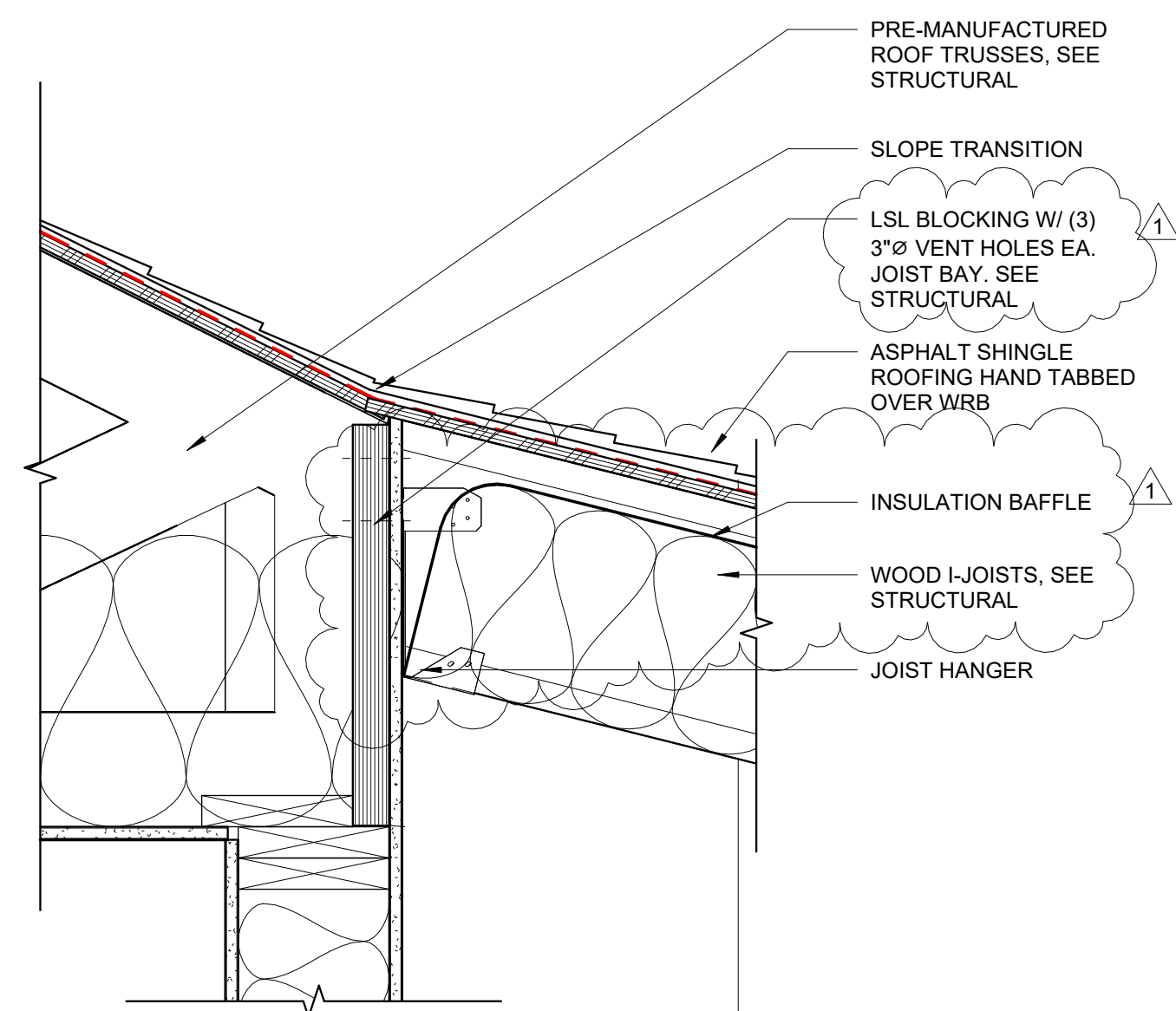
1 E-W SECTION @ BUS SHOP / PARTS / MEZZANINE
1/4" = 1'-0"



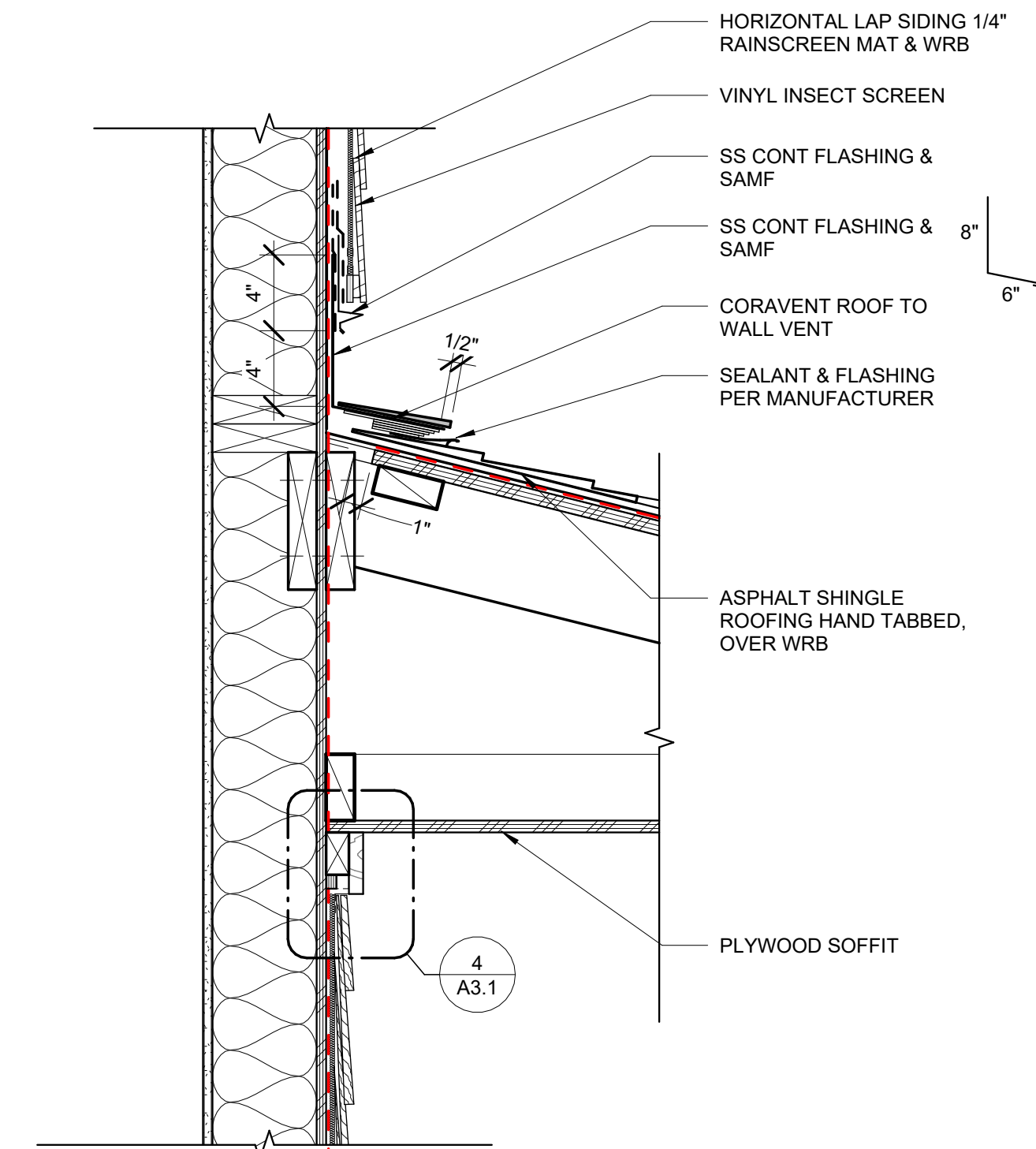
8 ROOF EAVE @ GARAGE
1 1/2" = 1'-0"



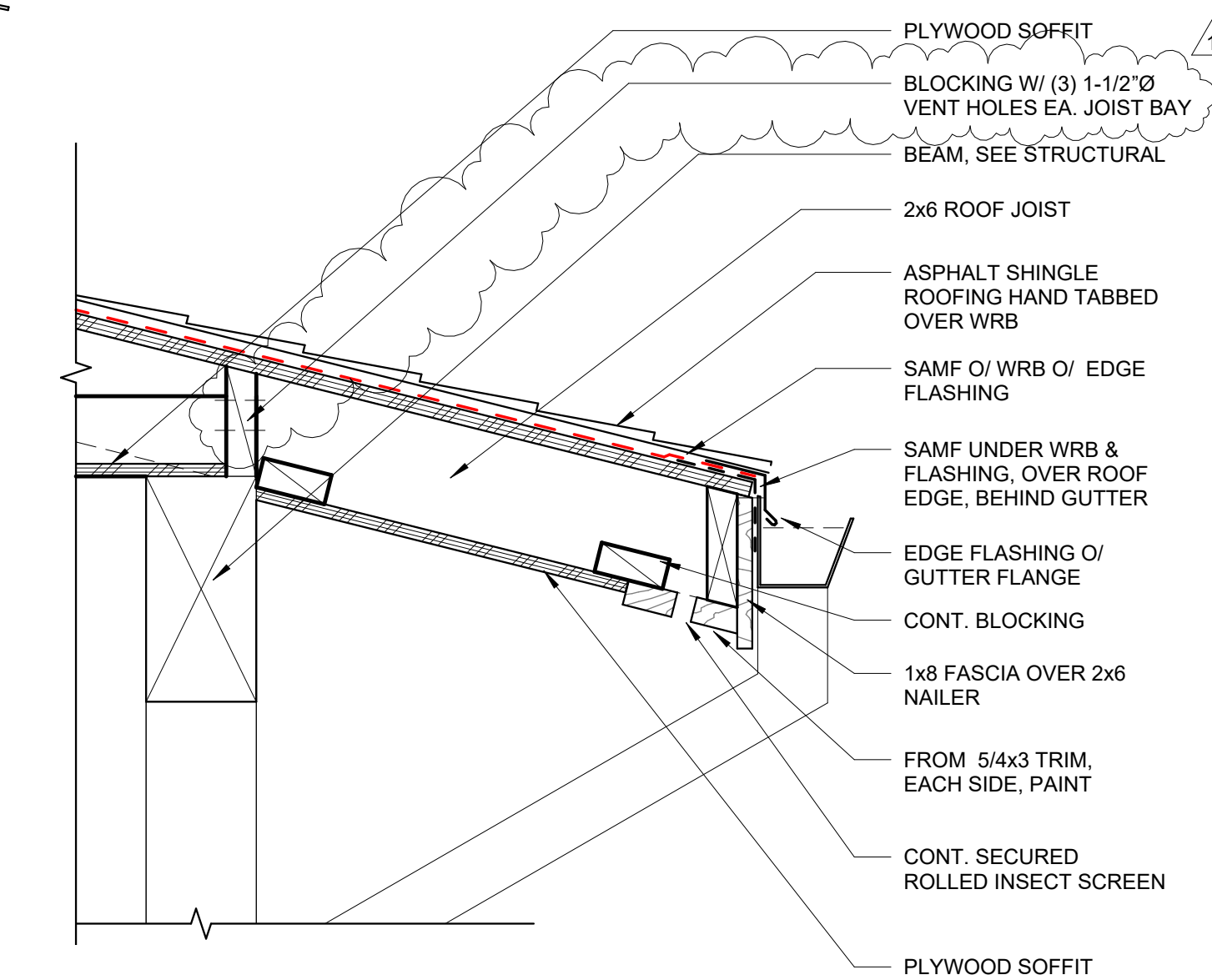
7 TYPICAL ROOF RAKE
1 1/2" = 1'-0"



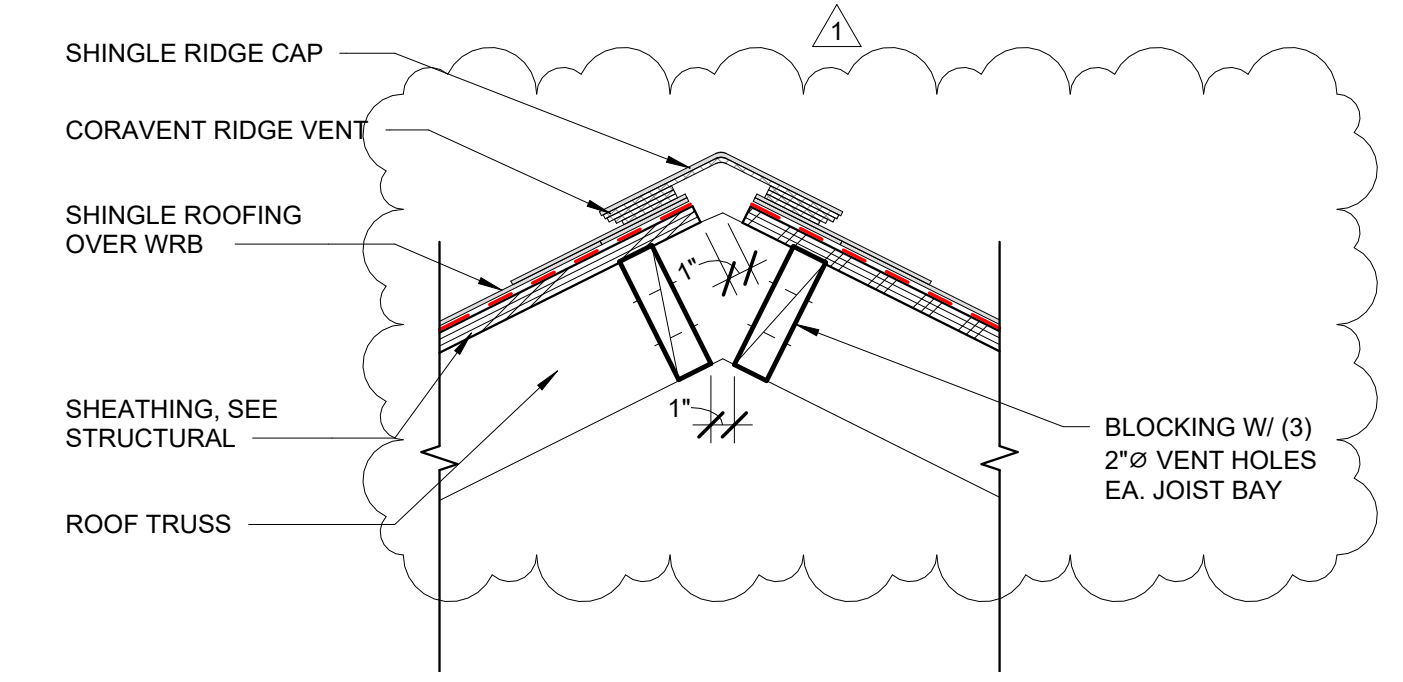
6 ROOF TRANSITION
1 1/2" = 1'-0"



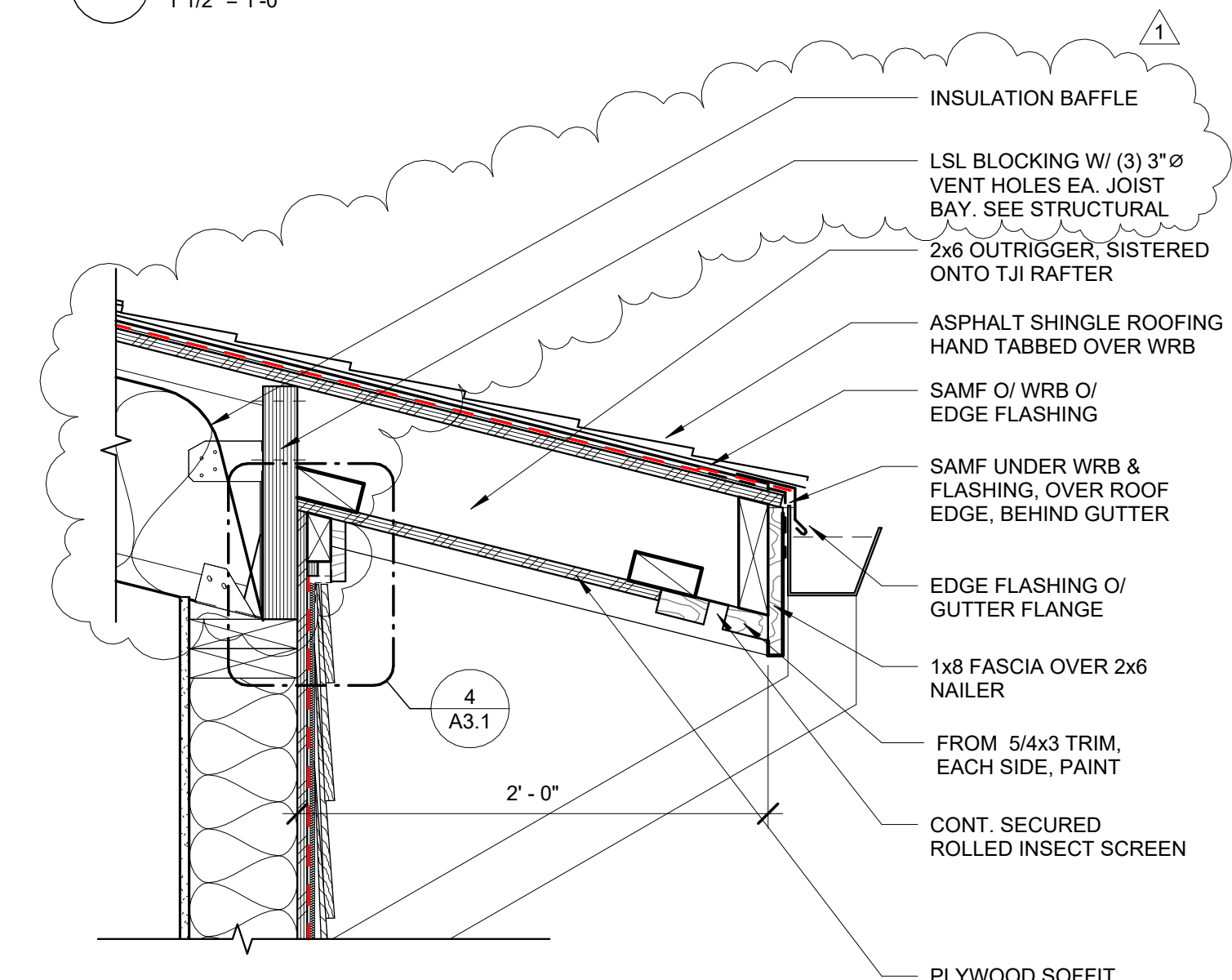
5 PORCH ROOF TO WALL TRANSITION
1 1/2" = 1'-0"



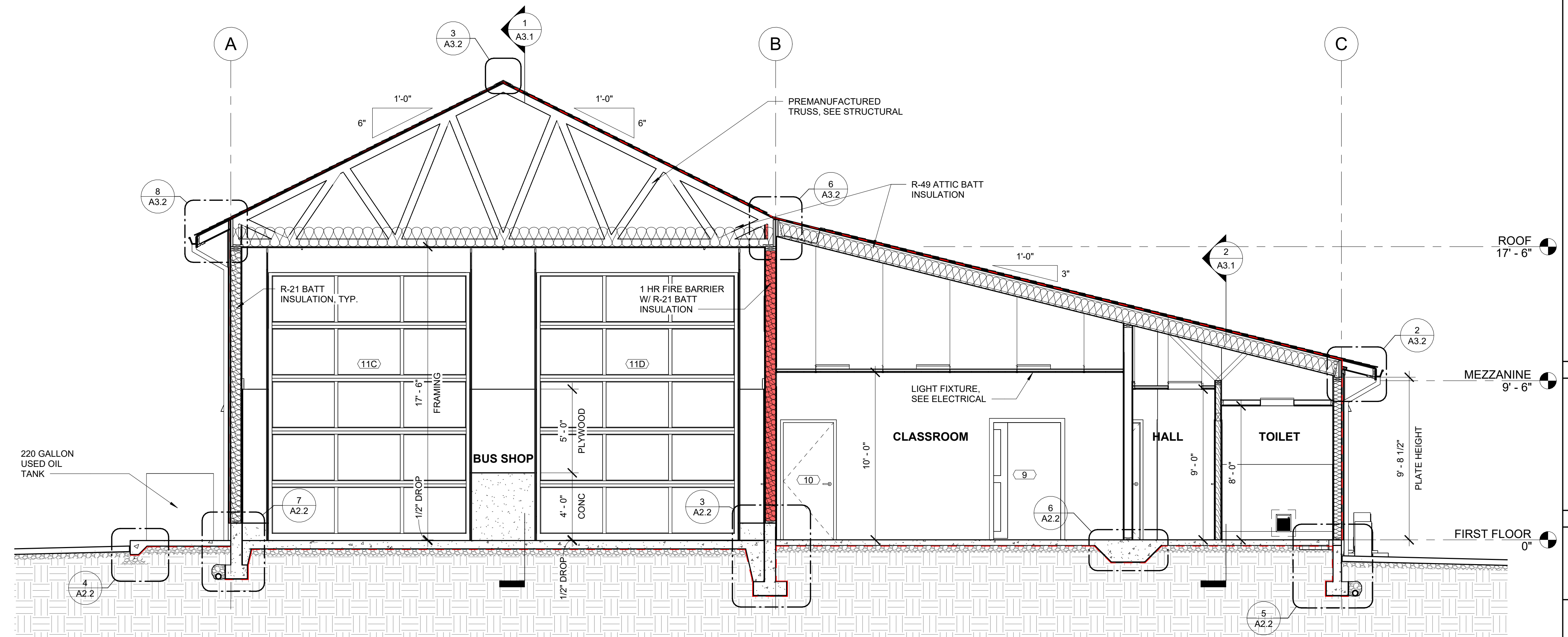
4 ROOF EAVE @ COVERED PORCH
1 1/2" = 1'-0"



3 ROOF RIDGE VENT
1 1/2" = 1'-0"



2 TYPICAL ROOF EAVE
1 1/2" = 1'-0"



1 N-S SECTION @ BUS SHOP / CLASSROOM / HALL / TOILET
1/4" = 1'-0"

CONSTRUCTION

#	DATE	DESCRIPTION
1	2/22/24	ADDENDUM #1

DATE: FEBRUARY 2024

SHEET TITLE:
BUILDING SECTIONS & DETAILS

A3.2

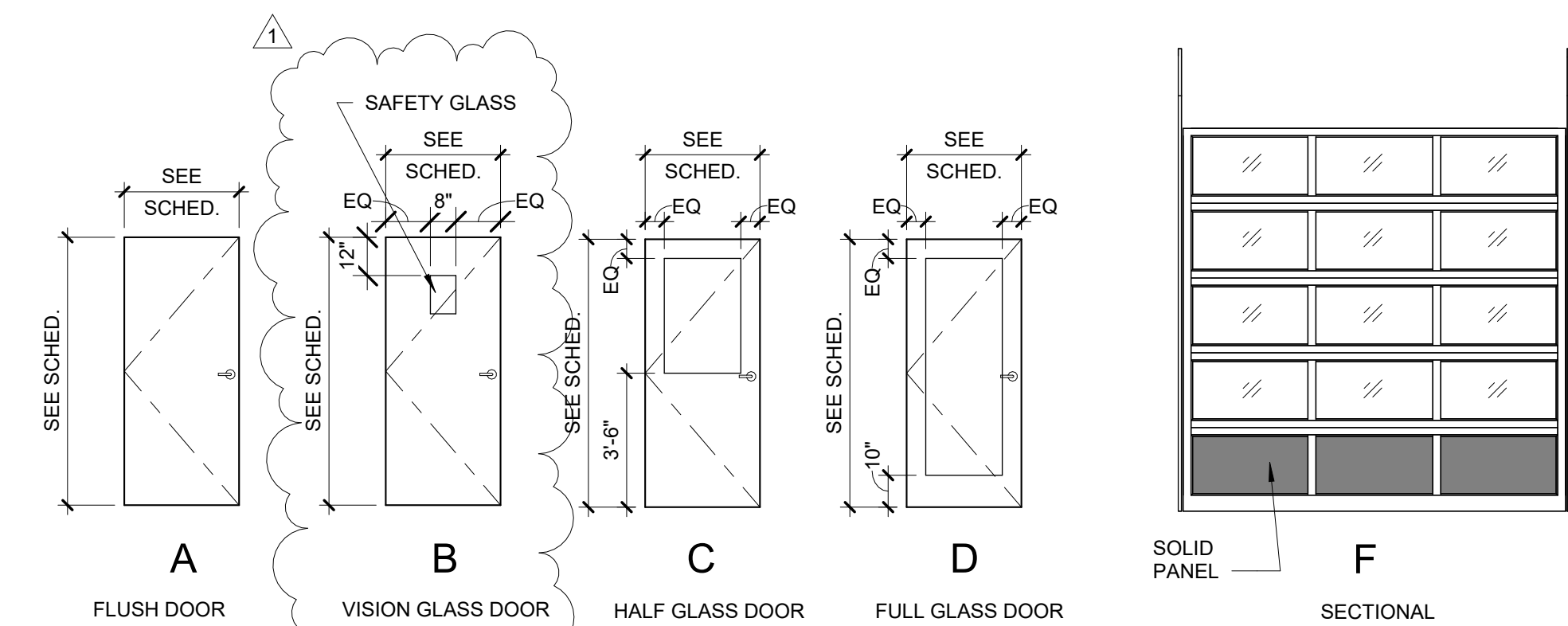
ROOM FINISH SCHEDULE									
ROOM NAME	ROOM NO.	FLOOR FINISH	BASE	NORTH WALL	EAST WALL	SOUTH WALL	WEST WALL	CEILING FINISH	NOTES
HALL	1	SC	RB	GWB	GWB	GWB	GWB	ACT	
SHOP OFFICE	2	SC	RB	GWB	GWB	GWB	GWB	GWB	
TECH.	3	SC	RB	GWB	GWB	GWB	GWB	GWB	
OFFICE	4	SC	RB	GWB	GWB	GWB	GWB	GWB	
CUST.	5	SC	RB	GWB / WP	GWB / WP	GWB / WP	GWB / WP	GWB	
TOILET	6	SC	RB	GWB / WP	GWB / WP	GWB / WP	GWB / WP	GWB	
TOILET	7	SC	RB	GWB / WP	GWB / WP	GWB / WP	GWB / WP	GWB	
BREAK ROOM	8	SC	RB	GWB	GWB	GWB	GWB	ACT	
CLASSROOM	9	SC	RB	GWB	GWB	GWB	GWB	ACT	
STORAGE	10	SC	RB	GWB	GWB	GWB	GWB	GWB	
BUS SHOP	11	SC	SC	GWB / PLYWD	GWB / PLYWD	GWB / PLYWD	GWB / PLYWD	GWB	
PARTS	12	SC	SC	GWB	GWB	GWB	GWB	GWB	
ELEC. / DATA	13	SC	SC	GWB	GWB	GWB	GWB	GWB	
MEZZANINE	14	SC	RB	GWB	GWB	GWB	GWB	GWB	

ROOM FINISH LEGEND

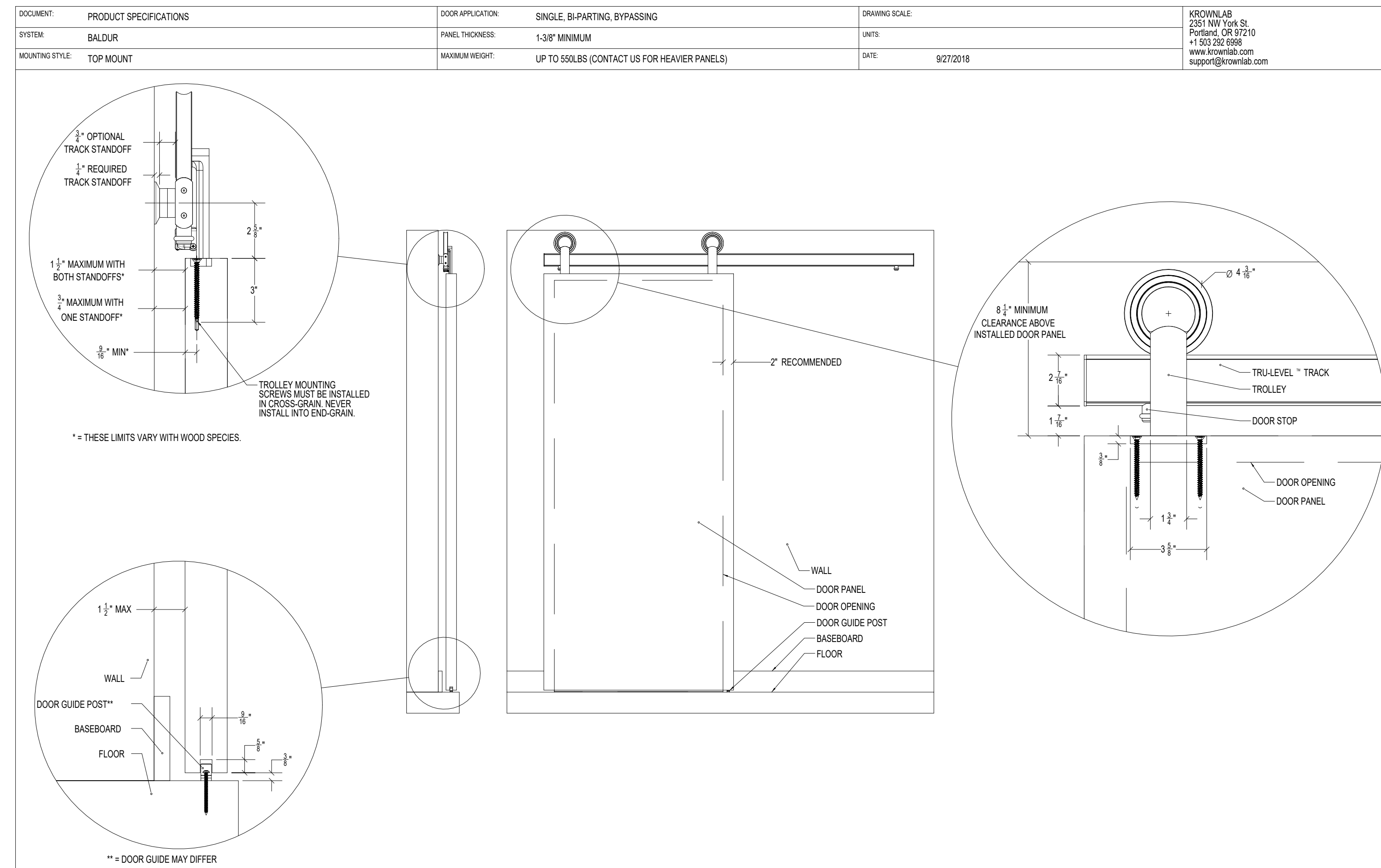
ACT - ACOUSTICAL CEILING TILE
WP - WALL PROTECTION
GWB - GYPSUM WALL BOARD
RB - RESILIENT BASE
SC - SEALED CONCRETE
-- NO WORK (UNO)
SEE REFLECTED CEILING PLANS FOR CEILING HEIGHTS

WINDOW SCHEDULE				
MARK	SIZE (WxH)	COUNT	TYPE	NOTES
A	4' - 0" x 3' - 6"	8	SINGLE HUNG W/ INSECT SCREEN	
B	3' - 6" x 3' - 6"	4	FIXED	

DOOR SCHEDULE								
DOOR NO.	ROOM NAME	SIZE (WxH)	TYPE	DOOR MATERIAL	FRAME MATERIAL	HARDWARE GROUP	RATING	NOTES
1A	HALL	3' - 0" x 7' - 0"	C	HM / GL	HM	HW-58		EXTERIOR DOOR, FUTURE ACCESS CONTROL
1B	BUS SHOP	3' - 0" x 7' - 0"	B	WD / GL	HM	HW-20F	1 HR	
2	BUS SHOP	3' - 0" x 7' - 0"	B	WD / GL	HM	HW-20F	1 HR	
3	TECH.	3' - 0" x 7' - 0"	C	WD / GL	HM	HW-10		
4	OFFICE	3' - 0" x 7' - 0"	C	WD / GL	HM	HW-10		
5	CUST.	3' - 0" x 7' - 0"	A	WD	HM	HW-20		
6	TOILET	3' - 0" x 7' - 0"	A	WD	HM	HW-5		
7	TOILET	3' - 0" x 7' - 0"	A	WD	HM	HW-5		
8A	BREAK ROOM	3' - 0" x 7' - 0"	C	WD / GL	HM	HW-2		
8B	BREAK ROOM	3' - 0" x 7' - 0"	A	WD	HM	HW-9		
9	CLASSROOM	4' - 0" x 7' - 0"	A	WD	MANUF.	HW-SL-20		BARN DOOR, 4'-4" ACTUAL DOOR LEAF WIDTH
10	STORAGE	3' - 0" x 7' - 0"	A	WD	HM	HW-20		
11A	BUS SHOP	3' - 0" x 7' - 0"	C	HM / GL	HM	HW-58		EXTERIOR DOOR, FUTURE ACCESS CONTROL
11B	BUS SHOP	3' - 0" x 7' - 0"	C	HM	HM	HW-11		EXTERIOR DOOR
11C	BUS SHOP	12' - 0" x 16' - 0"	F	MANUF.	MANUF.	-		OVERHEAD DOOR
11D	BUS SHOP	12' - 0" x 16' - 0"	F	MANUF.	MANUF.	-		OVERHEAD DOOR
13	ELEC. / DATA	3' - 0" x 7' - 0"	A	WD	HM	HW-2		



DOOR TYPES
1/4" = 1'-0"



ALL INFORMATION CONTAINED IN THIS DOCUMENT IS THE PROPERTY OF KROWNLAB. ANY REPRODUCTION IN WHOLE OR IN PART IS PROHIBITED WITHOUT PRIOR WRITTEN CONSENT. KROWNLAB AND THE KROWNLAB LOGO ARE REGISTERED TRADEMARKS OF KROWNLAB, INC.

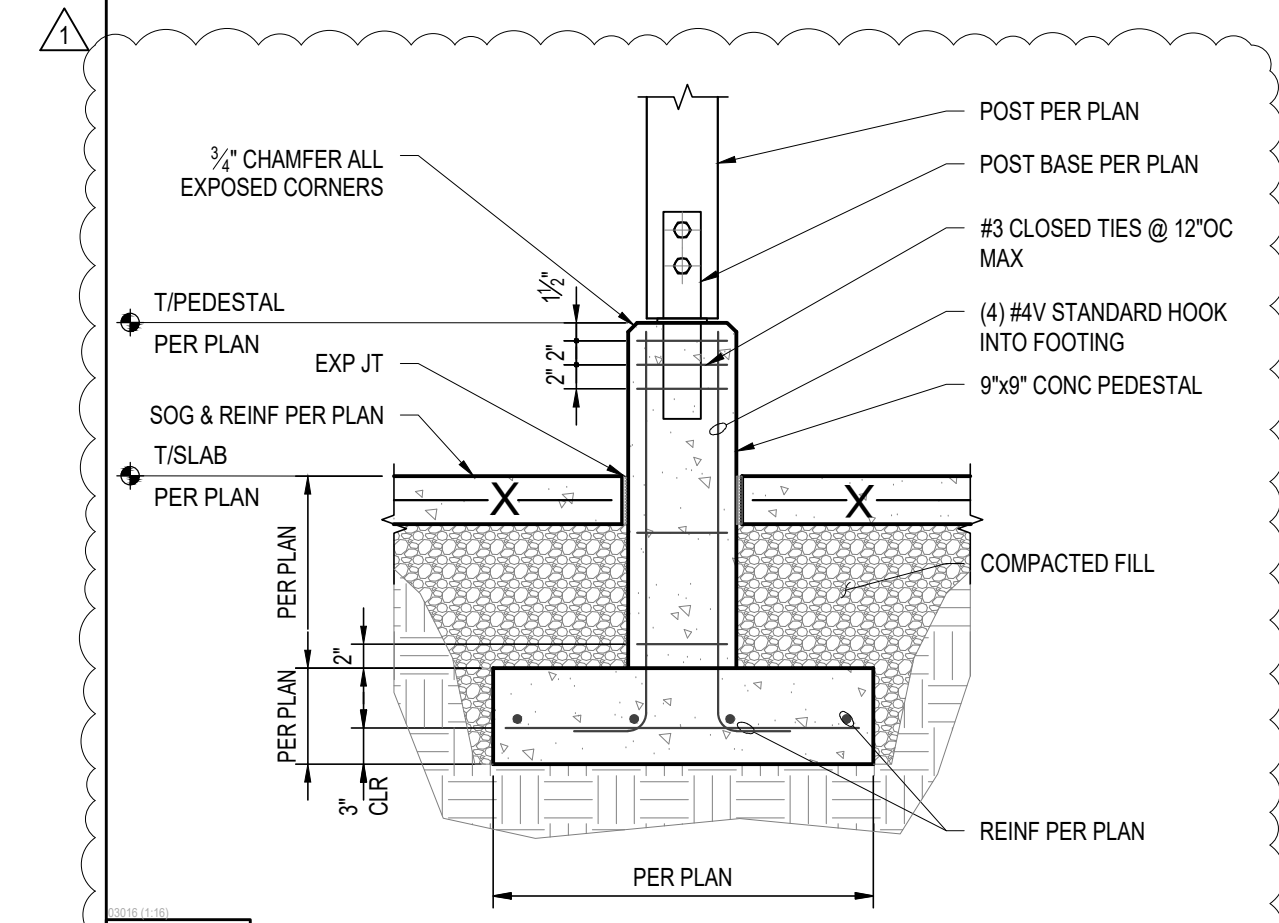
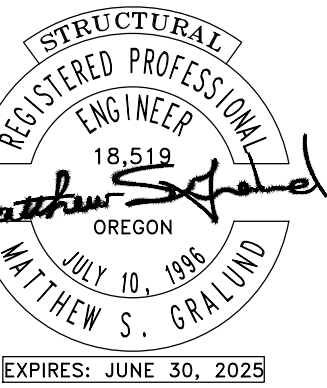
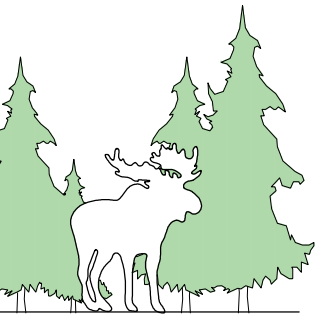
1 BARN DOOR DETAIL
3" = 1'-0"

CONSTRUCTION

REVISIONS:	
#	DATE DESCRIPTION
1	2/22/24 ADDENDUM #1

DATE: FEBRUARY 2024

SHEET TITLE:
SCHEDULES

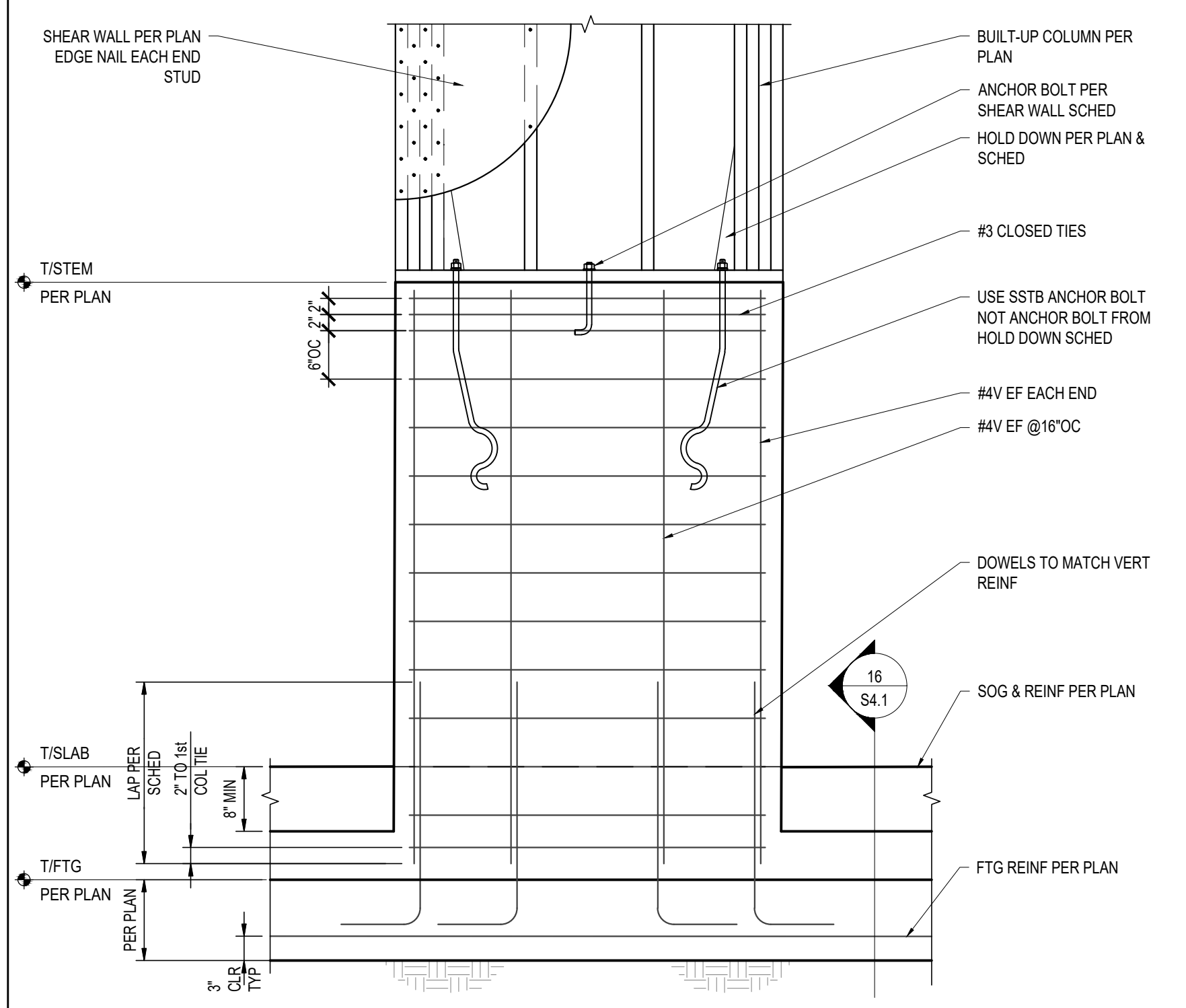


4 EXTERIOR WOOD POST FOOTING ON CONCRETE PEDESTAL
SCALE: 3/4"=1'-0"

REINF SIZE	MISC BARS		TOP BARS (see note #5)		HOOKED BARS
	Ld	Splice	Ld	Splice	
fc = 3000psi, fy = 40 ksi					
#3	12	16	15	19	6
#4	15	19	19	25	8
#5	19	24	24	31	10
fc = 3000psi, fy = 60 ksi					
#3	17	23	22	29	9
#4	22	29	29	38	11
#5	28	37	36	47	14
#6	33	43	43	56	17
#7	48	63	63	82	20
#8	55	72	72	94	22
#9	62	81	81	106	25
#10	70	91	91	119	28
#11	78	102	101	132	31

- NOTES:**
- VALUES FOR UNCOATED REINFORCING AND NORMAL WEIGHT CONCRETE WITH CLEAR SPACING > db, CLEAR COVER > db AND MINIMUM STIRRUPS OR TIES THROUGHOUT Ld OR CLEAR SPACING > 2db AND CLEAR COVER > db.
 - REINFORCEMENT STRENGTH Fy=60 KSI FOR ALL BARS LARGER THAN #5. 40 KSI STRENGTH REINFORCEMENT FOR ONLY FOR TIES AND STIRRUPS, NOT USED IN BEAMS, COLUMNS, OR SLABS UNLESS NOTED ON PLANS.
 - DEVELOP ALL REINFORCING IN STRUCTURAL SLABS WITH MINIMUM DEVELOPMENT LENGTH Ld.
 - Ldh = DEVELOPMENT LENGTH OF BAR WITH STANDARD HOOK.
 - TOP BAR = HORIZONTAL BAR WITH MORE THAN 12" OF FRESH CONCRETE BELOW (EXCLUDING WALL HORIZONTAL REINFORCING) OR AS NOTED ON DOCUMENTS AS "TOP BAR".
 - ALL TABULATED VALUES ARE IN INCHES.
 - COLUMN VERTICAL REINFORCING LAP SPLICE SCHEDULE PER [1302]
 - SHEAR WALL REINFORCING LAP SPLICE SCHEDULE PER [1304].
 - MOMENT FRAME REINFORCING LAP SPLICE SCHEDULE PER [1305].

3 TYPICAL LAP SPLICE AND DEVELOPMENT LENGTH SCHEDULE
SCALE: NONE



1 EXTERIOR CONCRETE PIER WITH SHEAR WALL ABOVE
SCALE: 3/4"=1'-0"

PROJECT NO.: 22-97
BUS MAINTENANCE BUILDING
COQUILLE SCHOOL DISTRICT
W CENTRAL BLVD
COQUILLE, OREGON

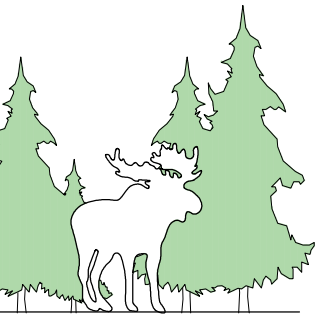
CONSTRUCTION

#	DATE	DESCRIPTION
1	02/22/24	ADDENDUM 1

DATE: JANUARY 2024

SHEET TITLE:
FOUNDATION DETAILS

S4.2



CONSTRUCTION

REVISIONS:	#	DATE	DESCRIPTION
	1	02/22/24	ADDENDUM 1

DATE: JANUARY 2024

SHEET TITLE:
FRMAING DETAILS

S6.1

