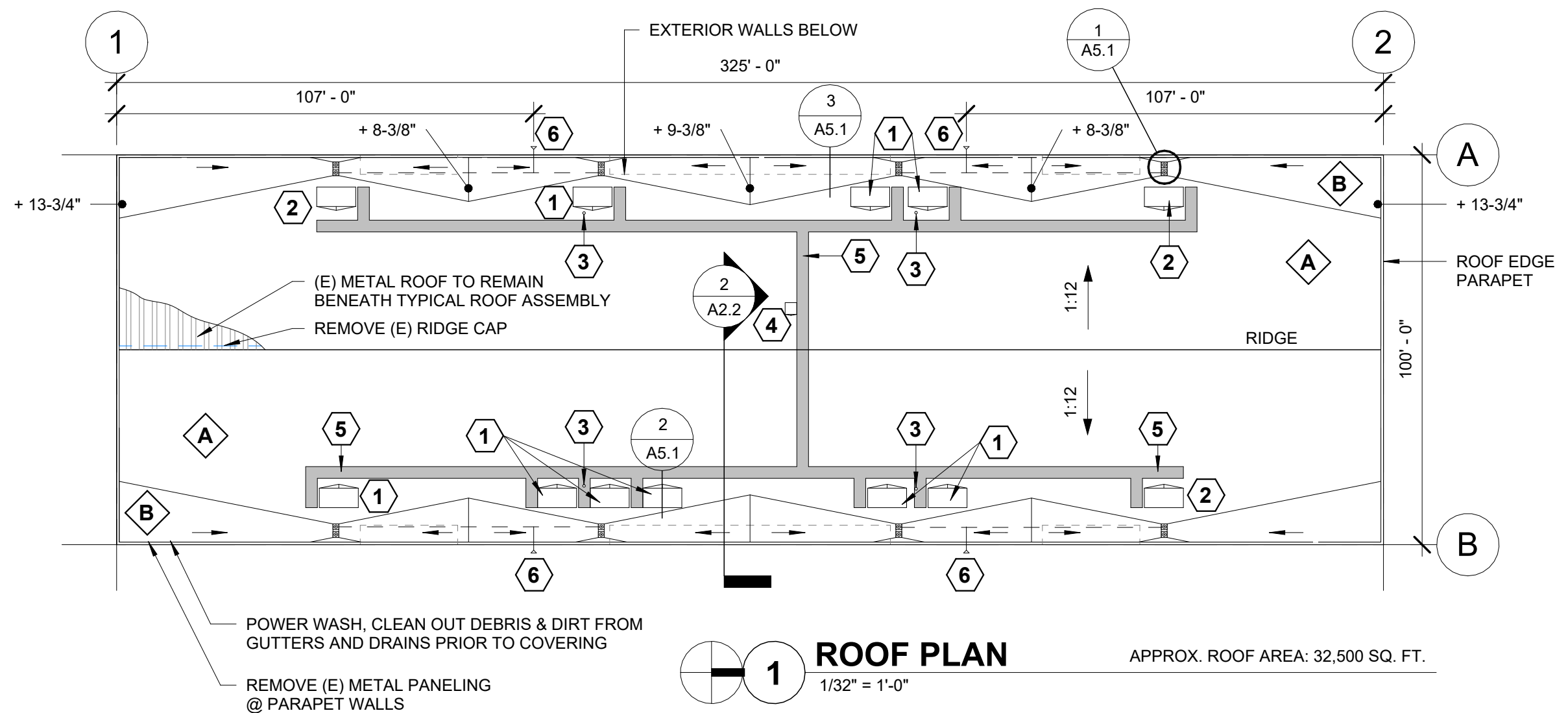


# SEASCAPE REGIONAL CENTER REROOF

98158 W BENHAM LN, BROOKINGS, OREGON

## SHEET INDEX

A2.1	ROOF PLAN
A2.2	ROOF PURLINS
A5.1	ROOF DETAILS
A5.2	ROOF DETAILS



**1** **ROOF PLAN**  
1/32" = 1'-0"

APPROX. ROOF AREA: 32,500 SQ. FT.

- POWER WASH, CLEAN OUT DEBRIS & DIRT FROM GUTTERS AND DRAINS PRIOR TO COVERING
- REMOVE (E) METAL PANELING @ PARAPET WALLS

**KEYNOTES:**

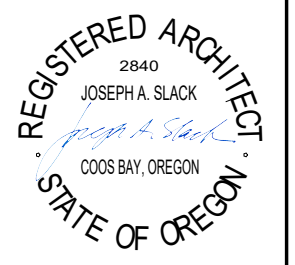
1. CURB-MOUNTED PLATFORM W/ ROOF CRICKET. MECHANICAL EQUIPMENT NOT IN CONTRACT; OWNER TO RELOCATE MECHANICAL EQUIPMENT AND EXTEND CONNECTIONS. COORDINATE W/ OWNER'S HVAC CONTRACTOR TO ENSURE PROPER SEQUENCING. VERIFY SIZE REQUIRED FOR EQUIPMENT.
2. CURB-MOUNTED PLATFORM W/ ROOF CRICKET FOR FUTURE MECHANICAL EQUIPMENT.
3. PROVIDE SINGLE-PLY BOOT AT (E) PLUMBING VENTS. VERIFY QUANTITY.
4. EXISTING ROOF HATCH TO REMAIN. REMOVE AND REINSTALL TO FACILITATE WORK. ADD ROOF CRICKET.
5. ROOF WALKWAY PROTECTION PADS. CONFIRM HVAC SERVICE LOCATIONS & ADJUST WALKWAY PAD LOCATIONS AS NEEDED.
6. CONNECT (2) OVERFLOW DRAINS TO (1) OVERFLOW DOWNSPOUT "COW'S TONGUE" NOZZLE AS SHOWN. OPEN UP (E) WALL, PATCH BACK GYP. BD., PAINT TO MATCH. COMPLY WITH PLUMBING CODE.

**ROOF ASSEMBLIES:**

- A. **TYPICAL ROOF ASSEMBLY**
  - MECHANICALLY-FASTENED SINGLE-PLY ROOF MEMBRANE
  - 1/2" ROOF COVER BOARD
  - 1" BOARD INSULATION
  - SELF-ADHERED AIR & VAPOR BARRIER
  - 1/2" PLYWOOD SHEATHING
  - BATT INSULATION OVER (E) METAL ROOF
  - SUB-PURLINS OVER (E) METAL ROOF
- B. **ROOF ASSEMBLY @ TAPERED AREAS**
  - MECHANICALLY-FASTENED SINGLE-PLY ROOF MEMBRANE
  - 1/4" ROOF COVER BOARD
  - TAPERED BOARD INSULATION AT 1/4:12 MIN. SLOPE
  - SELF-ADHERED AIR & VAPOR BARRIER
  - 1/2" PLYWOOD SHEATHING
  - BATT INSULATION OVER (E) METAL ROOF
  - SUB-PURLINS OVER (E) METAL ROOF



333 S. 4TH STREET  
COOS BAY, OR 97420  
P: 541.269.1166  
general@hge1.com  
www.hge1.com



PROJECT NO.: 23.60

**SEASCAPE REGIONAL CENTER REROOF**

98158 W BENHAM LN  
BROOKINGS, OR 97415

**CONSTRUCTION**

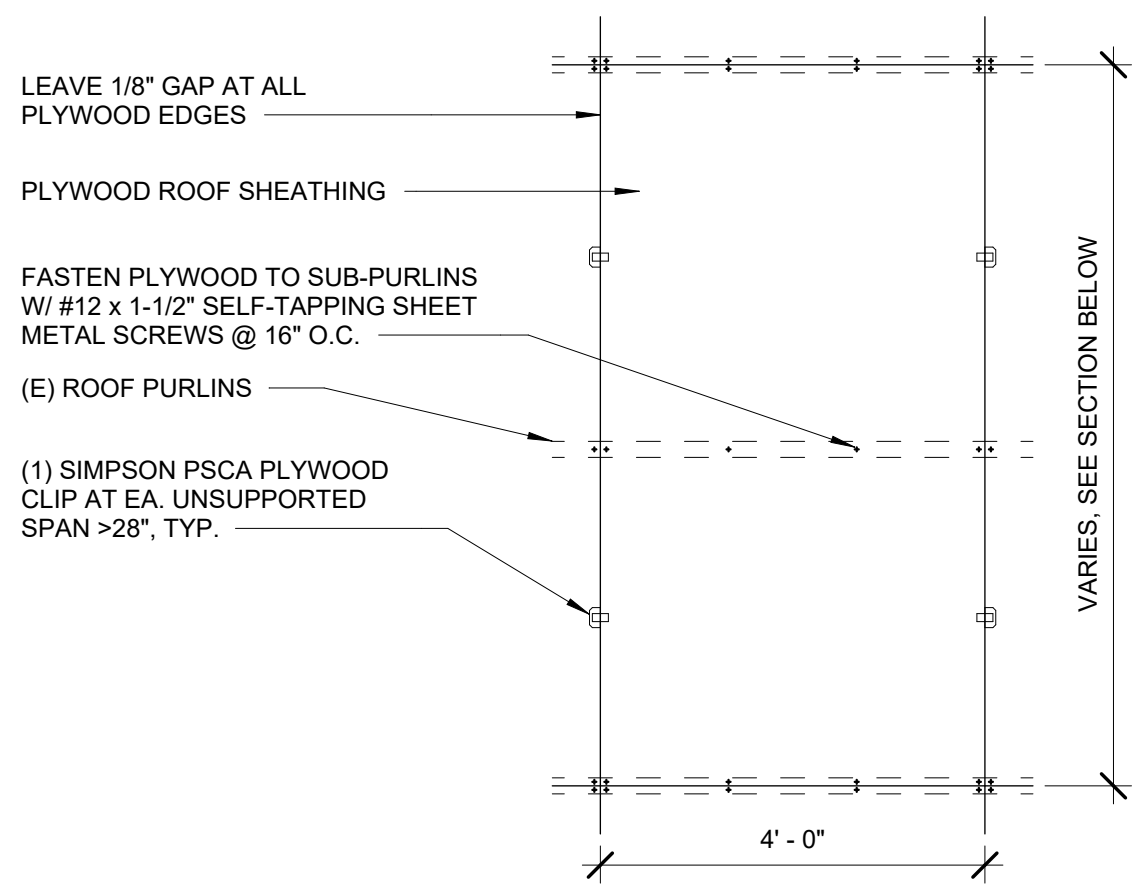
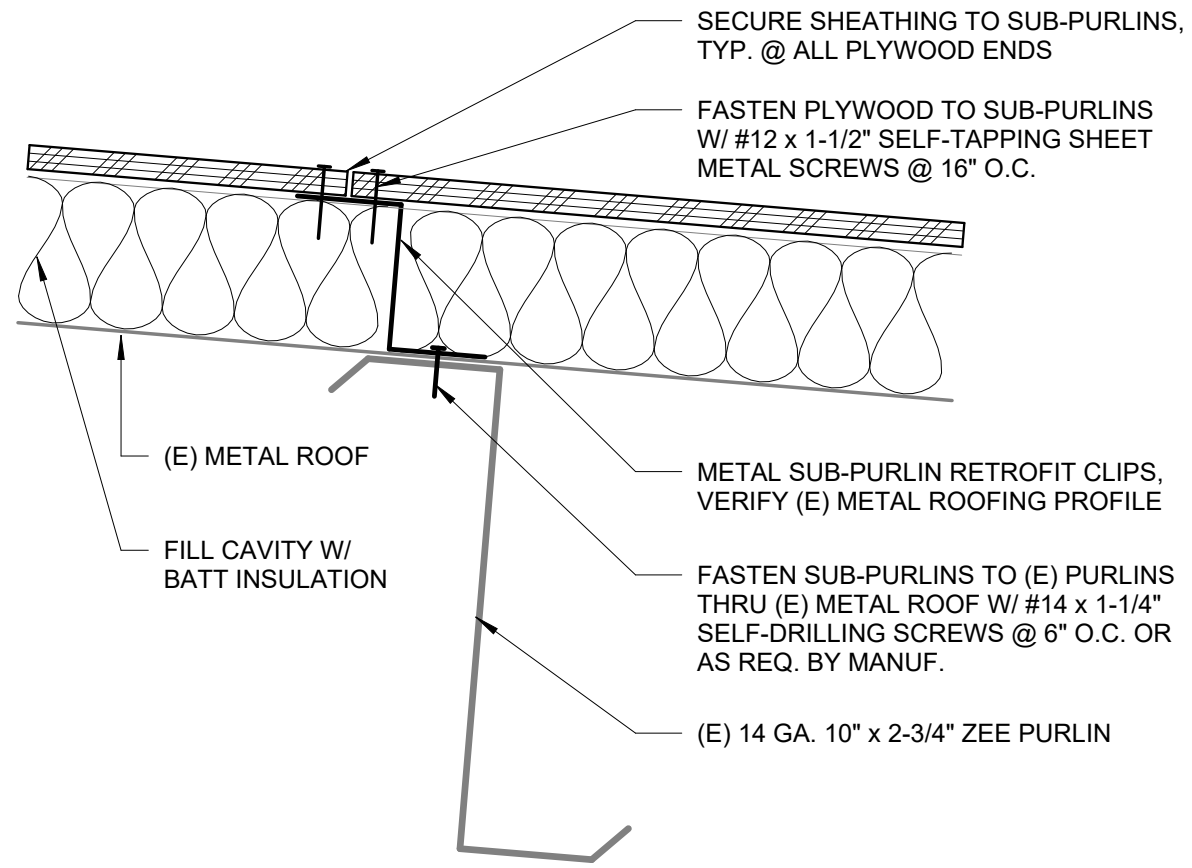
REVISIONS:  
# DATE DESCR.

DATE: JAN. 2024

SHEET TITLE:  
**ROOF PLAN**

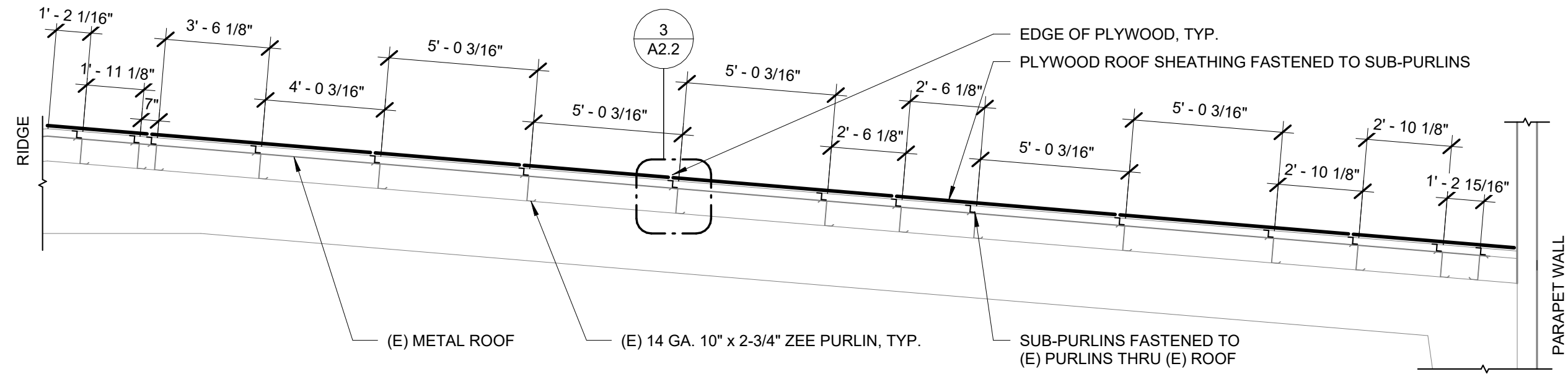
**A2.1**

Copyright © 2024,  
HGE ARCHITECTS, Inc.



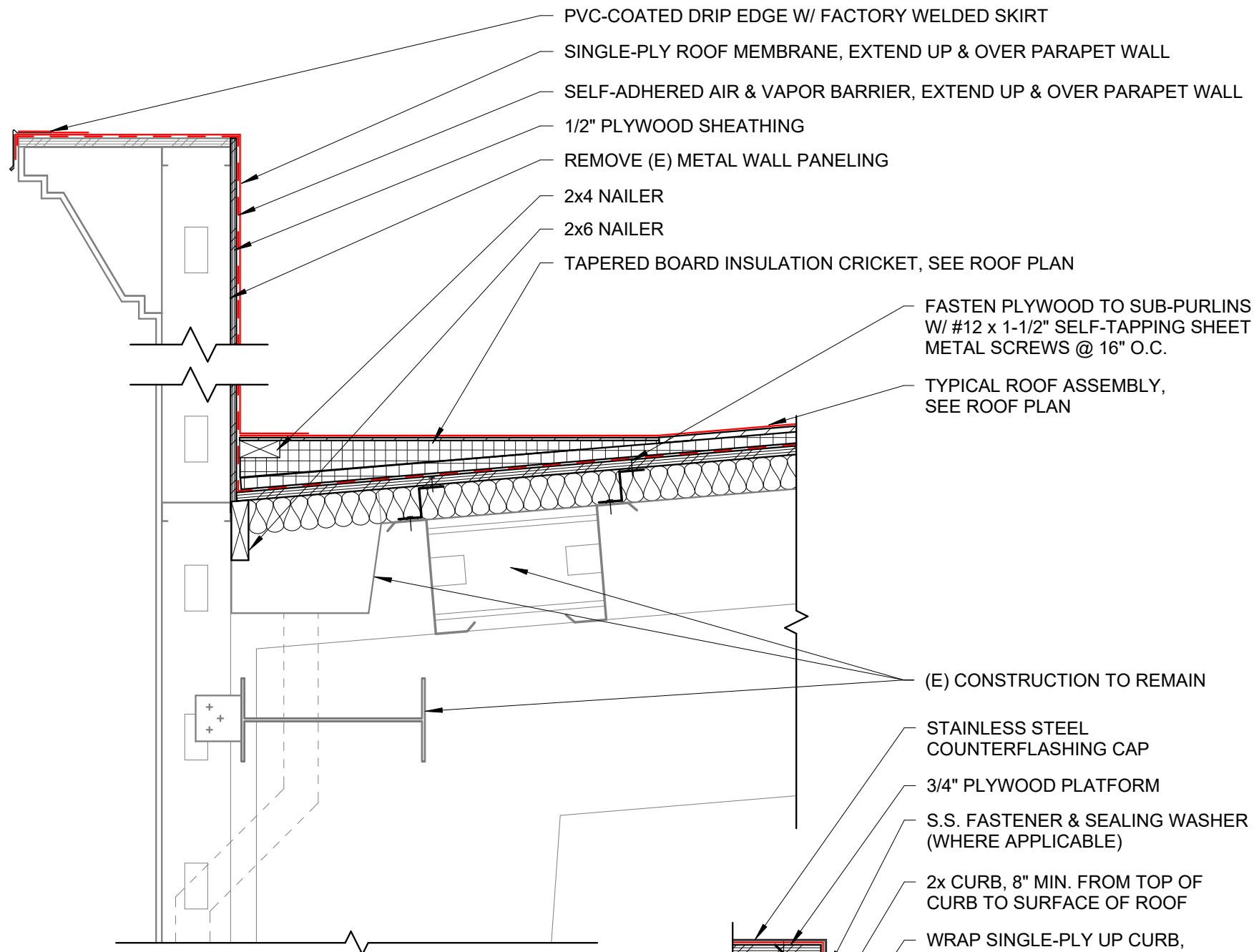
**3 TYP. FASTENERS**  
3" = 1'-0"

**1 TYP. PLYWOOD NAILING PATTERN**  
1/2" = 1'-0"



**2 SECTION - PURLINS & SUB-PURLINS**  
1/4" = 1'-0"

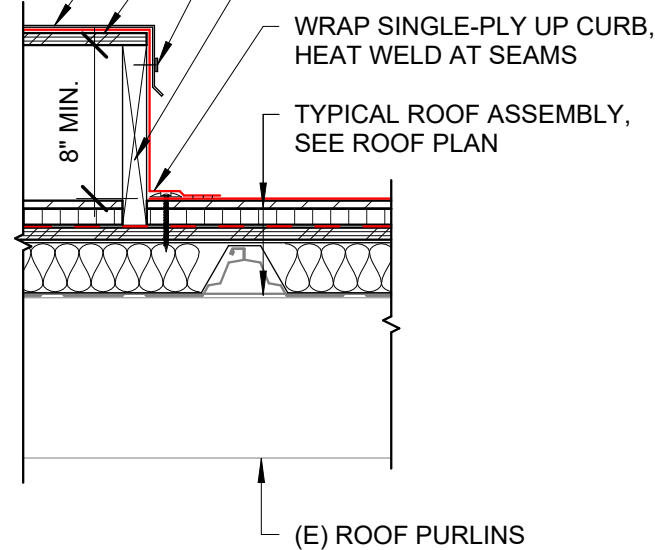
- NOTES:**
- CUT PLYWOOD TO ENSURE CONTACT W/ AT LEAST (2) SUB-PURLINS PER SHEET, TYPICAL.
  - MINIMIZE WASTE AS MUCH AS POSSIBLE.
  - COMPLETE ROOF ASSEMBLY NOT SHOWN FOR CLARITY. SEE ROOF PLAN & DETAILS FOR MORE.



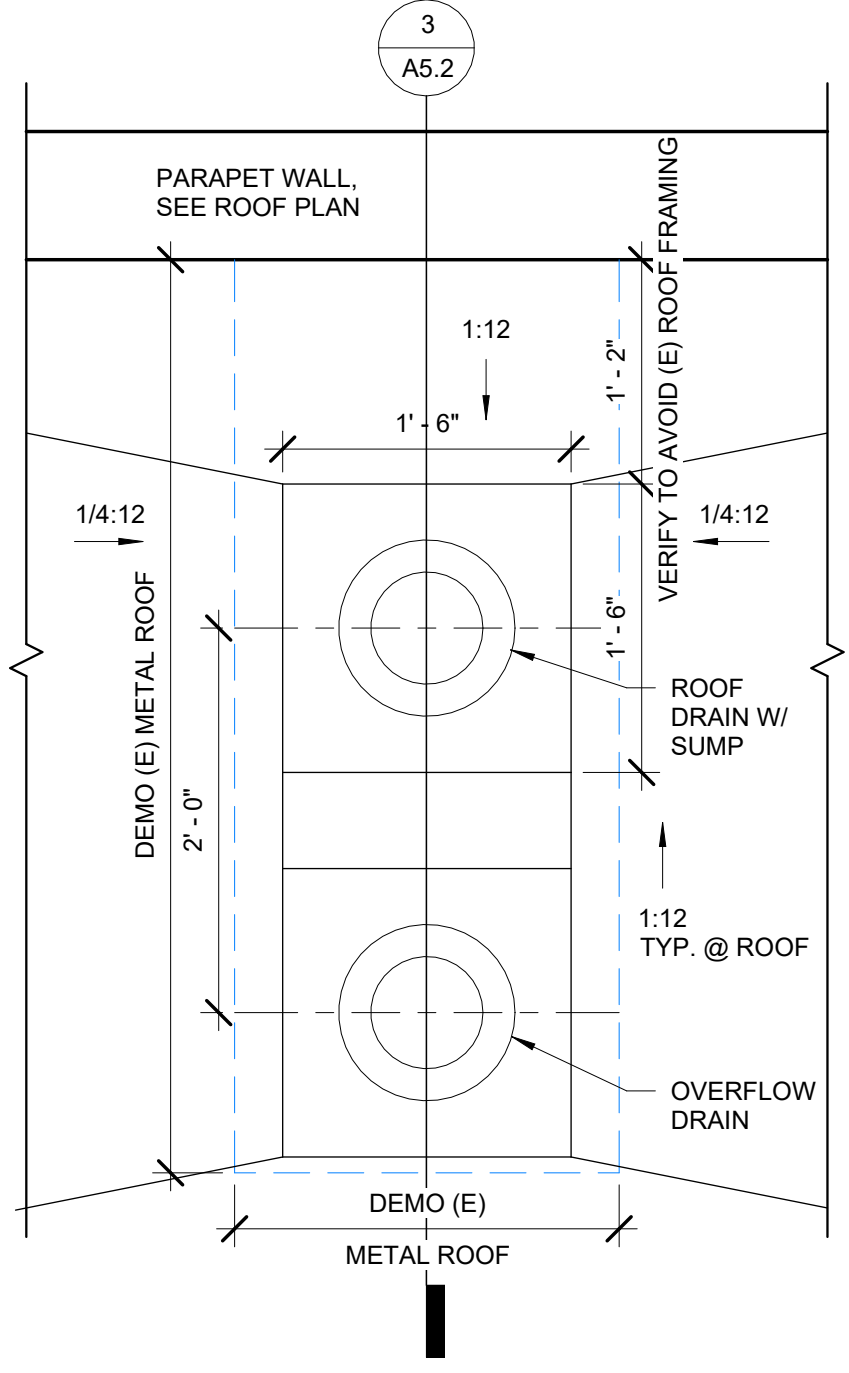
- PVC-COATED DRIP EDGE W/ FACTORY WELDED SKIRT
- SINGLE-PLY ROOF MEMBRANE, EXTEND UP & OVER PARAPET WALL
- SELF-ADHERED AIR & VAPOR BARRIER, EXTEND UP & OVER PARAPET WALL
- 1/2" PLYWOOD SHEATHING
- REMOVE (E) METAL WALL PANELING
- 2x4 NAILER
- 2x6 NAILER
- TAPERED BOARD INSULATION CRICKET, SEE ROOF PLAN

- FASTEN PLYWOOD TO SUB-PURLINS W/ #12 x 1-1/2" SELF-TAPPING SHEET METAL SCREWS @ 16" O.C.
- TYPICAL ROOF ASSEMBLY, SEE ROOF PLAN

- (E) CONSTRUCTION TO REMAIN
- STAINLESS STEEL COUNTERFLASHING CAP
- 3/4" PLYWOOD PLATFORM
- S.S. FASTENER & SEALING WASHER (WHERE APPLICABLE)
- 2x CURB, 8" MIN. FROM TOP OF CURB TO SURFACE OF ROOF
- WRAP SINGLE-PLY UP CURB, HEAT WELD AT SEAMS



**2** ROOF CURB  
1" = 1'-0"



**1** ROOF DRAIN PLAN  
1" = 1'-0"

**3** ROOF-WALL JUNCTURE  
1" = 1'-0"

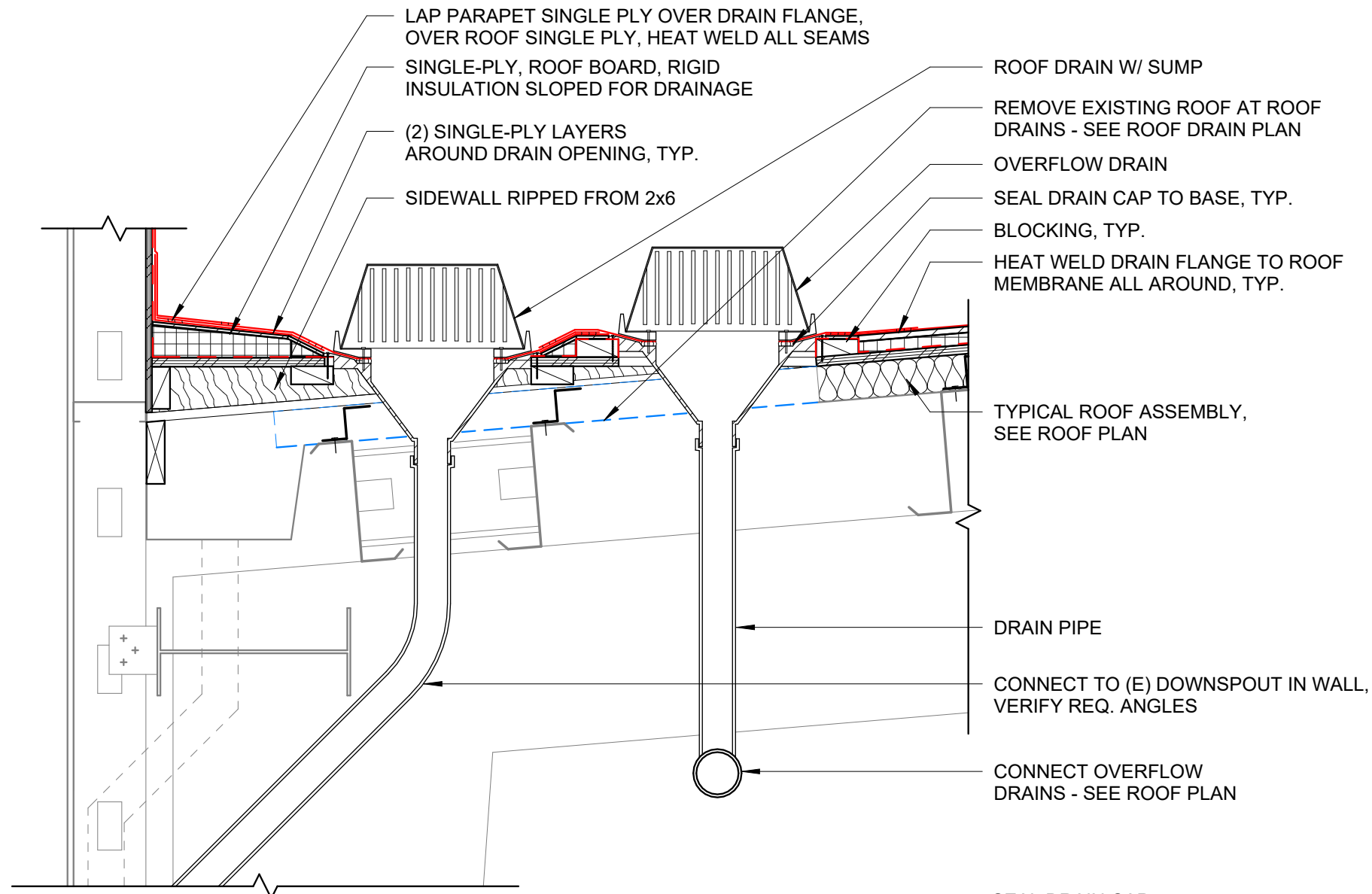
**CONSTRUCTION**

REVISIONS:	#	DATE	DESCR.

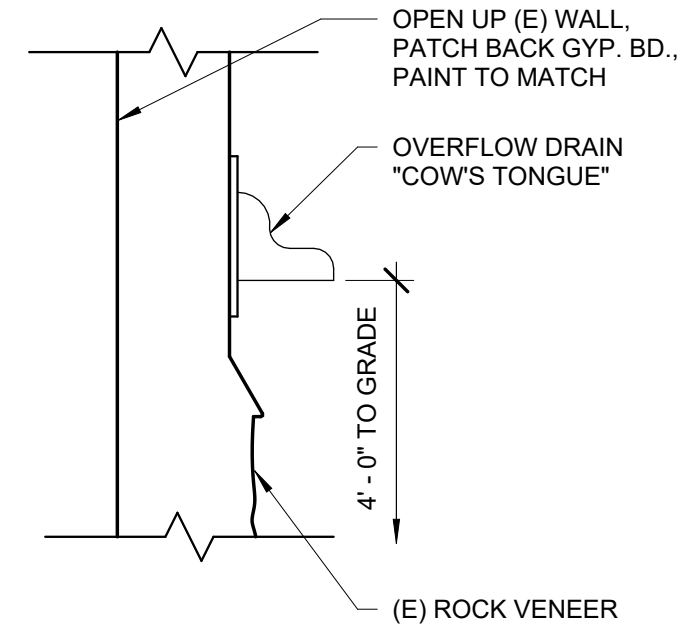
DATE: JAN. 2024

SHEET TITLE:  
**ROOF DETAILS**

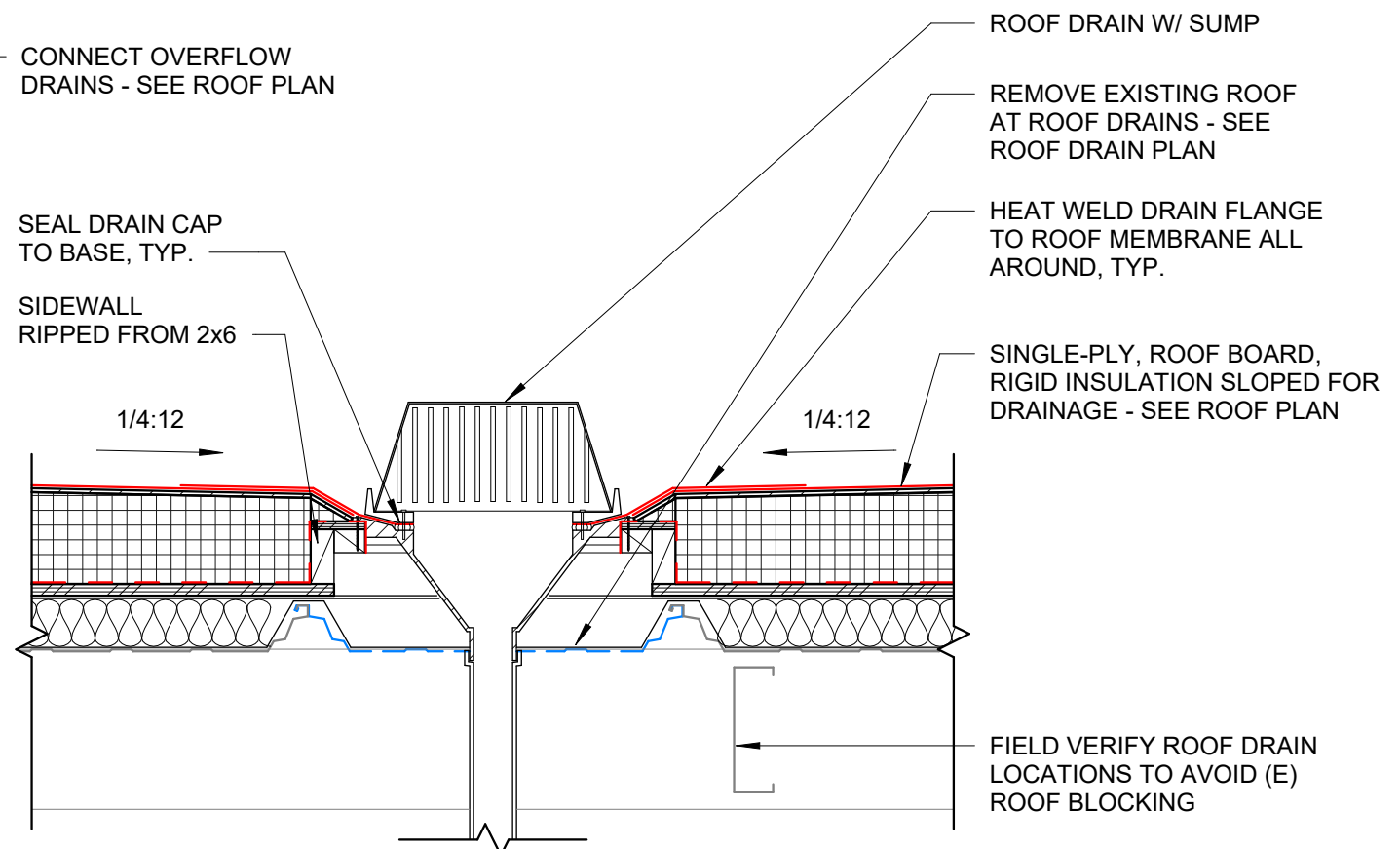
**A5.1**



**3** ROOF DRAIN LONGITUDINAL SECTION  
1" = 1'-0"



**1** OVERFLOW DRAIN SPOUT  
1" = 1'-0"



**2** ROOF DRAIN CROSS SECTION  
1" = 1'-0"