

ADDENDUM #1 – AUGUST 9, 2023

RE: COQUILLE PUBLIC LIBRARY
Building Renovation and Addition
Project #22.37

FROM: HGE ARCHITECTS, Inc.
333 South 4th Street
Coos Bay, Oregon 97420
541-269-1166



TO: Prospective Bidders

This Addendum forms a part of the Contract Documents and modifies the original Documents dated July 2023, as noted below. Acknowledge receipt of this Addendum in the space provided on the Bid Form. Failure to do so may subject Bidder to disqualification.

This Addendum consists of **THREE (3)** page(s) together with the following attachments:

- **Specification Section 32-3300 Site Furnishings**
- **Sheet E1.1 Electrical Schedules**
- **Sheet E2.1 First Floor Lighting Plan**
- **Sheet E3.1 First Floor Power Plan**

CHANGES TO PROJECT MANUAL:

1. **Section 00-0110 Table of Contents**, Paragraph 2.19 Division 32 – Exterior Improvements. Add “G. 32-3300 Site Furnishings”
2. **Section 01-1000 Summary**, Paragraph 1.03 Work By Owner, B. Add Item “9. Asbestos Abatement”
3. **Section 02-2113 Instructions to Bidders**, Paragraph 5.01, C. Delete “Bidder is required to be licensed for asbestos abatement under ORS 468A.720.”
4. **Section 04-4200 Exterior Stone Cladding**, Paragraph 2.01, B.2. Color to be Dakota Mahogany. Add “4. Thickness: 2 cm”
5. **Section 08-7100 Door Hardware**, Paragraph 4.04, B.: HW-26 Existing Door-Motorized Operator
Item 1., Revise to read “Lockset – existing”
6. **Section 09-5153 Direct Applied Acoustical Ceilings**, 2.02, E. Perimeter Moldings
Add “Basic of Design: Fry Reglet, ‘J’ acoustical trim, #JAM-875”.

- 7. Section 32-3300 Site Furnishings.** Add Section in its entirety (bollards, flag pole, ADA site signage).

CHANGES TO DRAWINGS:

- 1. Sheet A-101 Site Plan**

At the East 3rd Street Sidewalk, add notes at north edge of site: "Existing power pole, see E1.0 for additional info." and "Contractor to saw cut conc. & trench for power and data conduit. Patch back to match. Refer to E1.0"

- 2. Sheet A-210 First Floor Plan – Demo, Sheet A-210 Foundation Plan, Sheet A-211 First Floor Plan, Sheet A-701 Schedules**

Delete Door B1B.

- 3. Sheet P-200 thru P-203**

Delete all notes regarding Alternate Bid for roofing, roof drains, and other associated work. All roofing, roof drains, overflow drains, flashing, and other associated work is all part of the Base Bid.

- 4. Sheet E1.0 Site Plan**

Revise Service Disconnect note from 800 amps to 600 amps.

- 5. Sheet E1.1 Electrical Schedules - Attached**

Light Fixture Schedule:

- Light fixture type C3/C8, Revise fixture Type Description to "Ceiling / wall corner linear LED"
- Light fixture type D6 Revise from Recessed Downlight to Wafer Downlight
- Light fixture type W8 Added

Panel "L1":

- Add circuit 29 to panel L1 for dedicated book drop cart.

Panel "L2":

- Revise Loads: Connected VA and Diversified VA

- 6. Sheet E2.1 First Floor Lighting Plan – Attached**

- Revise main light switch bank locations, from the right of the door into the Workroom to the left of the door. Stack the switch banks.
- On the North wall of Collections, Delete the central (4) W2 fixtures. Replace with (3) W8.

- 7. Sheet E3.0 Foundation Floor Power Plan**

- Revise Service Disconnect note from 800 amps to 600 amps.
- Revise Main Distribution Panel from 800 amps to 600 amps.

- 8. Sheet E3.1 First Floor Power Plan – Attached**

- a. Revise Service Disconnect note from 800 amps to 600 amps.
- b. Revise Main Distribution Panel from 800 amps to 600 amps.
- c. Add floorbox to existing circuit near front entry
- d. Relocate receptacles & Data in Director's Office. Added data drop.
- e. Relocate receptacle for dedicated book drop cart to the left of the Work Room door.
- f. Delete work related to "Book Security Scanner".

SUBSTITUTION APPROVALS:

<u>SPECIFIED SECTION</u>	<u>SPECIFIED ITEM</u>	<u>APPROVED</u>
07-5400 Thermoplastic Membrane Roofing	PVC Single Ply Roofing	Soprema Sentinel P-150 60 mil PVC membrane
07-5400 Thermoplastic Membrane Roofing	Fully Adhered Parapet Flashings	Duro-Last Roofing Mechanically Fastened Systems, Parapet Flashing
09-3000 Tiling	Mortar materials, Grouts	Ardex Americas
26-5100 Lighting	Type D6 Luminaire	Elite – RL675 - 6" round Slim LED
26-5100 Lighting	Type D9S Luminaire	Kenall – Millenium Square, MS11 Low Profile Housing
26-5100 Lighting	Type FP4 Luminaire	Day-Brite – Recessed Backlit Panel
26-5100 Lighting	Type L4, L6 & L8 Luminaire	HE Williams – Slimline Architectural
26-5100 Lighting	Type S8 Luminaire	Focal Point – Seem 4 - suspended
26-5100 Lighting	Type W2 Luminaire	Teka – Beacon wall mount – 18" arm
26-5100 Lighting	Type W8 Luminaire	Focal Point – Seem 4 – wall mount
26-5100 Lighting	Type P12 Luminaire	Lightolier – RD Series - Deco Pendants

END OF ADDENDUM #1

**SECTION 32-3300
SITE FURNISHINGS**

PART 1 GENERAL

1.01 SECTION INCLUDES

- A. Bollards.
- B. Flag pole.
- C. ADA site signage.

1.02 RELATED REQUIREMENTS

- A. Section 03-3000 - Cast-in-Place Concrete: Bollard infill and underground encasement.

1.03 REFERENCE STANDARDS

- A. ASTM A53/A53M - Standard Specification for Pipe, Steel, Black and Hot-Dipped, Zinc-Coated, Welded and Seamless 2012.

1.04 SUBMITTALS

- A. See Section 01-3000 - Administrative Requirements, for submittal procedures.
- B. Product Data: Provide manufacturer's specifications and descriptive literature, installation instructions, and maintenance information.

PART 2 PRODUCTS

2.01 MANUFACTURERS

- A. Metal Furnishings:
 - 1. SiteScapes, Inc: www.sitescapesonline.com/#sle.
 - 2. Substitutions: See Section 01-6000 - Product Requirements.
- B. Steel Pipe Bollards:
 - 1. Reliance Foundry Co. LTD.; www.reliance-foundry.com.
 - 2. Substitutions: See Section 01-6000 - Product Requirements.

2.02 PERFORATED STEEL SQUARE TUBE SIGN SUPPORTS

- A. 2" x 2" Square Sign Posts.
- B. 2.25" x 2.25" x 0.105", 12 gauge, galvanized steel finish. Holes at 1-inch on center, on all four sides.

2.03 TYPE OF SIGNS

- A. ADA Parking R7-8, two (2) each required.

1. White, retroreflective sheeting (background).
 2. Green, retroreflective sheeting (legend).
 3. White on blue, retroreflective sheeting (symbol).
 4. Sign blank - sheet aluminum.
 5. Size: 12" X 18", handicap reserved parking.
- B. Van Accessible R7-8P, one (1) each required.
1. White, retroreflective sheeting (background).
 2. Green, retroreflective sheeting (legend).
 3. Sign blank - sheet aluminum.
 4. Size: 18" X 9", van accessible.
- C. Stop R1-1, one (1) each required.
1. Red, retroreflective sheeting (background).
 2. White, retroreflective sheeting (legend).
 3. Sign blank - sheet metal.
 4. Size: 30"x30".
- D. Materials for signs shall conform to ODOT/APWA, Section 02910 of the Standard Specification for Construction, 2018 Edition, or current.

2.04 BOLLARDS

- A. Crash-rated Steel Pipe Bollards: Hollow steel pipe with rings.
1. Shape: Round.
 2. Diameter: 4 inches.
 3. Height Above Grade: 36 inches.
 4. Depth Below Grade: 30 inches.
 5. Materials:
 - a. Steel Pipe: ASTM A53/A53M, standard weight.
 - b. Factory Finish: Powder coated.
 - c. Color: As selected by Architect from manufacturer's standard range.
 6. Mounting: In-ground.
 7. Products:
 - a. Reliance Foundry Co. Ltd; Bollard R-1009-40 C40: www.reliance-foundry.com/#sle.
 - b. Substitutions: See Section 01-6000 - Product Requirements.
- B. Bollard Covers: Steel, mounted over existing bollard.
1. Shape: Round.
 2. Diameter: 8 5/8" inches.
 3. Height Above Grade: 42 inches.
 4. Cap: Flat plate.
 5. Factory Finish: 316 Stainless. Satin No. 6, buffed..
 6. Products:
 - a. Reliance Foundry Co. Ltd; Bollard Cover R-7307-EX: www.reliance-foundry.com/#sle.
 - b. Substitutions: See Section 01-6000 - Product Requirements.

2.05 FLAGPOLE:

- A. Manufacturer:
1. American Flagpole; www.americanflagpole.com.
 2. Flagpole Warehouse, www.flagpolewarehouse.com.
 3. Substitutions: See Section 01-6000 - Product Requirements.

B. Products:

1. American Flagpole Coastal Series: CIRW Coastal Internal Reinforced with Winch, Wire Halyard, Gound Set
 - a. Mounting: Ground Set.
 - b. Outside Butt Diameter: 7 inches, verify with wind load.
 - c. Outside Tip Diameter: 3-1/2 inches, verify wind load.
 - d. Nominal Wall Thickness: 0.250 inches, or as required for meeting wind load.
 - e. Nominal Height: 30 ft; measured from nominal ground elevation.
 - f. Halyard: Interior type.
2. Performance Requirements: Flag Size - appropriate for 30 foot pole.
 - a. Flagpole with Flag Flying: Resistant without permanent deformation to 150 miles/hr wind velocity; non-resonant; safety design factor of 2.5.
 - b. Flagpole without Flag: Resistant without permanent deformation to 255 miles/hr wind velocity; non-resonant; safety design factor of 2.5.
3. Pole Materials:
 - a. Aluminum: ASTM B221 (ASTM B221M) 6063 alloy; T6 temper.
4. Operators:
 - a. Stainless Steel Winch Assembly with Removable Hand Crank.
 - b. Flush mount access door with compression lock and key.
5. Mounting Components:
 - a. Foundation Tube Sleeve: Galvanized corrugated steel foundation tube, .0635"-16 Gauge (1.6 mm) minimum wall thickness, sized to suit flagpole and installation. Provide with 3/16" steel bottom plate and steel centering wedges. Foundation tube will consist of all welded construction.
 - b. Pole Base Attachment: Flush; steel base with base cover per manufacturer's recommendation.
 - c. Lightning Ground Rod: 3/16" support plate, 3/4" (19 mm) diameter x 18" long steel ground lightning spike.
6. Accessories:
 - a. Beacon light; 120v, 12v output. LED bulb, revolving 359 degrees.
 - b. Truck Assembly: Cast aluminum; revolving, stainless steel ball bearings, non-fouling.
 - c. Internal Halyard Assembly: stainless steel wire cable halyard; two (2) heavy-duty stainless steel swivel snap hooks, two (2) neoprene snap hook covers; beaded sling assembly; and a plastic coated counterweight.
 - d. Flash Collar: Provide heavy duty, Spun Aluminum Collar. Finish to match flagpole.
7. Finishing:
 - a. Aluminum: Satin Aluminum.

C. Quantity: One.

PART 3 EXECUTION

3.01 EXAMINATION

- A. Verify proper installation of mounting surfaces, preinstalled anchor bolts, and other mounting devices; and ready to receive site furnishing items.
- B. Do not begin installation until unacceptable conditions are corrected.

3.02 INSTALLATION

- A. Install site furnishings in accordance with approved shop drawings, and manufacturer's installation instructions.

- B. See Section 03-3000 for bollard infill and underground encasement.
- C. Conform to ODOT/APWA, Section 00930 of the Standard Specifications for Construction, 20188 Edition.
- D. Provide level mounting surfaces for site furnishing items.

3.03 FLAGPOLE INSTALLATION

- A. Preparation:
 - 1. Excavation for flagpole foundations:
 - a. Excavate to neat clean lines in undisturbed soil.
 - b. Remove loose soil and foreign matter from excavation and moisten earth before placing concrete.
 - 2. Foundation:
 - a. Provide forms where required due to unstable soil conditions and for perimeter of flagpole base at grade.
 - b. Secure forms and galvanized steel ground sleeve foundation tube in position, braced to prevent displacement during concreting. Place concrete immediately after mixing. Compact concrete in place using vibrators.
 - c. Moist-cure exposed concrete for not less than 7 days or use a non-staining curing compound. Trowel exposed concrete surfaces to a smooth, dense finish, free of trowel marks and uniform in texture and appearance. Provide positive slope for water runoff to base perimeter.
 - 3. Verify that concrete foundation is ready to receive work and dimensions are as indicated on shop drawings.
- B. Installation:
 - 1. Install flagpoles where shown and according to shop drawings and manufacturer's written instructions.
 - 2. Install flagpole in foundation tube, seated on bottom plate between steel centering wedges.
 - 3. Plumb flagpole and install hardwood wedges to secure flagpole in place.
 - 4. Place and compact sand in foundation tube to within 2" of the top of tube.
 - 5. Remove hardwood wedges and seal top of foundation tube with a 2-inch (50 mm) layer of elastometric sealant or cement.
 - 6. Cover with flashing collar.
- C. Tolerances:
 - 1. Maximum Variation from Plumb: 1 inch.
- D. Adjusting:
 - 1. Adjust operating devices so that halyard and flag function smoothly.

END OF SECTION

LIGHT FIXTURE SCHEDULE

Table with columns: NAME, MANUFACTURER, DESCRIPTION, TYPE, MOUNTING, FINISH, LAMPS. Includes fixtures like BARTCO WEDGE, LITHONIA WF6 LED, LITHONIA LDN6, LUMINIS SCENA, LITHONIA CPANL, FINELITE, VODE ZIP TWO, LOUIS POULSEN, G-Lighting, DELRAY LIGHTING, EXTANT HUNTINGTON, ACCESS LIGHTING SANDPIPER, BARN LIGHT ELECTRIC, EXTANT HUNTINGTON, LITHONIA ECBR LED, LITHONIA Z SERIES.

LIGHTING CONTROL PANEL - LCP

RELAY	DESCRIPTION	CIRCUIT	CONTROL PROGRAM
1	BUILDING EXTERIOR	L1-40	PHOTO CELL ON/OFF
2	BUILDING SIGNAGE -EAST	L1-36	PHOTO CELL ON/OFF
3	BUILDING SIGNAGE -NORTH	L1-38	PHOTO CELL ON/OFF
4	STAIRS & ENTRIES	L2-30	MANUAL
5	STACKS A	L2-36	MANUAL ON / TIMER OFF
6	STACKS B	L2-38	MANUAL ON / TIMER OFF
7	PENDANTS	L2-30	MANUAL ON / TIMER OFF
8	VAULT / TEEN / COMP	L2-28	MANUAL

KEYED NOTES
1 PROVIDE LOCK-OUT BREAKER FOR ALL PERMANENTLY CONNECTED APPLIANCES OVER 300 VA

1ST FLOOR LIGHTING PANEL

PANEL 'L1' 120 / 208 VOLTS 3-PHASE, 4-WIRE

PL	T	LOAD	VA	HP	PHW	GND	CDN	BKR	PH	BKR	CDN	GND	PHW	HP	VA	LOAD	T	PL	
1	R	DATA RACK	180		12	12	1/2	20	1	A	1	20	1/2	12	12	360	REC. PC STATIONS	R	2

2ND FLR LIGHTING PANEL

PANEL 'L2' 120 / 208 VOLTS 3-PHASE, 4-WIRE

PL	T	LOAD	VA	HP	PHW	GND	CDN	BKR	PH	BKR	CDN	GND	PHW	HP	VA	LOAD	T	PL	
1	H	RANGE	4000		8	10	3/4	50	2	A	1	20	1/2	12	12	90	REC. CIRC. PUMP	R	2

MECHANICAL

PANEL 'M' 400 AMP 120 / 208 VOLTS 3-PHASE, 4-WIRE

PL	T	LOAD	VA	HP	PHW	GND	CDN	BKR	PH	BKR	CDN	GND	PHW	HP	VA	LOAD	T	PL	
1	M	RTU - 1	2303		10	10	3/4	30	3	A	3	20	1/2	12	12	470	POWER EXHAUST 1	M	2

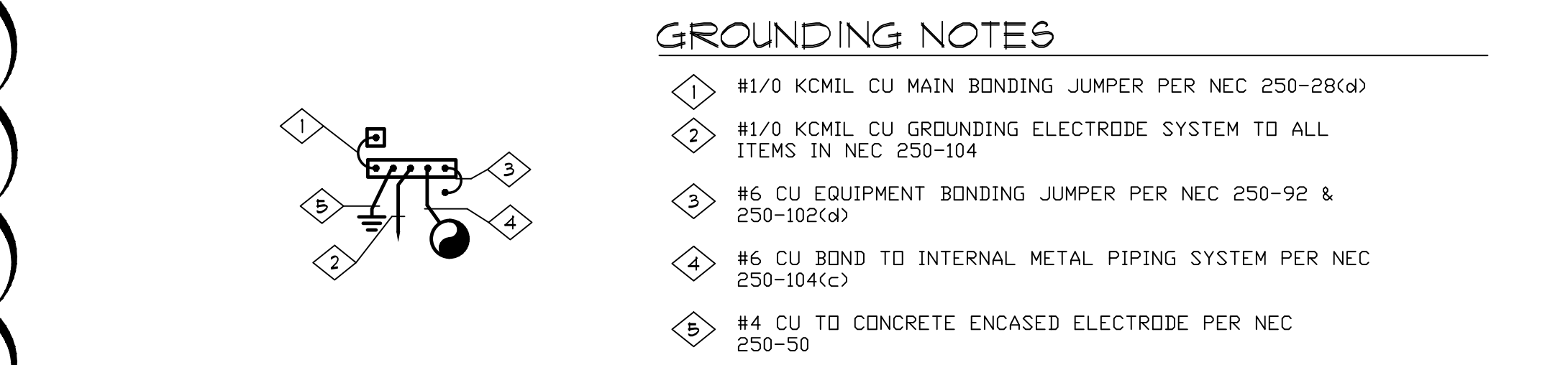
FEEDER SCHEDULE

200A	3" C, 4 #300 AL PH, #4 AL GRD
400A	2 SETS - 3" C, 4 #300 AL PH, #1/0 AL GRD
600A	3 SETS - 3" C, 4 #300 AL PH, #2/0 AL GRD
600U	2 SETS - 4" C - VERIFY ALL REQUIREMENTS WITH UTILITY

MECHANICAL EQUIPMENT SCHEDULE

ID	DESCRIPTION	LOCATION	HP/KVA	MCA	MCCP	VOLTS	PH	DISCONNECT	SWITCH	NOTE
AHU - 1	AIR HANDLING UNIT	UTILITY 22		31.2	35	208	1	30/2	X	3.8 KW HEATER
RTU - 1	ROOF TOP UNIT	ROOF	24	30	208	3	30/3		X	

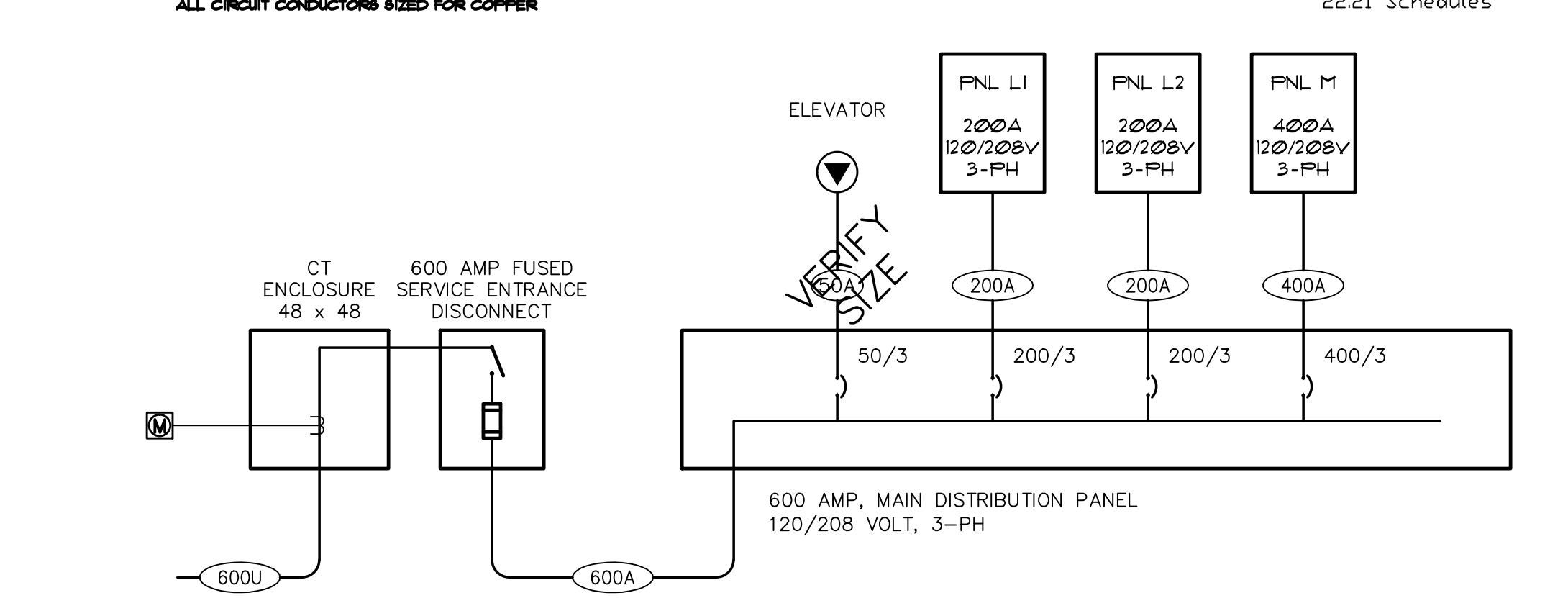
KEYED NOTES
1 MOTOR RATED SWITCH.
2 VERIFY ALL REQUIREMENTS WITH ELEVATOR MANUFACTURER. PROVIDE MINIMUM OF 2" CONDUIT FOR POWER. BASIS OF DESIGN IS FOR A 20 HP ELEVATOR WITH 65.1 FLA BUT THIS IS LIKELY TO CHANGE.



PANEL 'MDP'

600 AMP 120 / 208 VOLTS 3-PHASE, 4-WIRE

PL	T	LOAD	VA	HP	PHW	GND	CDN	BKR	PH	BKR	CDN	GND	PHW	HP	VA	LOAD	T	PL		
1	P	PANEL L1	6347						200	3	A	3	400		19258			PANEL M	P	2



1 1-LINE DIAGRAM
E1.1 120/208 VOLT, 3-PHASE

HGE ARCHITECTS.
333 S. 4TH STREET
COOS BAY, OR 97420
P: 541.269.1166
www.hge1.com
general@hge1.com

DOUBLE 'E' ENGINEERING, LLC
Myrtle Point, Oregon
www.eengineering.com

REGISTERED PROFESSIONAL ENGINEER
65580
Gregory L. Priebe
JULY 13, 2004
EXPIRES 12-31-24

PROJECT NO.: 2237
COQUILLE PUBLIC LIBRARY RENOVATION
259 NORTH ADAMS STREET
COQUILLE, OREGON 97423

REVISIONS:
DATE DESCRIPTION
1 8/4/23 ADDENDUM 1

DATE: JULY 2022

SHEET TITLE: ELECTRICAL SCHEDULES

E1.1

Copyright © 2021 HGE ARCHITECTS, INC.

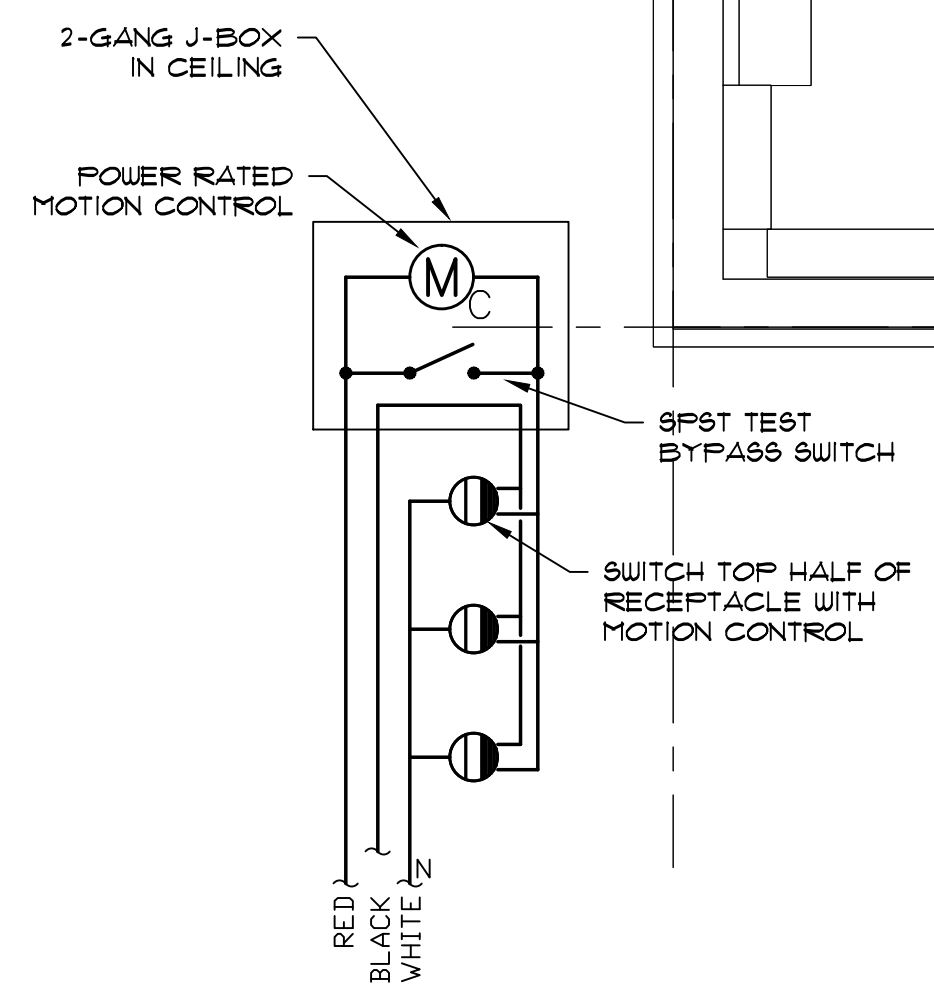
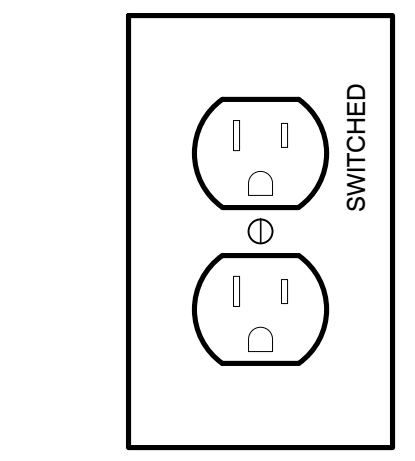
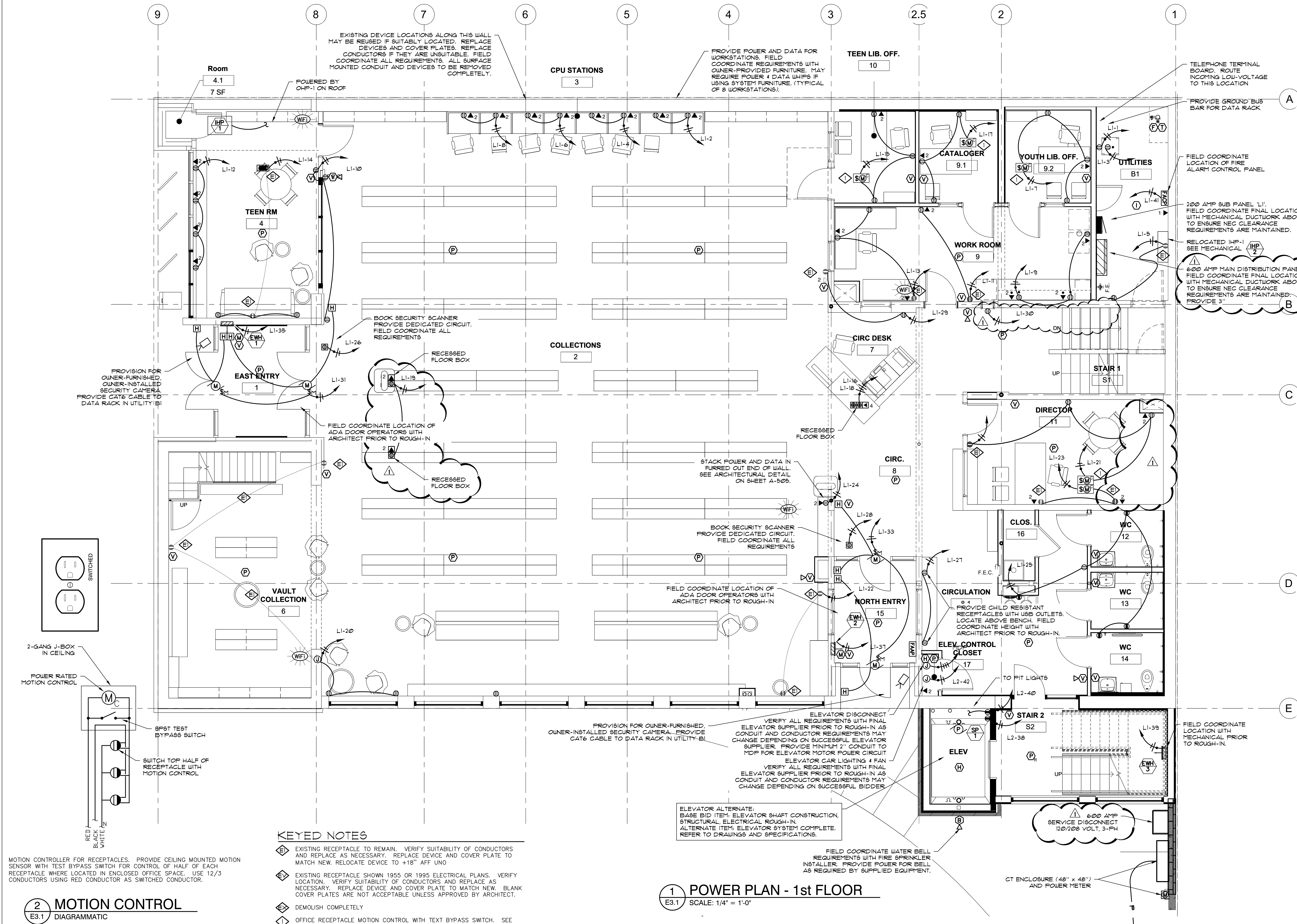
CONSTRUCTION

REVISIONS:	#	DATE	DESCRIPTION
	1	8/4/23	ADDENDUM 1

DATE: JULY 2022
SHEET TITLE:

1st FLOOR
POWER PLAN

E3.1



MOTION CONTROLLER FOR RECEPTACLES. PROVIDE CEILING MOUNTED MOTION SENSOR WITH TEST BYPASS SWITCH FOR CONTROL OF HALF OF EACH RECEPTACLE WHERE LOCATED IN ENCLOSED OFFICE SPACE. USE 12/3 CONDUCTORS USING RED CONDUCTOR AS SWITCHED CONDUCTOR.

2 MOTION CONTROL
E3.1 DIAGRAMMATIC