

**ADDENDUM #1 – APRIL 5, 2023**

**RE: COQUILLE HIGH SCHOOL  
CTE Shop Renovation  
Project #21.03**

**FROM: HGE ARCHITECTS, Inc.  
333 South 4<sup>th</sup> Street  
Coos Bay, Oregon 97420  
541-269-1166**



**TO: Prospective Bidders**

This Addendum forms a part of the Contract Documents and modifies the original Documents dated March 2023, as noted below. Acknowledge receipt of this Addendum in the space provided on the Bid Form. Failure to do so may subject Bidder to disqualification.

This Addendum consists of **ONE (1)** page(s) together with the following attachments:

- **Sheet E1 Electrical Panel Schedules**
- **Sheet E2 Electrical Plans Demolition**
- **Sheet E3 Electrical Plans Power & Data**
- **Sheet E4 Electrical Plans Lighting**

**CHANGES TO PROJECT MANUAL: None.**

**CHANGES TO DRAWINGS:**

1. **ADD Sheet E1 Electrical Panel Schedules**
2. **ADD Sheet E2 Electrical Plans Demolition**
3. **ADD Sheet E3 Electrical Plans Power & Data**
4. **ADD Sheet E4 Electrical Plans Lighting**
5. **NOTE:** Mechanical, Plumbing, and Fire System drawings were added to available Drawings set April 3, 2023. Drawing set including this addendum has been updated on Architect's website at [www.hge1.com/bidding-area](http://www.hge1.com/bidding-area).

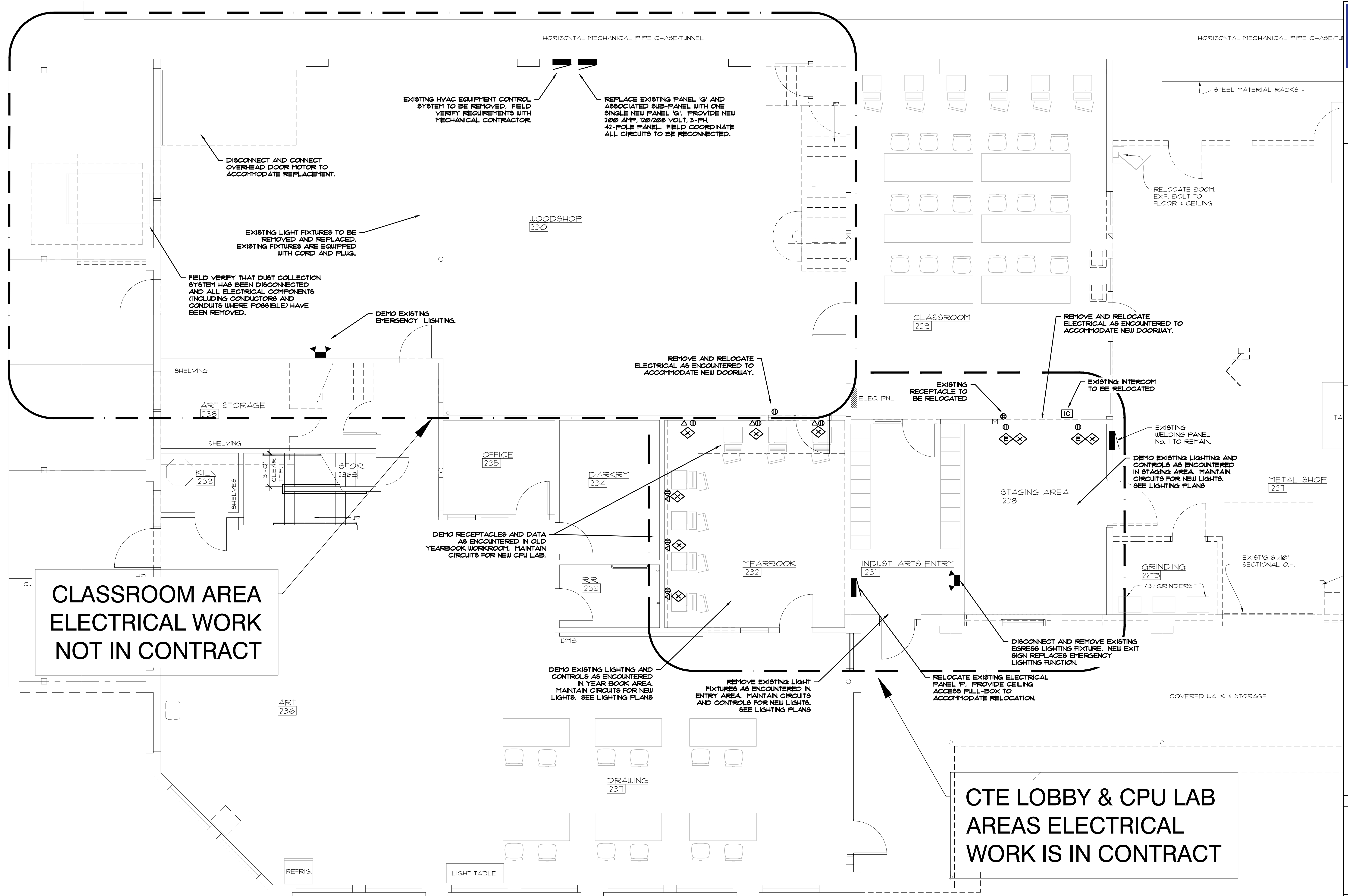
**SUBSTITUTION APPROVALS: None.**

<u>SPECIFIED SECTION</u>	<u>SPECIFIED ITEM</u>	<u>APPROVED</u>

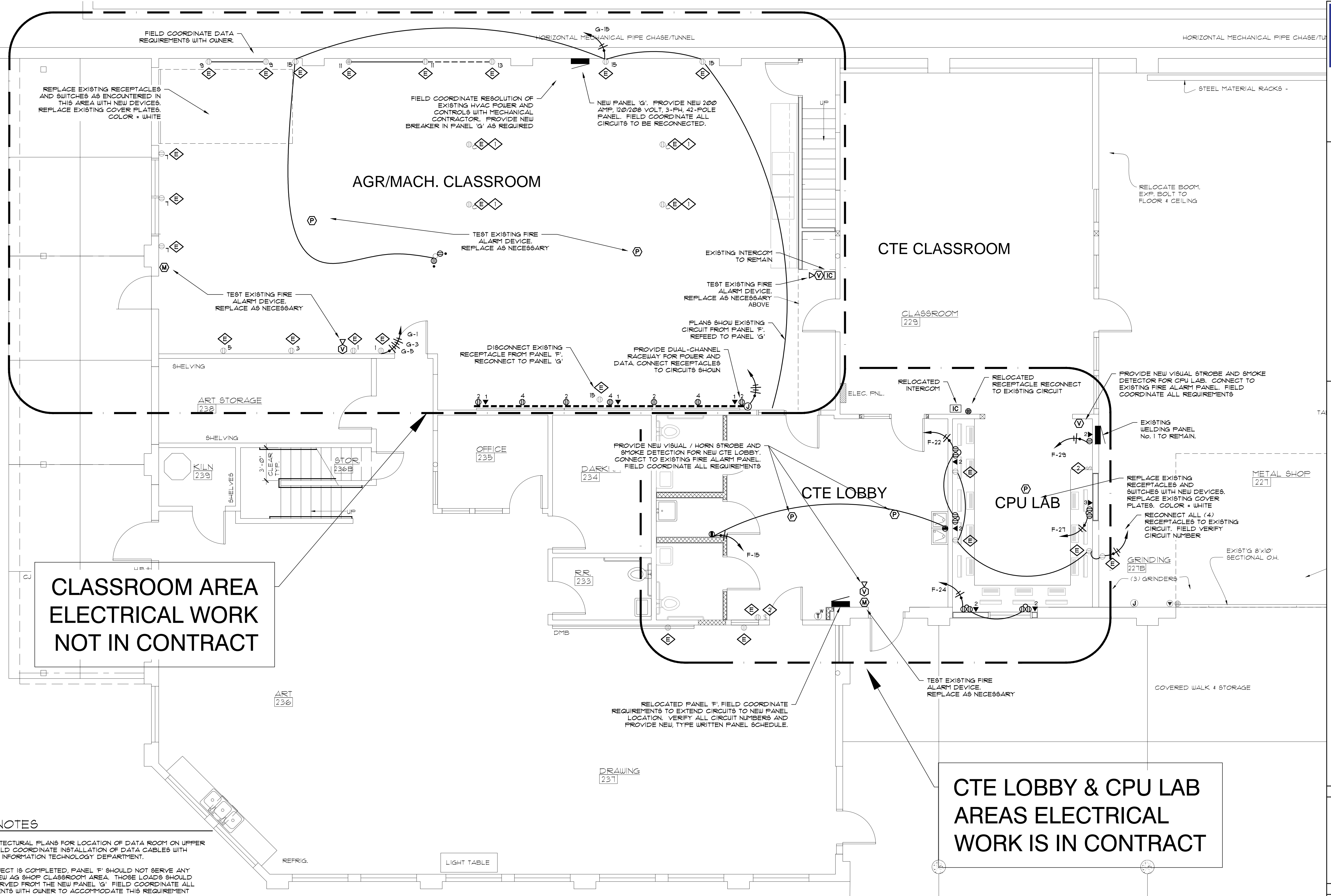
**END OF ADDENDUM #1**



#	DATE	DESCRIPTION



**1** ELECTRICAL PLANS - DEMOLITION  
E2 SCALE: 1/4" = 1'-0"



**CLASSROOM AREA  
ELECTRICAL WORK  
NOT IN CONTRACT**

**CTE LOBBY & CPU LAB  
AREAS ELECTRICAL  
WORK IS IN CONTRACT**

**SHEET NOTES**

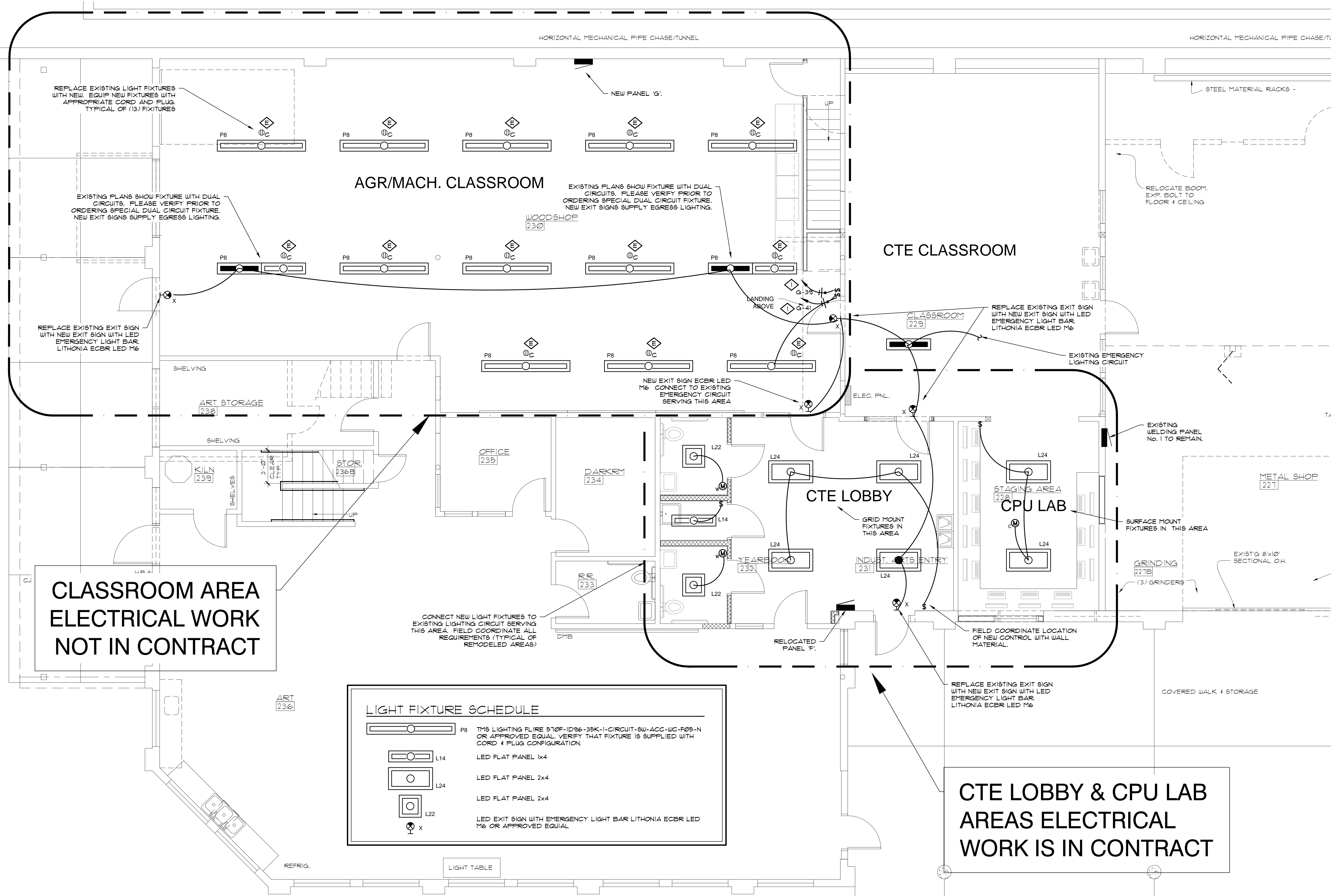
- SEE ARCHITECTURAL PLANS FOR LOCATION OF DATA ROOM ON UPPER LEVEL. FIELD COORDINATE INSTALLATION OF DATA CABLES WITH DISTRICT'S INFORMATION TECHNOLOGY DEPARTMENT.
- WHEN PROJECT IS COMPLETED, PANEL 'F' SHOULD NOT SERVE ANY LOAD IN NEW AG SHOP CLASSROOM AREA. THOSE LOADS SHOULD ALL BE SERVED FROM THE NEW PANEL 'G'. FIELD COORDINATE ALL REQUIREMENTS WITH OWNER TO ACCOMMODATE THIS REQUIREMENT

**KEYED NOTES**

- ⓔ EXISTING DEVICE TO REMAIN.
- Ⓛ PROVIDE CORD REEL AT (4) EXISTING CEILING RECEPTACLES
- Ⓜ REMOVE DEVICE AND PROVIDE BLANK COVER FOR EXISTING DEVICE.
- Ⓝ EXISTING INTERCOM TO BE REMOVED. PROVIDE BLANK COVER PLATE.

**1** ELECTRICAL PLANS - POWER & DATA  
E3 SCALE: 1/4" = 1'-0"

REVISIONS:	#	DATE	DESCRIPTION



**CLASSROOM AREA  
ELECTRICAL WORK  
NOT IN CONTRACT**

**CTE LOBBY & CPU LAB  
AREAS ELECTRICAL  
WORK IS IN CONTRACT**

LIGHT FIXTURE SCHEDULE	
	P8 THIS LIGHTING FIXTURE IS 510F-ID36-35K-1-CIRCUIT-SW-ACC-UC-F05-N OR APPROVED EQUAL. VERIFY THAT FIXTURE IS SUPPLIED WITH CORD & PLUG CONFIGURATION.
	L14 LED FLAT PANEL 1x4
	L24 LED FLAT PANEL 2x4
	L24 LED FLAT PANEL 2x4
	L22 LED EXIT SIGN WITH EMERGENCY LIGHT BAR LITHONIA ECBR LED M6 OR APPROVED EQUAL

**KEYED NOTES**

- EXISTING DEVICE TO REMAIN.
  - LIGHTS - DISCONNECT FROM PANEL 'F' AND RECONNECT LIGHT PLUGS TO PANEL 'G' - SEE SWITCHES FOR CIRCUIT NUMBERS. PROVIDE (13) NEW 8-FOOT LIGHT SUSPENDED FIXTURES WITH CORD AND PLUG. TWO FIXTURES REQUIRE DUAL CIRCUITS (DC OPTION) WITH BATTERY PACKS.
- FINELITE SERIES 12 9/2 LED ID - DCO - 8' - 4E - B - 835 - 20UB0D - 120V - SC - FA - FE - C4 - OBO - OR APPROVED EQUAL.

**1 ELECTRICAL PLANS - LIGHTING**  
E4 SCALE: 1/4" = 1'-0"